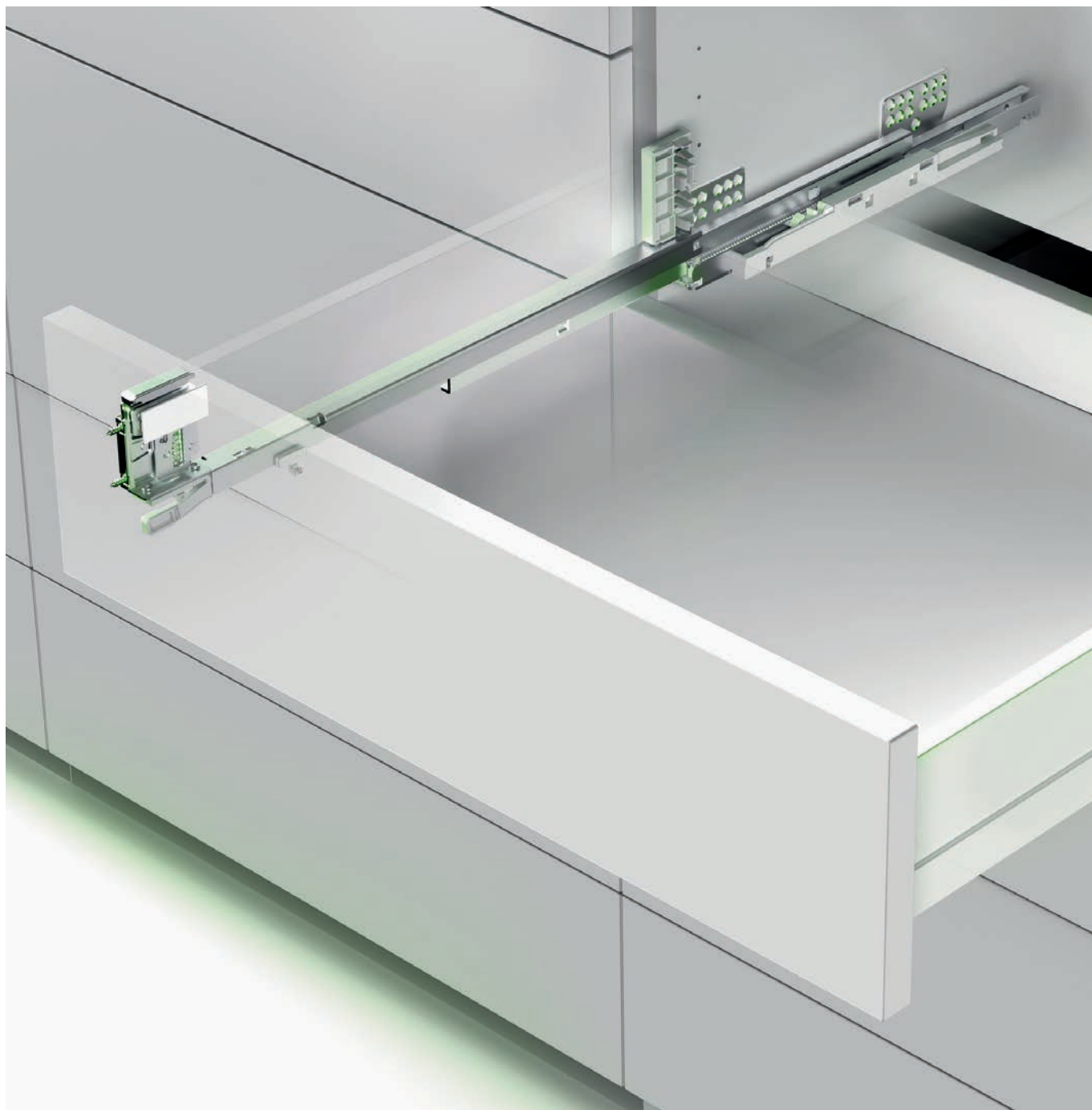


Ten²



***A drawer
evolution***



**FORMENTI &
GIOVENZANA**



Gieffe



FGV Slovakia, Spol s r.o.



FGVTN Brasil LTDA.



FGV Dongguan

Great Numbers, Great Value

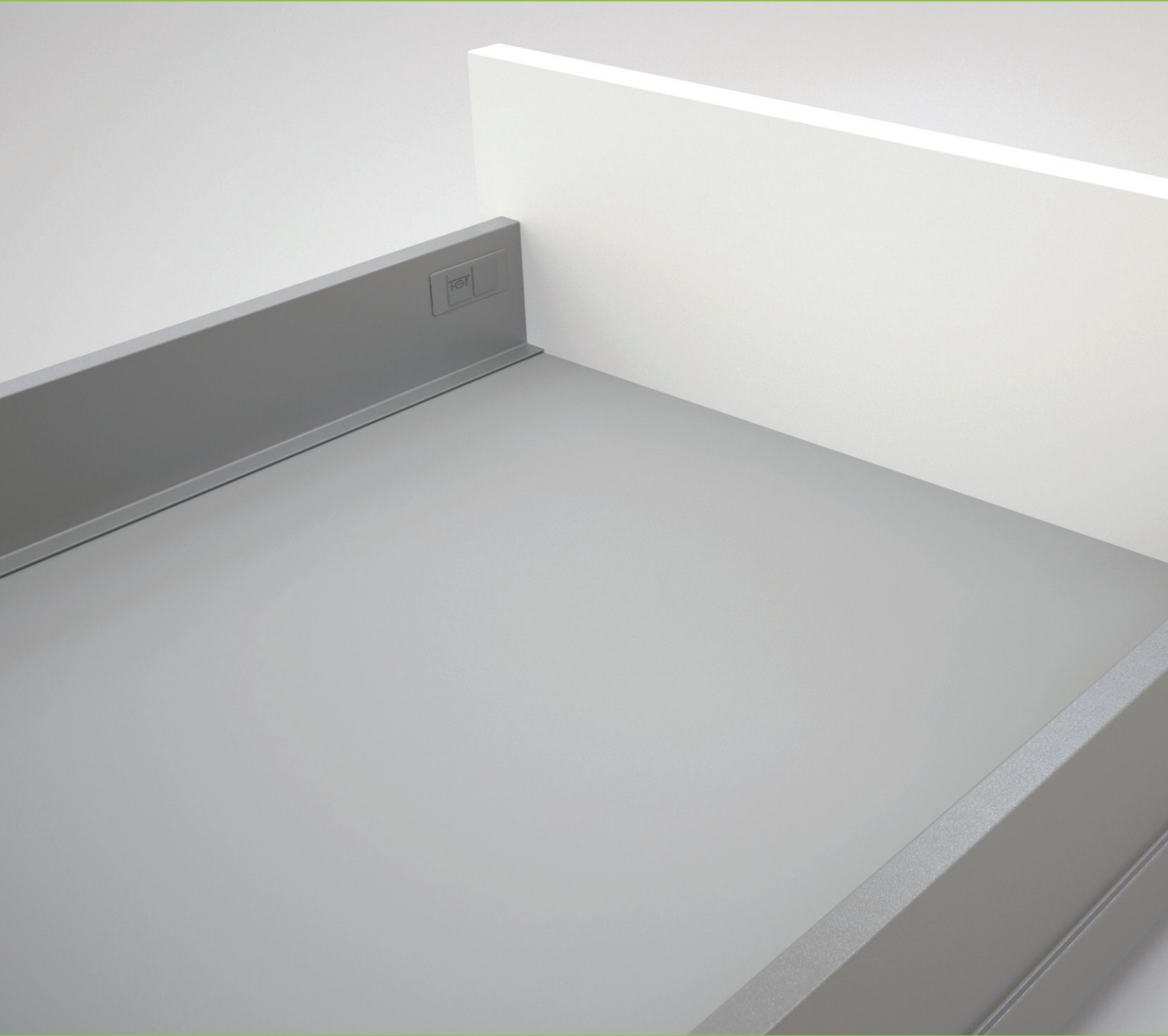


FGV is the leading Italian manufacturer of furniture hardware and components. Since 1947 the company develops, produces and sells worldwide clever solutions for the furniture and kitchen industry at the right price. Over the years MADE IN FGV has become synonymous of Italian design combined with mass volume economies of scale. True to its slogan “Great Numbers, Great Value”, FGV offers to the market the right products in the right quality at the right price. With 4 production plants in Italy, Slovakia, Brazil and China working with the same quality standards, FGV has the tools to propose affordable solutions with the latest technologies. Using state-of-the-art and cost efficient technology, FGV delivers a product portfolio which covers the needs of the industry. The FGV sales network of own subsidiaries is completed by a very performing net of strategic distributors to deliver modern furniture technology in every part of the world. Investing constantly in Customer service and new logistics solutions, FGV aim to help the furniture and kitchen industry to deliver an improved experience to the end-consumer when these buying and using furniture or kitchen cabinets.



Formenti & Giovenzana S.p.A.







A drawer evolution

Elegant and extra slim shape

Brilliant and trendy colours

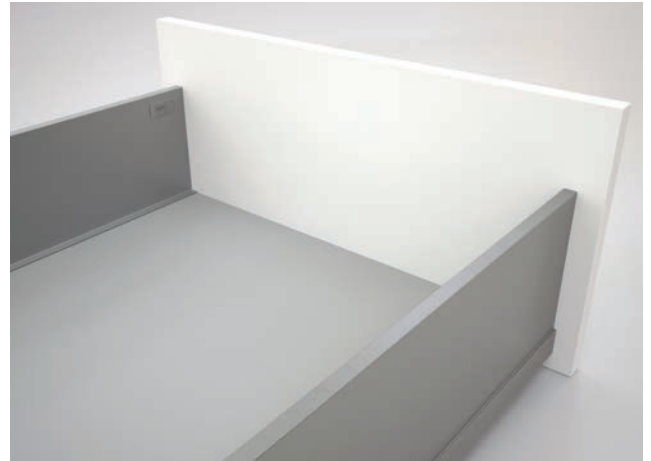
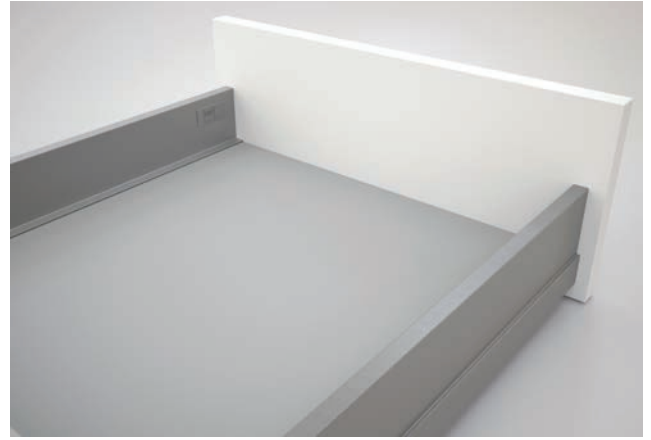
Motion at its best

OneTouch+SlowMotion technology

Ten² is the new high quality and high performance double wall drawer technology with extra slim shape. Ten² is a complete range covering all usual applications with clever solutions, Italian design and elegance. Ten² stands for fulfilment of the highest criteria where every detail counts. Ten² is a synonym of state-of-the-art conception, use of environmental friendly materials and production solutions.

Elegant and extra slim shape

The Ten² drawer system is characterized by a very slim shape and an enriched superior design. Three different heights allow to create elegant drawer and pan drawer solutions and maximizing storage space without railing application.



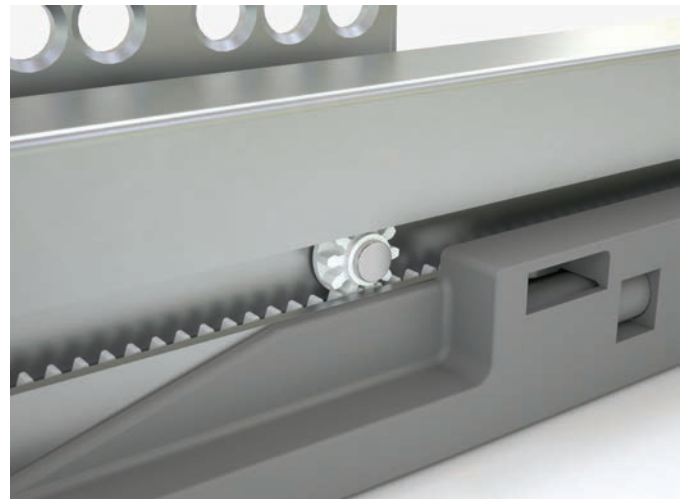
Brilliant and trendy colours

The Ten² drawer is available in a full range of colours; from standard White and Grey to innovative Storm Grey and Coffee Black to create drawers with modern look and matching perfectly with wood and current design trends. The final result is an elegant and high end furniture appeal.



Motion at its best

Further improvements on the already tested and reliable Ten slides guarantee better performance according to soft sliding movement and high stability. The full extension sliding system with a load capacity of 45kg throughout the range, is equipped with Dual-Synchro stabilisation for noiseless and a new powerful SlowMotion damper for perfect operation and long lasting function.



OneTouch + SlowMotion technology

Never so easy to open and close a drawer with the new OneTouch+SlowMotion System. A completely hidden mechanism that ensures, with a gentle press on the front, a perfect and silent opening and closing. Depth adjustment on both sides guarantees precise front gap regulation. Easy to install, no cables or electricity required.





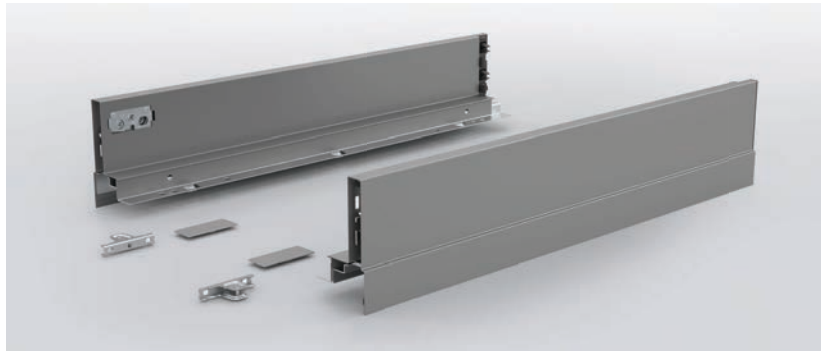


Ten² Index

<i>Drawer H90</i>	<i>10-11</i>
<i>Drawer H120</i>	<i>12-13</i>
<i>Drawer H180</i>	<i>14-15</i>
<i>Slides</i>	<i>16-17</i>
<i>OneTouch+SlowMotion technology</i>	<i>18-19</i>
<i>Steel back panels</i>	<i>20-21</i>
<i>Back fixings for wooden back panel</i>	<i>22-23</i>
<i>Rectangular railing system</i>	<i>24-25</i>
<i>Back fixing brackets for rectangular railing</i>	<i>26-27</i>
<i>IN internal drawer – crystal front</i>	<i>28-29</i>
<i>IN internal drawer – aluminium front</i>	<i>30-31</i>
<i>Stabilizer kit</i>	<i>32-33</i>
<i>Acquario undersink solution</i>	<i>34-35</i>
<i>Standard drawer kit</i>	<i>36-37</i>
<i>Instructions for use</i>	<i>38-44</i>



Drawer H90



Double wall steel drawer height 90mm, epoxy finish, with strong design features and state-of-the-art technology

Benefits for the industry

- Large range of depth from 270 to 550 mm
- All steel front fixing mechanism for strong and secure fixing
- Vertical and horizontal adjustment in the front fixing mechanism
- Bottom fixing via ClawFix or screws without processing on the panel
- Bottom panel and back panel with identical width
- Decorative cover cap with possibility of customisation

Benefits for the consumer

- Four metal finishes: Coffee Black and Storm Grey for high end look and perfect match for wooden and modern finishes, standard Grey and Polar White for a linear and clean look
- Optimised inner space thanks to straight outer and inner faces
- Easy to clean thanks to hygienic bottom lip and clean adjustment of every connection
- GreenSilver® technology for low carbon footprint production process and 100% recycle ability for reduced ecological impact

Code	Description	Packing
58.Y0A0.**.27.00010	Left and right drawer side 270	Industrial
58.Y0A0.**.30.00010	Left and right drawer side 300	Industrial
58.Y0A0.**.35.00010	Left and right drawer side 350	Industrial
58.Y0A0.**.40.00010	Left and right drawer side 400	Industrial
58.Y0A0.**.45.00010	Left and right drawer side 450	Industrial
58.Y0A0.**.50.00010	Left and right drawer side 500	Industrial
58.Y0A0.**.55.00010	Left and right drawer side 550	Industrial
<i>** colour codes: N2 = Coffee Black / S8 = Storm Grey / A6 = standard Grey / F1 = Polar White. Industrial packing composed by: 1 box with 10 right sides and 1 box with 10 left sides.</i>		
58.YM00.**.0000.000	Cover cap with FGV logo	1000 pcs
58.YM00.**.0000.00N	Cover cap without logo	1000 pcs
<i>** plastic colour codes: N2 = Coffee Black / S8 = Storm Grey / A6 = standard Grey / F1 = Polar White. It is possible to order embossed or silk-screen printing cover cap.</i>		
58.AY10.07.0000.000	Front brackets for self-tapping screws	200 pcs
58.AY20.07.0000.000	Front brackets with 10mm knock-in dowels	200 pcs
58.AY30.07.0000.000	Front brackets with 10mm expanding dowels	200 pcs
58.AY40.07.0000.000	Front brackets for self-tapping screws – Special pattern	200 pcs



Front brackets for self-tapping screws

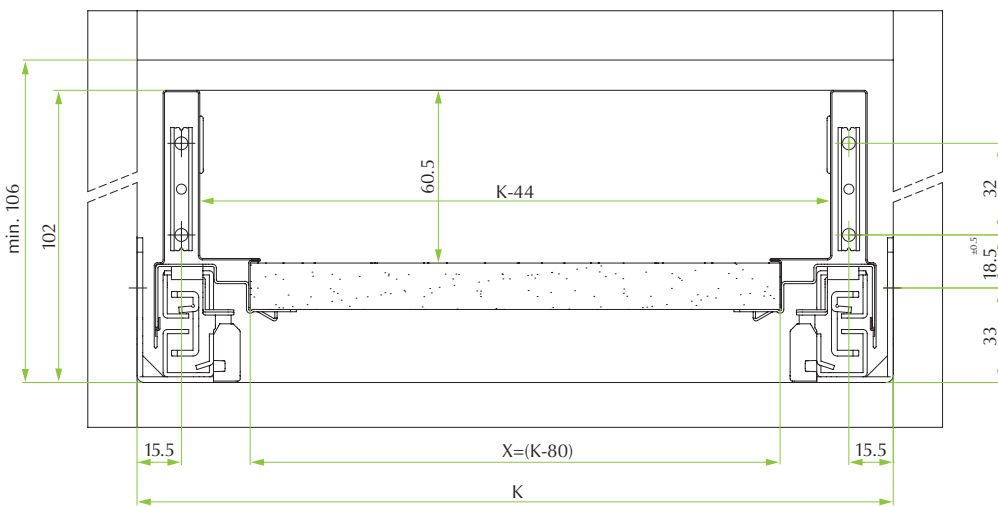


Front brackets with 10mm knock-in dowels

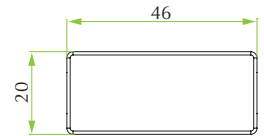


Front brackets with 10mm expanding dowels

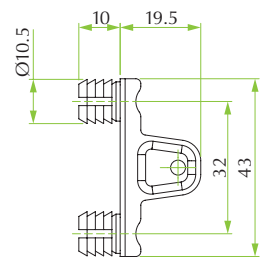
Front drilling & dimensions



Cover cap



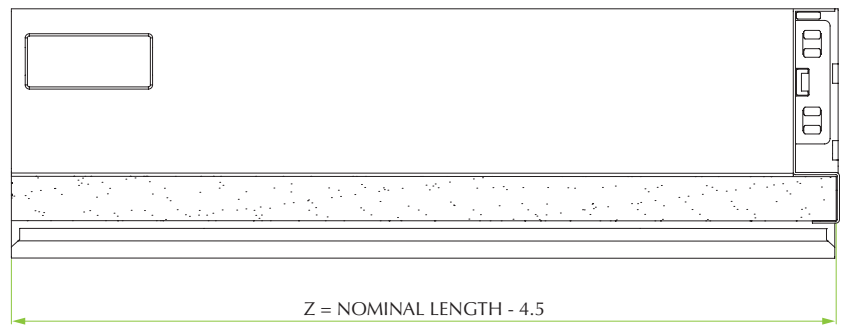
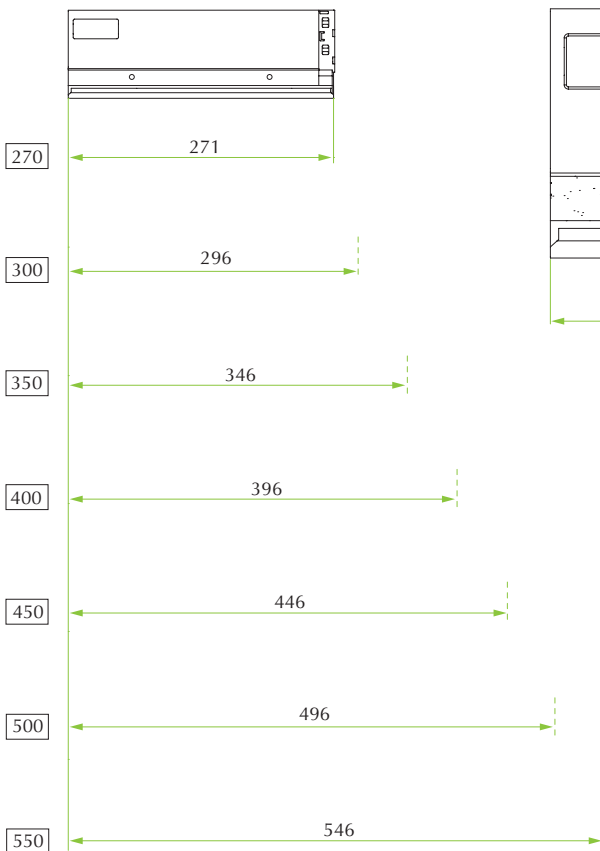
Front bracket with 10mm dowels



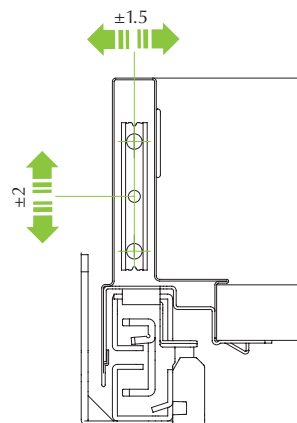
X = BOTTOM PANEL WIDTH

K = INTERNAL CABINET WIDTH

Z = BOTTOM PANEL LENGTH

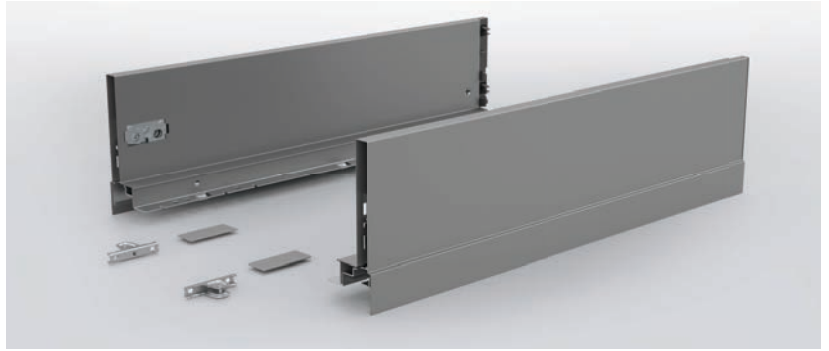


Adjustments





Drawer H120



Double wall steel drawer height 120mm, epoxy finish, with strong design features and state-of-the-art technology

Benefits for the industry

- Large range of depth from 270 to 550 mm
- All steel front fixing mechanism for strong and secure fixing
- Vertical and horizontal adjustment in the front fixing mechanism
- Bottom fixing via ClawFix or screws without processing on the panel
- Bottom panel and back panel with identical width
- Decorative cover cap with possibility of customisation

Benefits for the consumer

- Four metal finishes: Coffee Black and Storm Grey for high end look and perfect match for wooden and modern finishes, standard Grey and Polar White for a linear and clean look
- Optimised inner space thanks to straight outer and inner faces
- Easy to clean thanks to hygienic bottom lip and clean adjustment of every connection
- GreenSilver® technology for low carbon footprint production process and 100% recycle ability for reduced ecological impact

Code	Description	Packing
58.Y0B0.**.27.00010	Left and right drawer side 270	Industrial
58.Y0B0.**.30.00010	Left and right drawer side 300	Industrial
58.Y0B0.**.35.00010	Left and right drawer side 350	Industrial
58.Y0B0.**.40.00010	Left and right drawer side 400	Industrial
58.Y0B0.**.45.00010	Left and right drawer side 450	Industrial
58.Y0B0.**.50.00010	Left and right drawer side 500	Industrial
58.Y0B0.**.55.00010	Left and right drawer side 550	Industrial
<i>** colour codes: N2 = Coffee Black / S8 = Storm Grey / A6 = standard Grey / F1 = Polar White. Industrial packing composed by: 1 box with 10 right sides and 1 box with 10 left sides.</i>		
58.YM00.**.0000.000	Cover cap with FGV logo	1000 pcs
58.YM00.**.0000.00N	Cover cap without logo	1000 pcs
<i>** plastic colour codes: N2 = Coffee Black / S8 = Storm Grey / A6 = standard Grey / F1 = Polar White. It is possible to order embossed or silk-screen printing cover cap.</i>		
58.AY10.07.0000.000	Front brackets for self-tapping screws	200 pcs
58.AY20.07.0000.000	Front brackets with 10mm knock-in dowels	200 pcs
58.AY30.07.0000.000	Front brackets with 10mm expanding dowels	200 pcs
58.AY40.07.0000.000	Front brackets for self-tapping screws – Special pattern	200 pcs



Front brackets for self-tapping screws

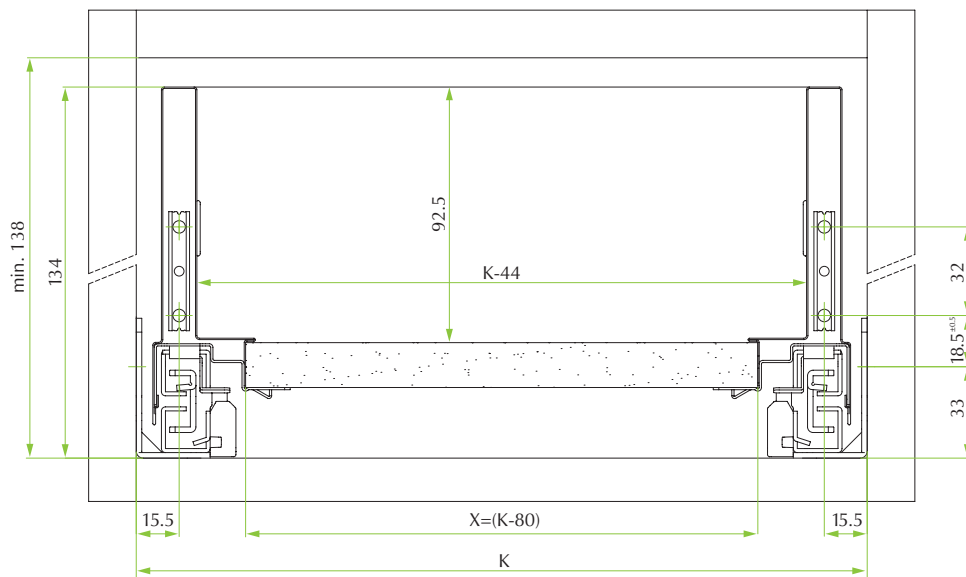


Front brackets with 10mm knock-in dowels

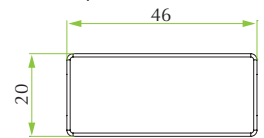


Front brackets with 10mm expanding dowels

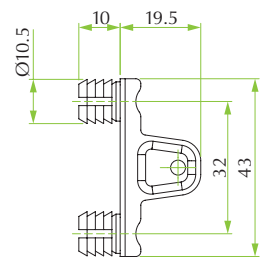
Front drilling & dimensions



Cover cap



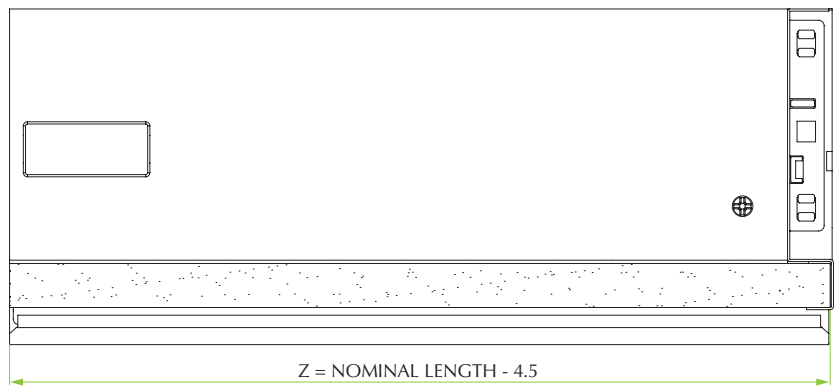
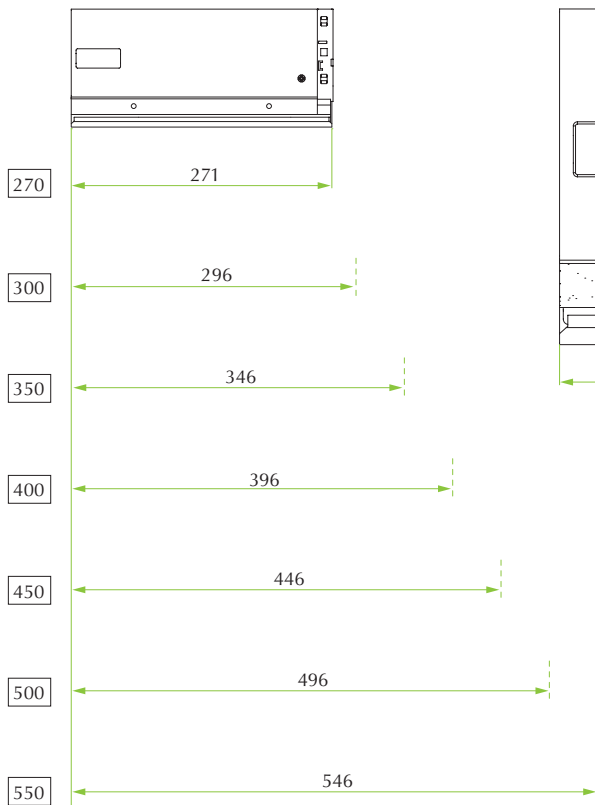
Front bracket with 10mm dowels



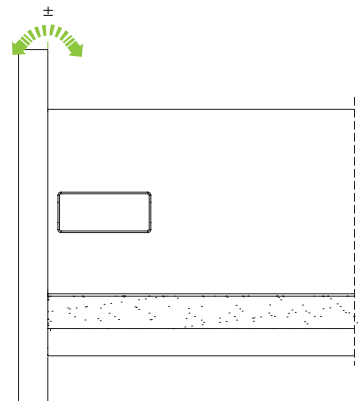
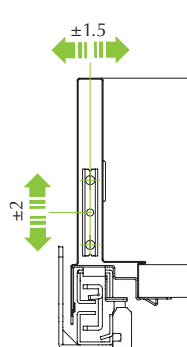
X = BOTTOM PANEL WIDTH

K = INTERNAL CABINET WIDTH

Z = BOTTOM PANEL LENGTH

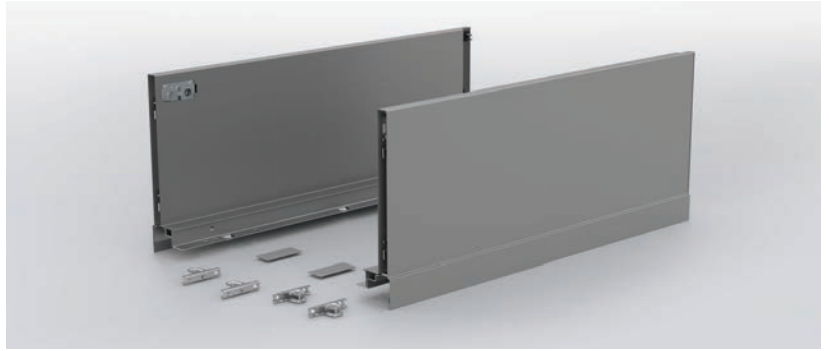


Adjustments





Drawer H180



Double wall steel drawer height 180mm, epoxy finish, with strong design features and state-of-the-art technology

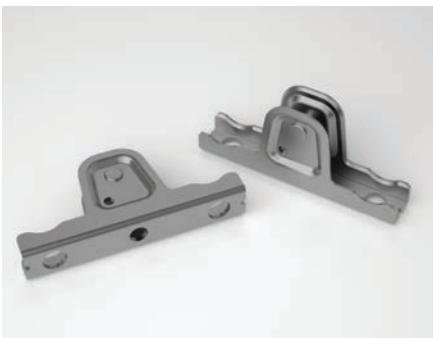
Benefits for the industry

- Large range of depth from 270 to 550 mm
- All steel front fixing mechanism for strong and secure fixing
- Vertical and horizontal adjustment in the front fixing mechanism
- Bottom fixing via ClawFix or screws without processing on the panel
- Bottom panel and back panel with identical width
- Decorative cover cap with possibility of customisation

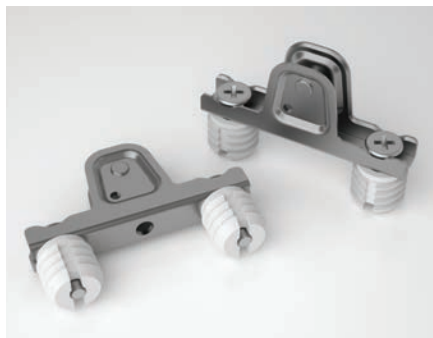
Benefits for the consumer

- Four metal finishes: Coffee Black and Storm Grey for high end look and perfect match for wooden and modern finishes, standard Grey and Polar White for a linear and clean look
- Optimised inner space thanks to straight outer and inner faces
- Easy to clean thanks to hygienic bottom lip and clean adjustment of every connection
- GreenSilver® technology for low carbon footprint production process and 100% recycle ability for reduced ecological impact

Code	Description	Packing
58.Y0S0.**.27.00010	Left and right drawer side 270	Industrial
58.Y0S0.**.30.00010	Left and right drawer side 300	Industrial
58.Y0S0.**.35.00010	Left and right drawer side 350	Industrial
58.Y0S0.**.40.00010	Left and right drawer side 400	Industrial
58.Y0S0.**.45.00010	Left and right drawer side 450	Industrial
58.Y0S0.**.50.00010	Left and right drawer side 500	Industrial
58.Y0S0.**.55.00010	Left and right drawer side 550	Industrial
<i>** colour codes: N2 = Coffee Black / S8 = Storm Grey / A6 = standard Grey / F1 = Polar White. Industrial packing composed by: 1 box with 10 right sides and 1 box with 10 left sides.</i>		
58.YM00.**.0000.000	Cover cap with FGV logo	1000 pcs
58.YM00.**.0000.00N	Cover cap without logo	1000 pcs
<i>** plastic colour codes: N2 = Coffee Black / S8 = Storm Grey / A6 = standard Grey / F1 = Polar White. It is possible to order embossed or silk-screen printing cover cap.</i>		
58.AY10.07.0000.000	Front brackets for self-tapping screws	200 pcs
58.AY20.07.0000.000	Front brackets with 10mm knock-in dowels	200 pcs
58.AY30.07.0000.000	Front brackets with 10mm expanding dowels	200 pcs
58.AY40.07.0000.000	Front brackets for self-tapping screws – Special pattern	200 pcs



Front brackets for self-tapping screws

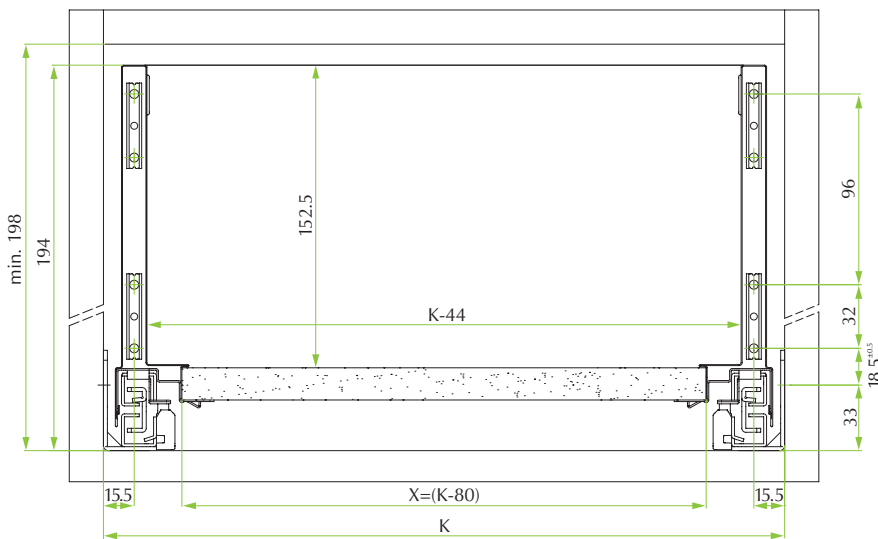


Front brackets with 10mm knock-in dowels

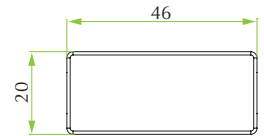


Front brackets with 10mm expanding dowels

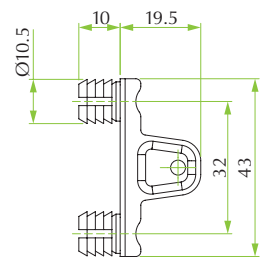
Front drilling & dimensions



Cover cap



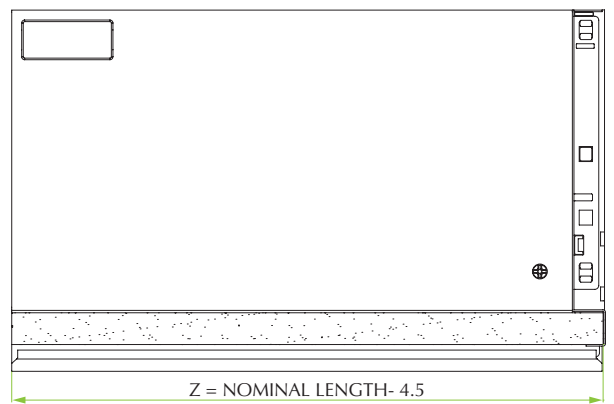
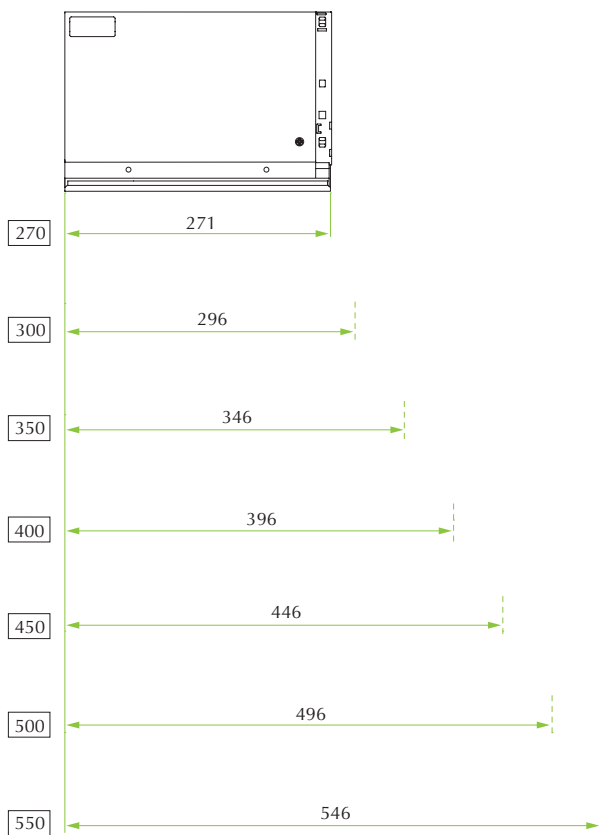
Front bracket with 10mm dowels



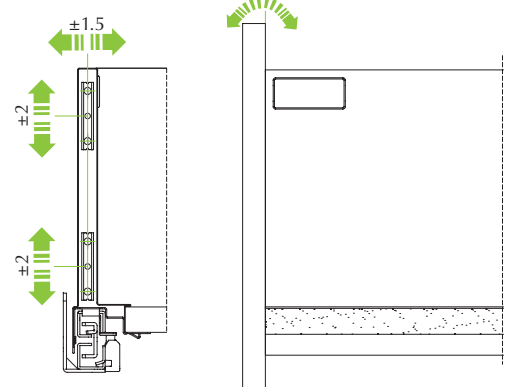
X = BOTTOM PANEL WIDTH

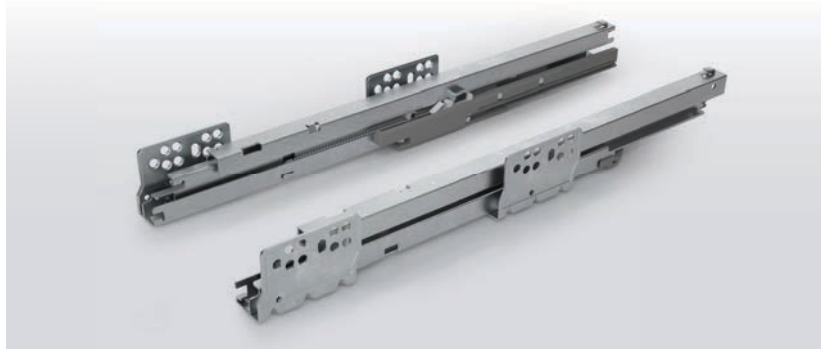
K = INTERNAL CABINET WIDTH

Z = BOTTOM PANEL LENGTH



Adjustments





Full extension damped slides, zink finish, for high performance and smooth action

Benefits for the industry

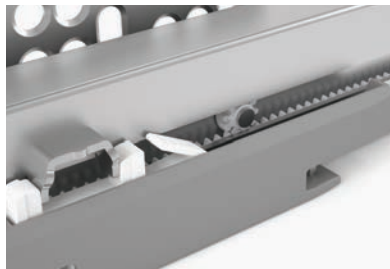
- Large range of length from 270 to 550 mm
- High 45kg standard load for ease of use throughout the applications
- High side stability thanks to Dual-Synchro® rack-and-pinion for smooth action
- New generation SlowMotion® damping with long damping way for guaranteed drawer closure under adverse conditions
- Very stiff construction for low drop under load
- Slide-click fixing of drawer on the slide for easy and safe connection

Benefits for the consumer

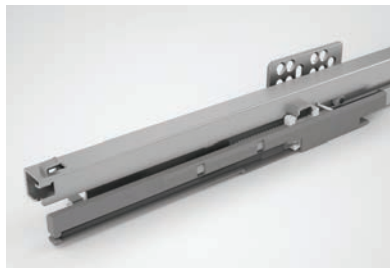
- Very smooth action and increased glide ability thanks to rollers with special design and materials
- Adaptive SlowMotion® damping for silent and majestic closing under all load circumstances
- Long lasting life thanks to high quality material and performance design

Code	Description	Packing
58.YEF0.07.27.X0000	Left and right drawer slide 270 (1 pair)	Industrial
58.YEF0.07.30.X0000	Left and right drawer slide 300 (1 pair)	Industrial
58.YEF0.07.35.X0000	Left and right drawer slide 350 (1 pair)	Industrial
58.YEF0.07.40.X0000	Left and right drawer slide 400 (1 pair)	Industrial
58.YEF0.07.45.X0000	Left and right drawer slide 450 (1 pair)	Industrial
58.YEF0.07.50.X0000	Left and right drawer slide 500 (1 pair)	Industrial
58.YEF0.07.55.X0000	Left and right drawer slide 550 (1 pair)	Industrial

Industrial packing composed by: 1 box with 10 right slides and 1 box with 10 left slides.



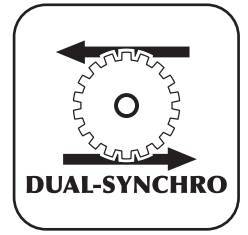
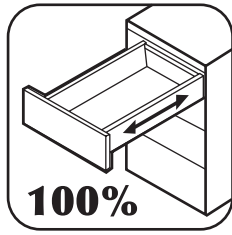
Dual-Synchro®
for high side stability



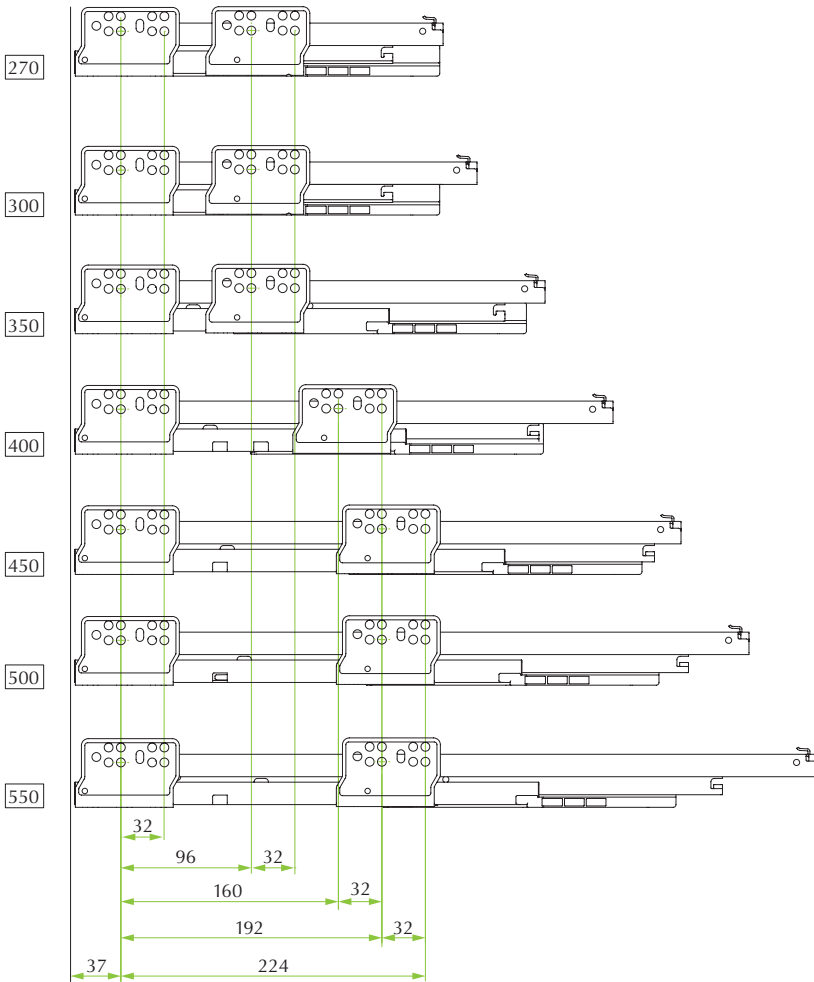
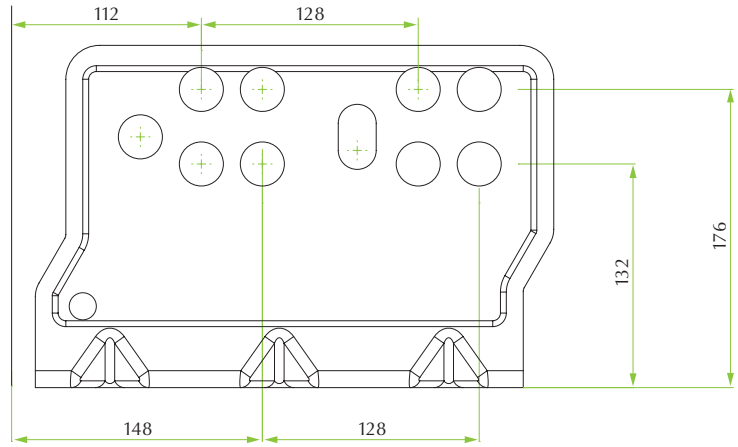
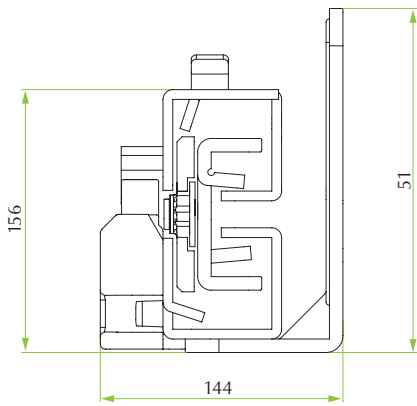
SlowMotion®
adaptive damping



Tool-less slide-fixing
of drawer on slide



Slides dimensions & drilling position

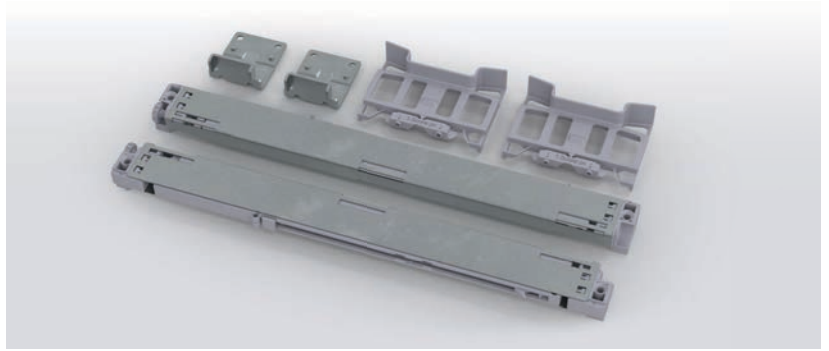
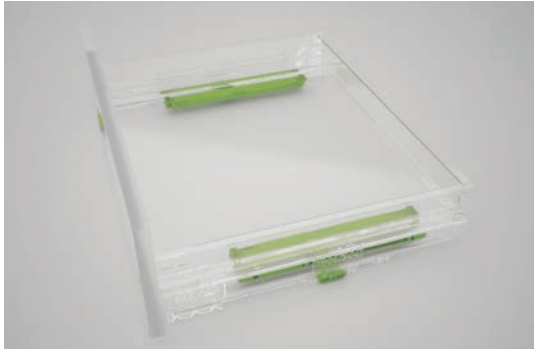


Nominal length	Slide length
270	275
300	299
350	349
400	399
450	449
500	499
550	549

Cabinet depth = slide length + 3mm



OneTouch+SlowMotion technology



Add-on device for hand-less furniture with integrated SlowMotion technology

Benefits for the industry

- Efficient and easy to install on standard Ten² drawer
- Mechanical solution: no wires or electrical connection required
- Minimum and adjustable gap between the door and the cabinet
- It works normally even if the drawer is pulled outwards
- It can be retrofitted anytime

Benefits for the consumer

- Just a light touch and the drawer opens by itself
- Smooth and silent closure without any effort
- Invisible installation under the drawer
- Suitable for all kind of hand-less furniture

Code

58.MY01.0600.00000

Description

Kit OneTouch+SlowMotion technology

Packing

20 pcs

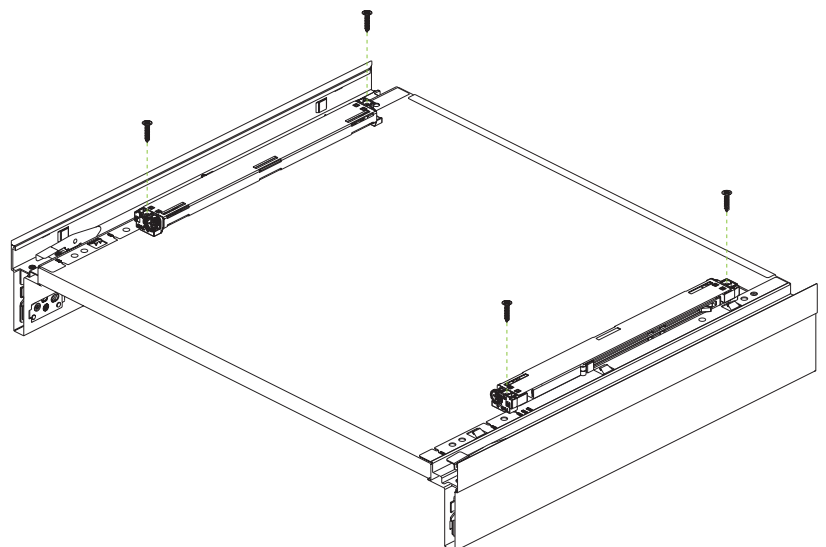
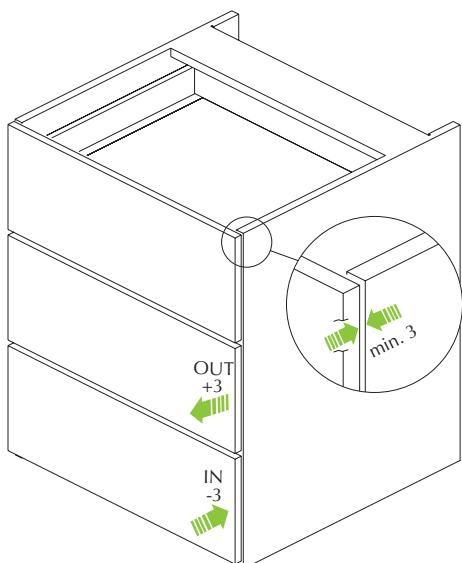
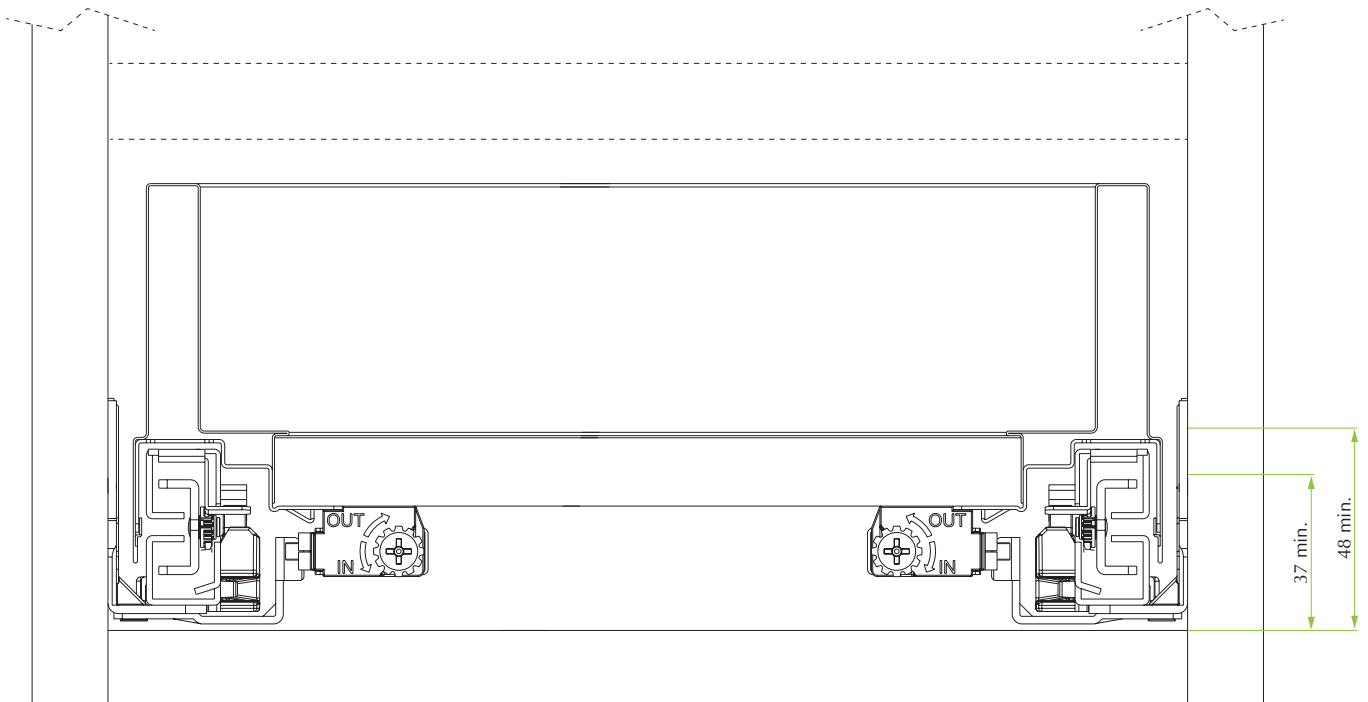
*Kit consisting of 2 OneTouch+SlowMotion devices, 2 drilling jig, 2 brackets, fixing screws.
-- cabinet side panel thickness: 16/18 (mm).*



View of the OneTouch+SlowMotion device assembled under the drawer

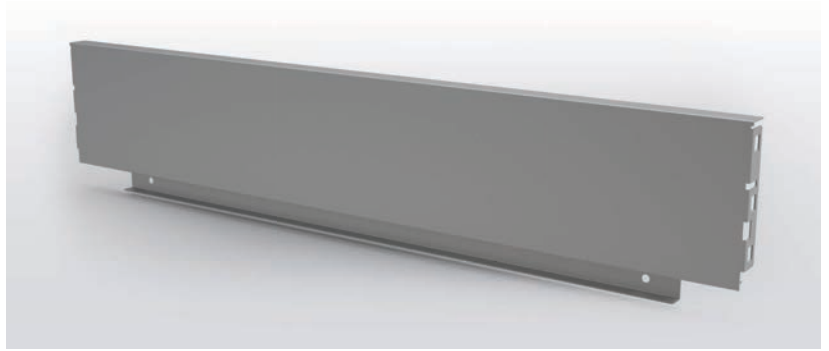


OneTouch+SlowMotion technology application





Steel back panels



Steel back panel, epoxy finish, for consistent look and strong construction

Benefits for the industry

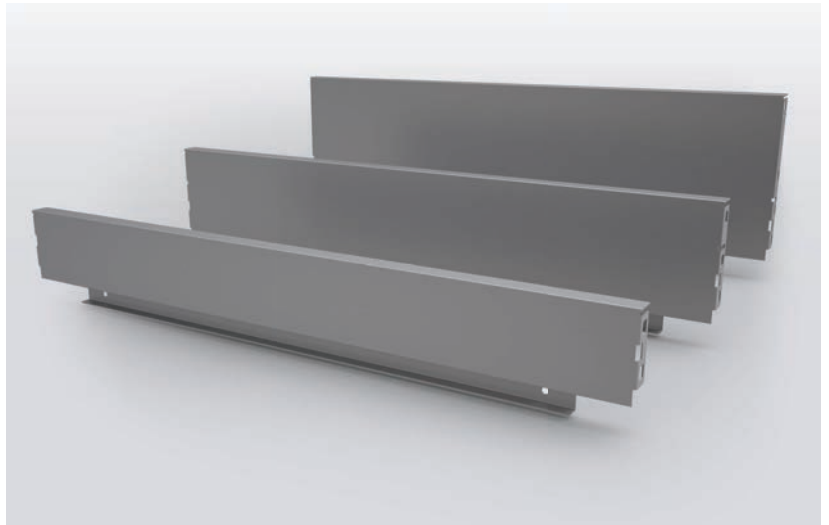
- Three heights: 90, 120 and 180 mm
- Ten widths from 300 to 1200 mm
- Custom width upon request
- Available for 16 and 18 mm cabinet side panel thickness
- Thick material for strong construction and stability

Benefits for the consumer

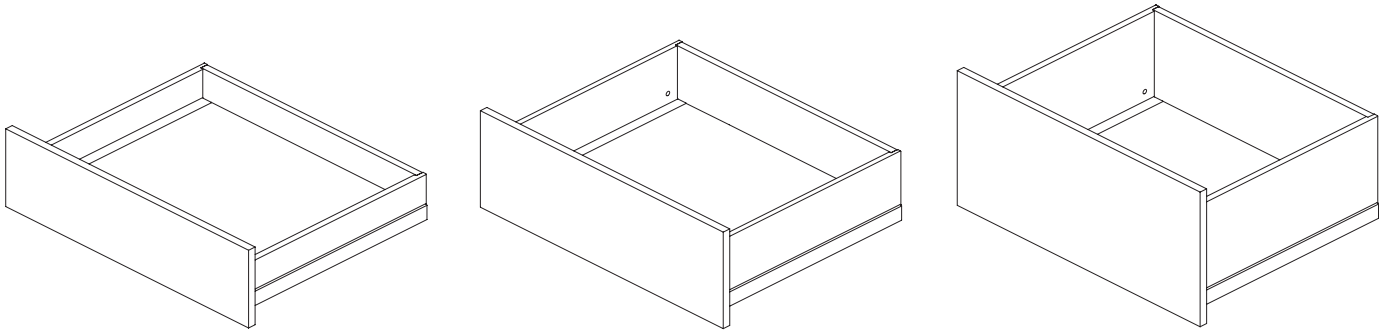
- Four standard finishes matching perfectly the drawer finish: Coffee Black, Storm Grey, standard Grey and Polar White
- Perfect side finish and suppression of all open holes for high quality perception

Code	Description	Packing
58.PYPA.**.^- .000	Steel back panel H90	20 pcs
58.PYPB.**.^- .000	Steel back panel H120	10 pcs
58.PYPS.**.^- .000	Steel back panel H180	10 pcs

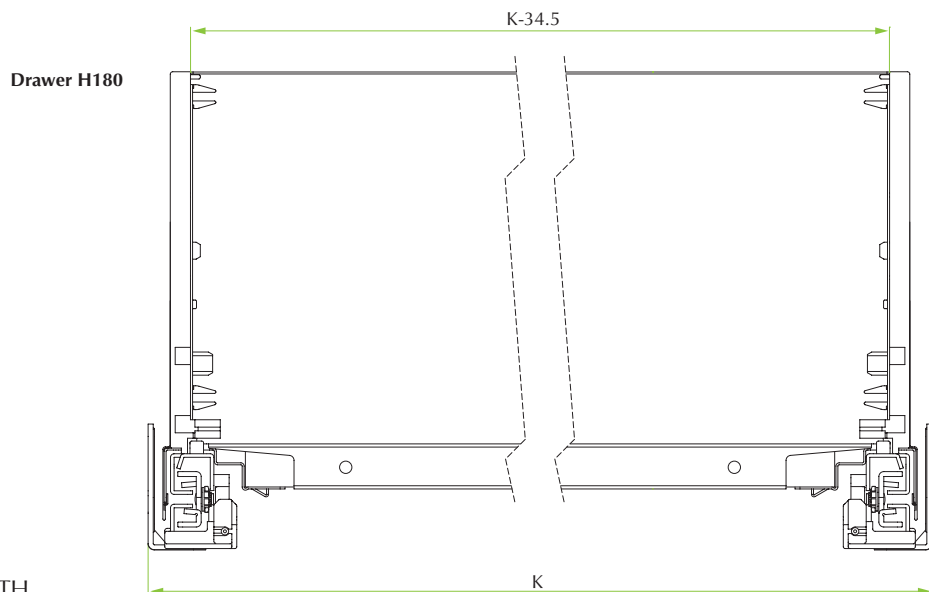
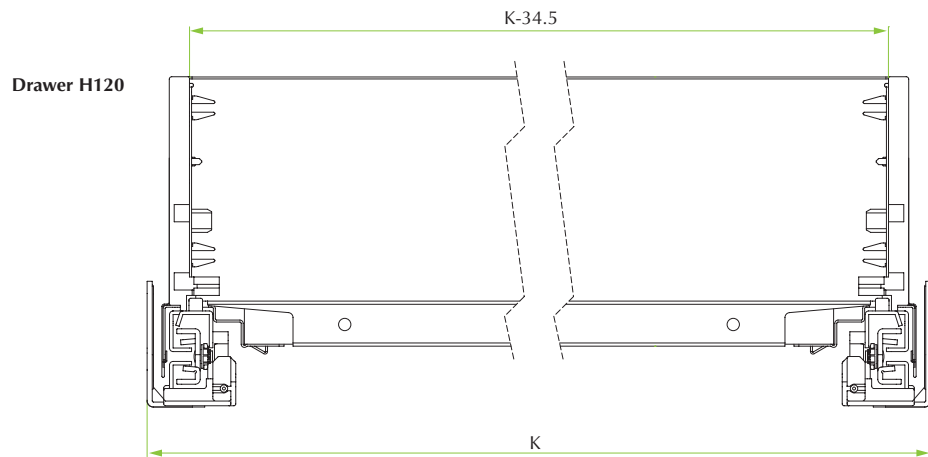
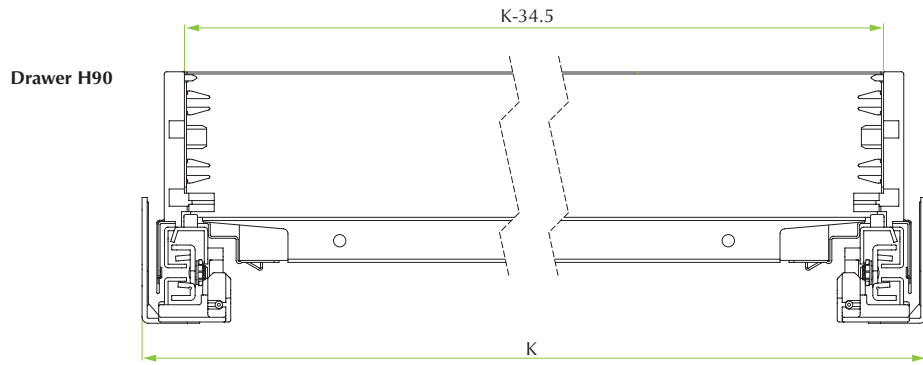
** colour codes: N2 = Coffee Black / S8 = Storm Grey / A6 = standard Grey / F1 = Polar White.
 ^^ back panel width: 30/35/40/45/50/60/80/90/10/12 (example 45 stands for 450mm cabinet width).
 - - cabinet side panel thickness: 16/18 (mm).



Three steel back panel heights



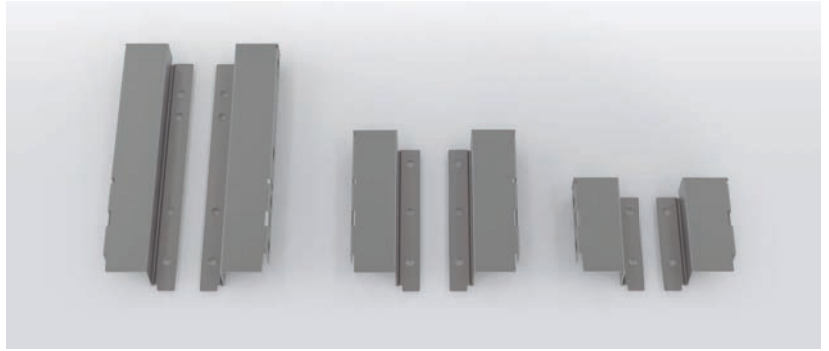
Steel back panel



K = INTERNAL CABINET WIDTH



Back fixings for wooden back panel



Steel back fixings, epoxy finish, for versatility in dimensions and design

Benefits for the industry

- Three heights: 90, 120 and 180 mm
- Cover lip on front and top sides to hide back panel cutting marks
- Suitable also for use with extra-high wooden backs
- Easy assembling of the wooden back panel

Benefits for the consumer

- Four standard finishes matching perfectly the drawer finish: Coffee Black, Storm Grey, standard Grey and Polar White
- Perfect side finish and suppression of all open holes for high quality perception

Code	Description	Packing
58.AYPA.**.0000.000	Set of steel back fixings H90	50 sets
58.AYPB.**.0000.000	Set of steel back fixings H120	50 sets
58.AYPS.**.0000.000	Set of steel back fixings H180	50 sets

** colour codes: N2 = Coffee Black / S8 = Storm Grey / A6 = standard Grey / F1 = Polar White.



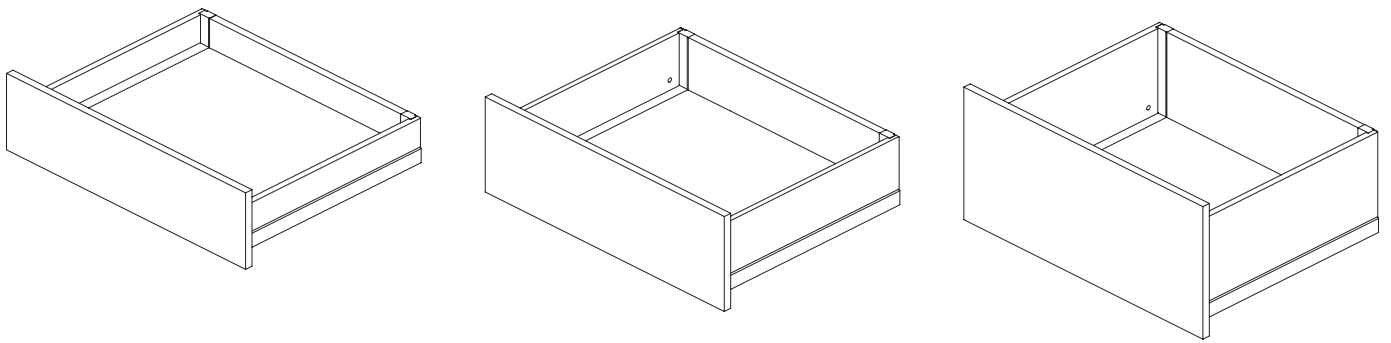
Back fixing H90



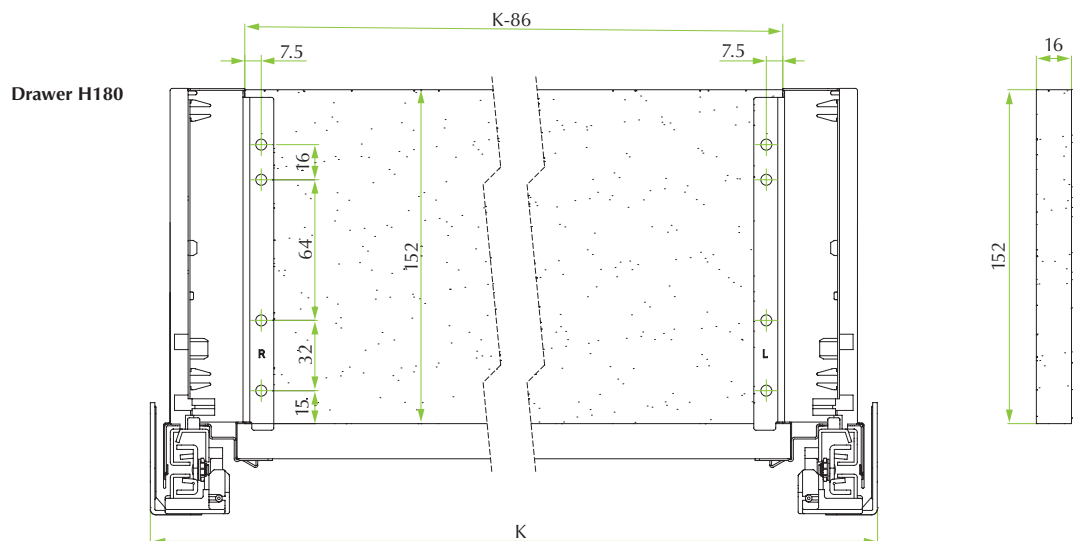
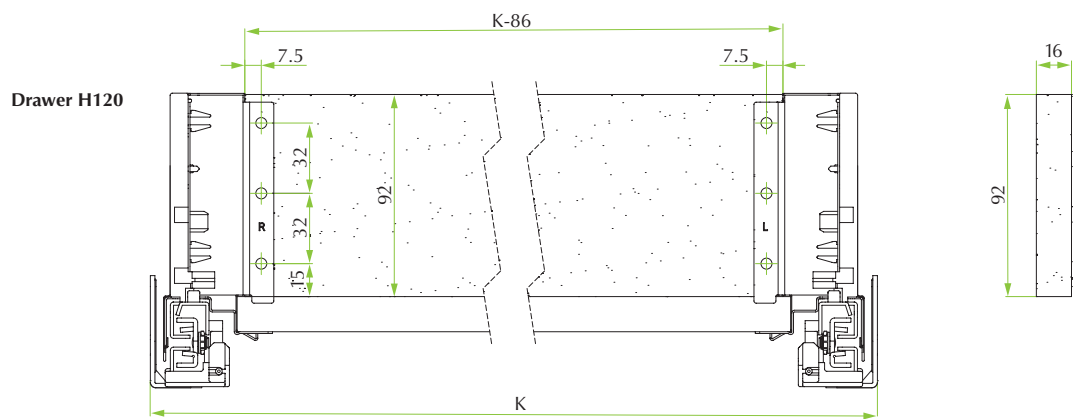
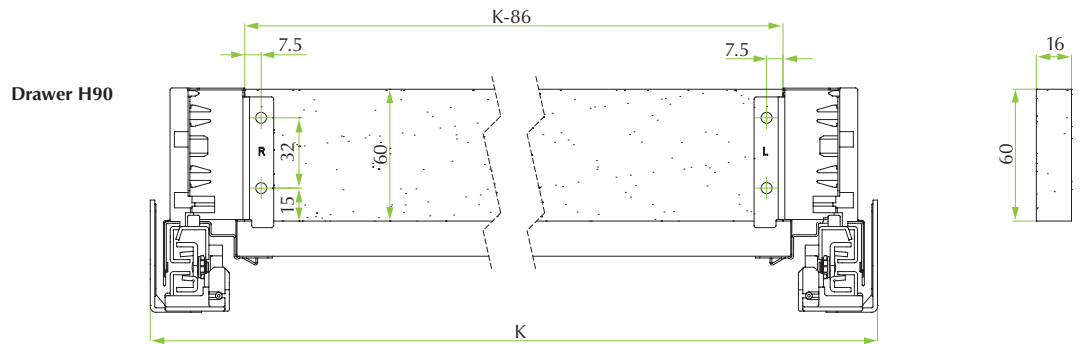
Back fixing H180 with railing



Back fixing H180



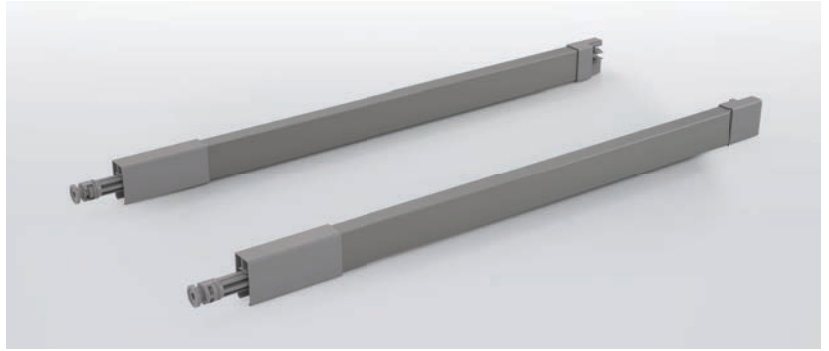
Wooden back panel - Back view



K = INTERNAL CABINET WIDTH



Rectangular railing system



Steel railing bars, epoxy finish, for perfect volume management and strong construction

Benefits for the industry

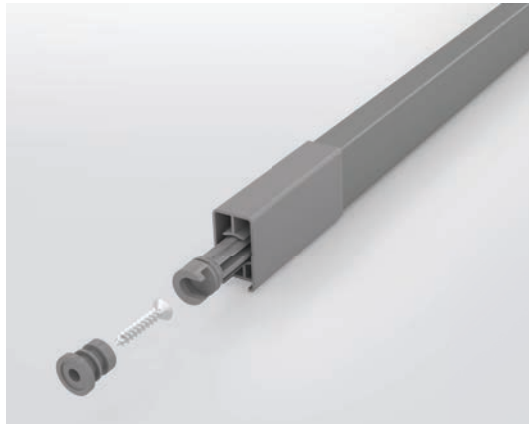
- Seven dimensions adapted to each drawer depth
- Simple click-on bracket for safe back fixing on steel panel or bracket for wooden panel
- Integrated inclination adjustment for +/- 3.5mm

Benefits for the consumer

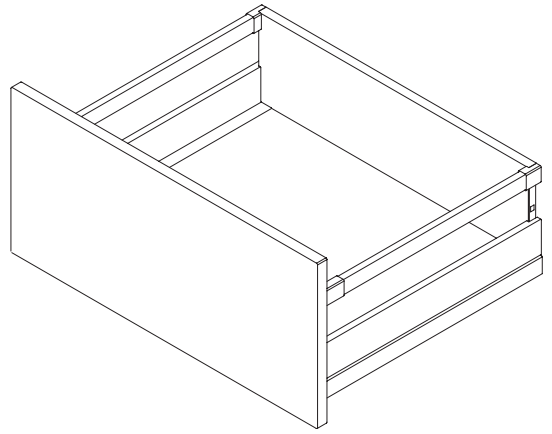
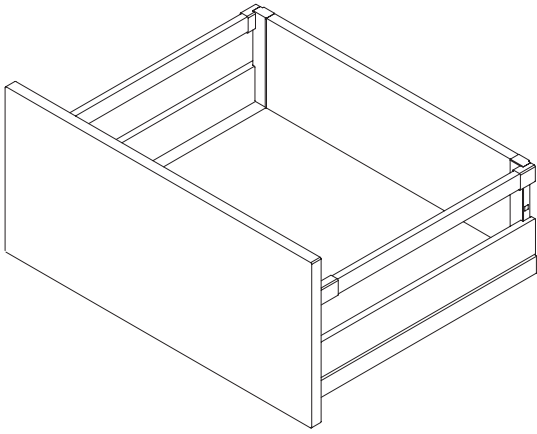
- Four standard metal finishes matching perfectly the drawer finish: Coffee Black, Storm Grey, standard Grey and Polar White
- Colour and finish of plastic components enhances quality feel
- Excellent side retention in high drawer applications

Code	Description	Packing
58.RYD3.**.°°.0L000	Left steel rectangular railing screw-on	40 pcs
58.RYD3.**.°°.0R000	Right steel rectangular railing screw-on	40 pcs

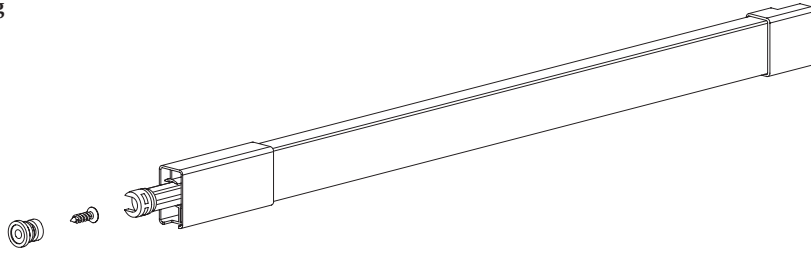
*** colour codes: N2 = Coffee Black / S8 = Storm Grey / A6 = standard Grey / F1 = Polar White.
°° railing tube dimensions: 27/30/35/40/45/50/55
(example 27 stands for 270mm railing length/drawer depth).*



Screw-on railing



Screw-on railing



Nominal length

270

300

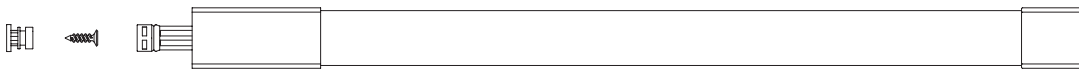
350

400

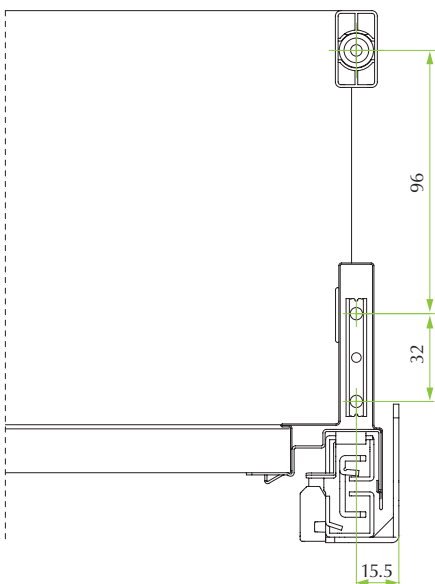
450

500

550

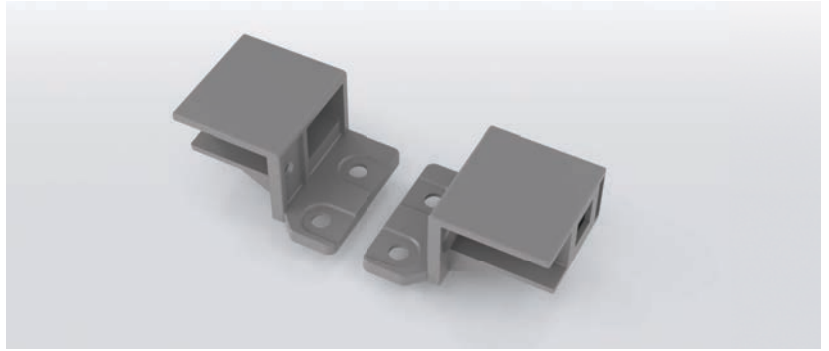


Application





Back fixing brackets for rectangular railing



Plastic back fixing brackets for rectangular railing, for versatility in dimensions and design pan drawer

Benefits for the industry

- Railing application for drawers with high wooden back
- Versatile application for standard or internal pan drawer
- Free fixing positioning at any height to the wooden back panel

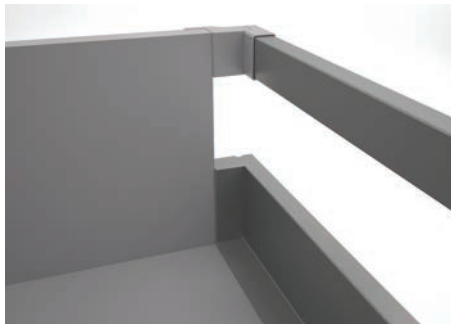
Benefits for the consumer

- Versatile application for standard or internal pan drawer
- Excellent side retention for high drawer applications

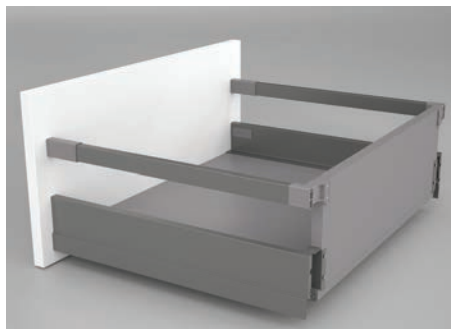
Code	Description	Packing
58.AYPW.**.0000000	Set of brackets for rectangular railing fixing to the high wooden back	50 sets

**plastic colour codes: N2 = Coffee Black / S8 = Storm Grey / A6 = standard Grey / F1 = Polar White.

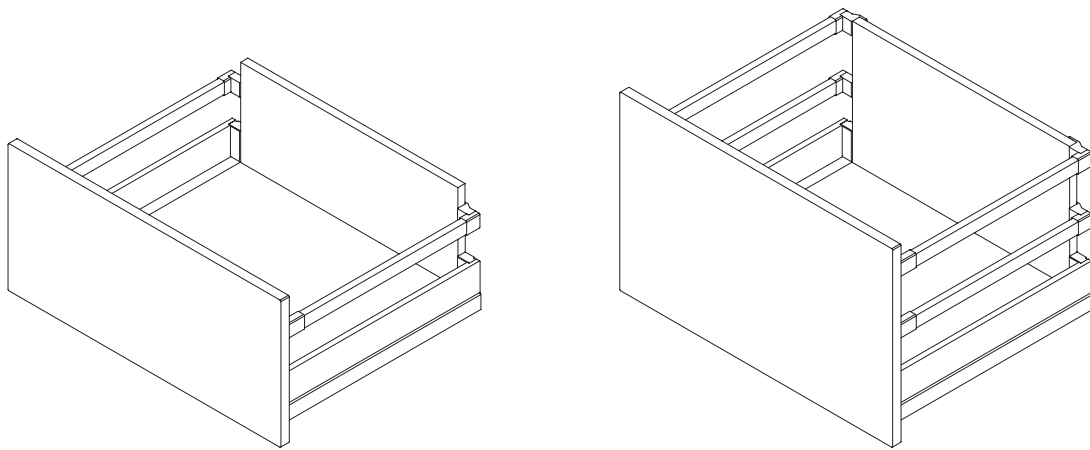
To be combined with an high back wooden panel



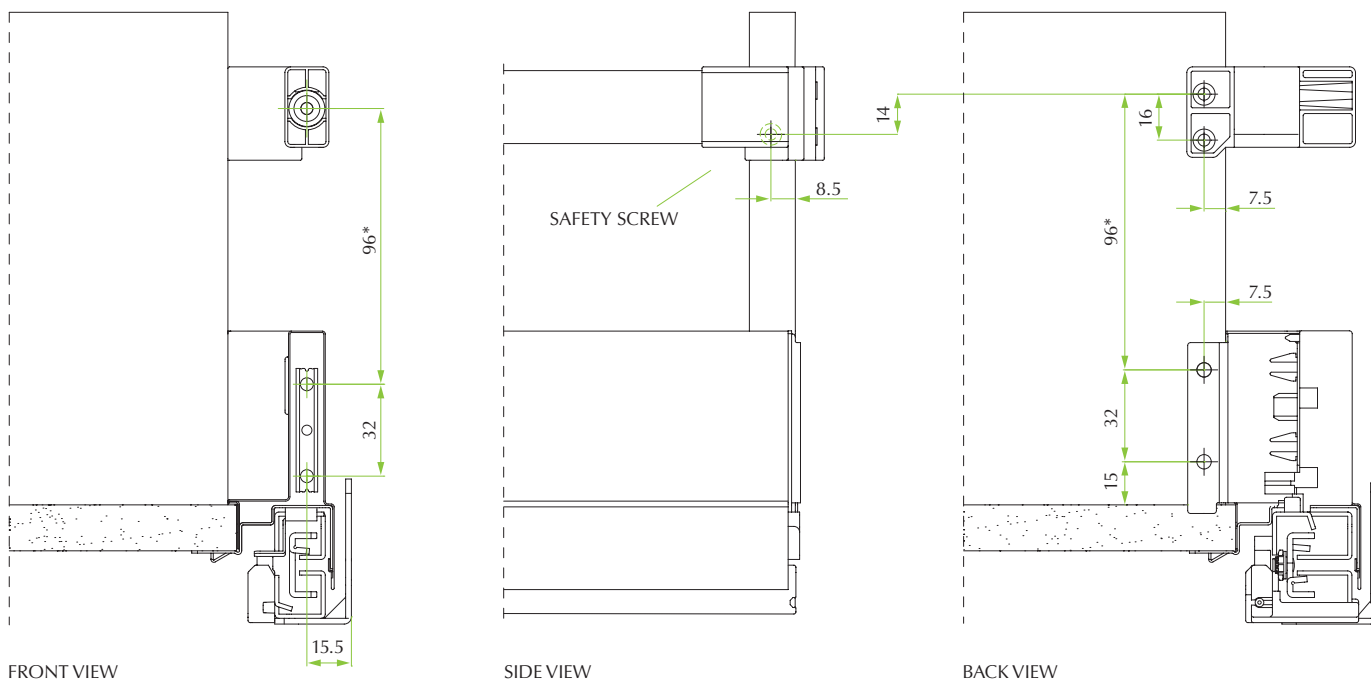
Railing brackets application



Pan drawer application

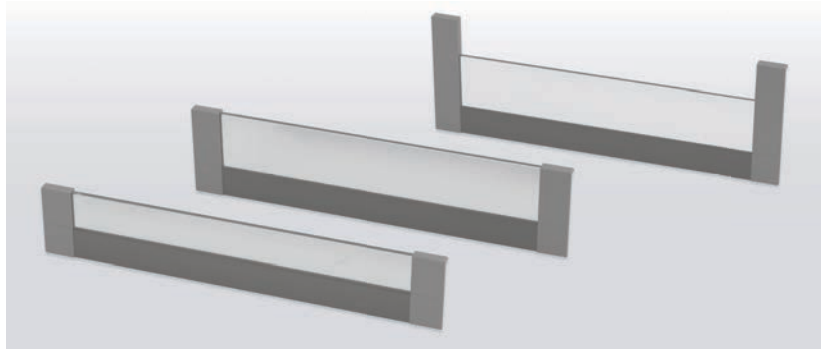


Railing brackets application with wooden back panel



*RECOMMENDED POSITION

IN internal drawer - crystal front



IN kit for 4-sided internal drawer for elegant and practical function

Benefits for the industry

- Plastic frontal brackets with improved fixing system to ensure a stronger coupling and a perfect match with lateral panels
- Brackets available in 3 heights: 90, 120 and 180 mm
- Crystal front system consisting of crystal profile to be cut on size of the drawer width and to be used with lower aluminium profile and frontal bracket adapters
- No need for edge banding on the front of the drawer bottom
- Standard clip-on function for ease of assembly

Benefits for the consumer

- Four standard metal finishes matching perfectly the drawer finish: Coffee Black, Storm Grey, standard Grey and Polar White
- Very practical function behind turning or sliding doors
- High-end look thanks to elegant materials and perfect finishing

IN drawer H90

Code	Description	Packing
58.AY4A.**.V000.000	Set of plastic frontal brackets for internal drawer H90	50 sets
58.PY4A.OC.1093.000	Crystal front profile - 1093mm to be cut on size	5 pcs
<i>Clear crystal front profile, 8mm thickness.</i>		
58.PY4V.**.1082.000	Aluminium lower frontal profile – 1082mm to be cut on size - for crystal profile	10 pcs

** colour codes: N2 = Coffee Black / S8 = Storm Grey / A6 = standard Grey / F1 = Polar White.

IN drawer H120

Code	Description	Packing
58.AY4B.**.V000.000	Set of plastic frontal brackets for internal drawer H120	50 sets
58.PY40.OC.1093.000	Crystal front profile - 1093mm to be cut on size	5 pcs
<i>Clear crystal front profile, 8mm thickness.</i>		
58.PY4V.**.1082.000	Aluminium lower frontal profile – 1082mm to be cut on size - for crystal profile	10 pcs

** colour codes: N2 = Coffee Black / S8 = Storm Grey / A6 = standard Grey / F1 = Polar White.

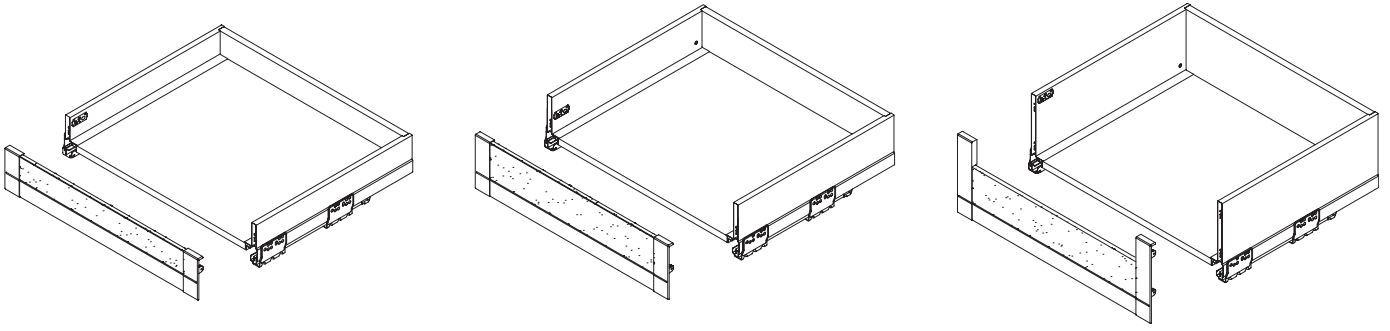
IN drawer H180

Code	Description	Packing
58.AY4S.**.V000.000	Set of plastic frontal brackets for internal drawer H180	50 sets
58.PY40.OC.1093.000	Crystal front profile - 1093mm to be cut on size	5 pcs
<i>Clear crystal front profile, 8mm thickness.</i>		
58.PY4V.**.1082.000	Aluminium lower frontal profile – 1082mm to be cut on size - for crystal profile	10 pcs

** colour codes: N2 = Coffee Black / S8 = Storm Grey / A6 = standard Grey / F1 = Polar White.

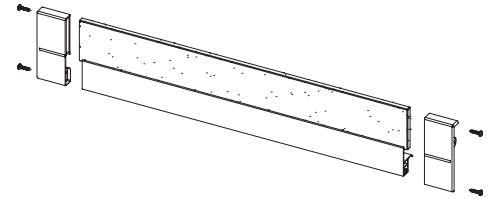
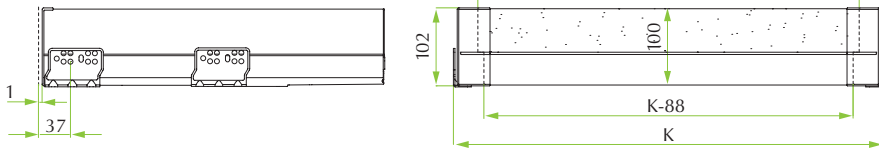


Solution with crystal front

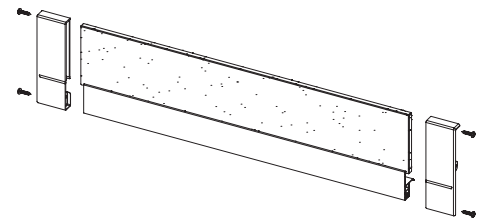
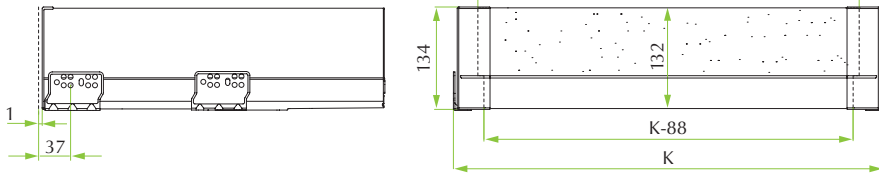


Drilling & front dimensions

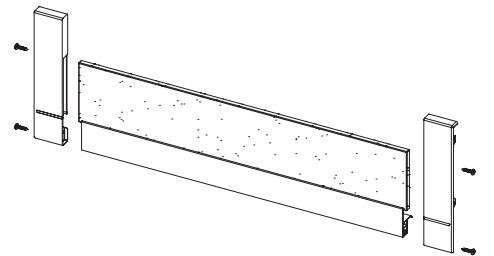
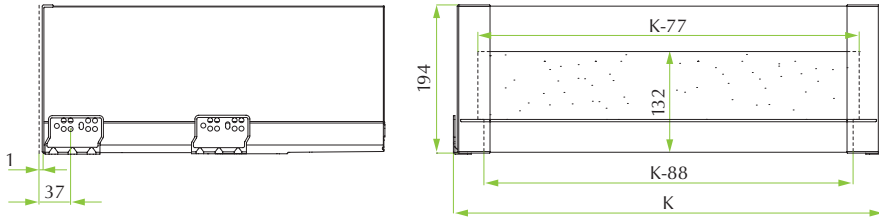
Drawer H90



Drawer H120

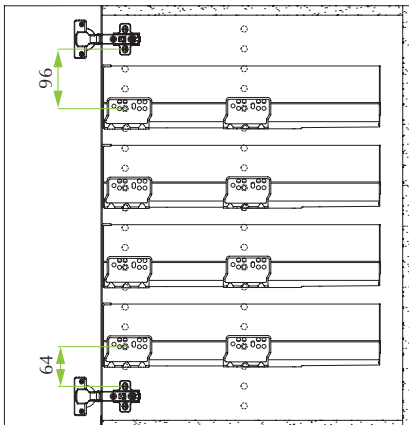


Drawer H180

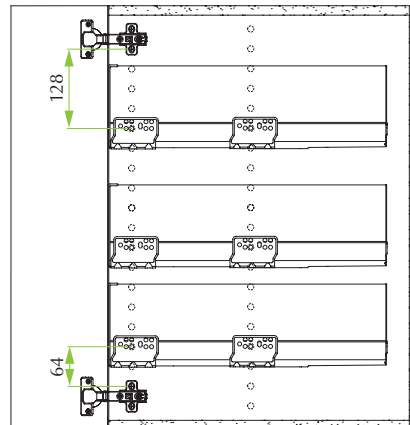


Applications

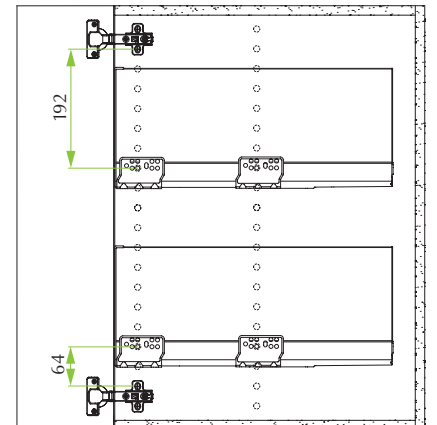
Drawer H90



Drawer H120

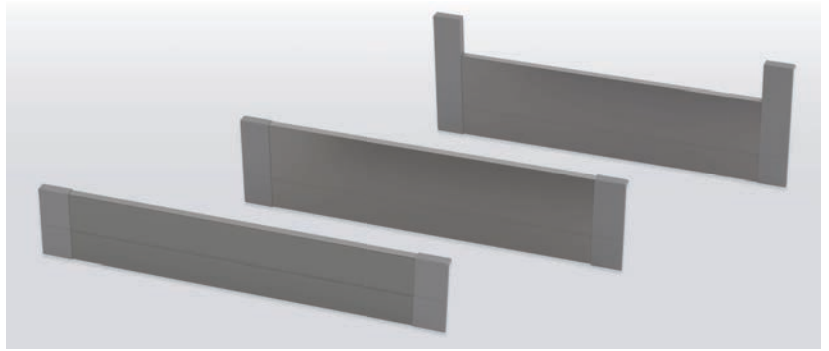


Drawer H180





IN internal drawer - aluminium front



IN kit for 4-sided internal drawer for elegant and practical function

Benefits for the industry

- Plastic frontal brackets with improved fixing system to ensure a stronger coupling and a perfect match with lateral panels
- Brackets available in 3 heights: 90, 120 and 180 mm
- Aluminium front with elegant shape and to be cut on size of the drawer width and to be used with frontal brackets
- No need for edge banding on the front of the drawer bottom
- Standard clip-on function for ease of assembly

Benefits for the consumer

- Four standard metal finishes matching perfectly the drawer finish: Coffee Black, Storm Grey, standard Grey and Polar White
- Very practical function behind turning or sliding doors
- High-end look thanks to elegant materials and perfect finishing

IN drawer H90

Code	Description	Packing
58.AY4A.**.0000.000	Set of plastic frontal brackets for internal drawer H90	50 sets
58.PY4A.**.1082.000	Aluminium front panel – 1082mm to be cut on size	10 pcs

** colour codes: N2 = Coffee Black / S8 = Storm Grey / A6 = standard Grey / F1 = Polar White.

IN drawer H120

Code	Description	Packing
58.AY4B.**.0000.000	Set of plastic frontal brackets for internal drawer H120	50 sets
58.PY40.**.1082.000	Aluminium front panel – 1082mm to be cut on size	10 pcs

** colour codes: N2 = Coffee Black / S8 = Storm Grey / A6 = standard Grey / F1 = Polar White.

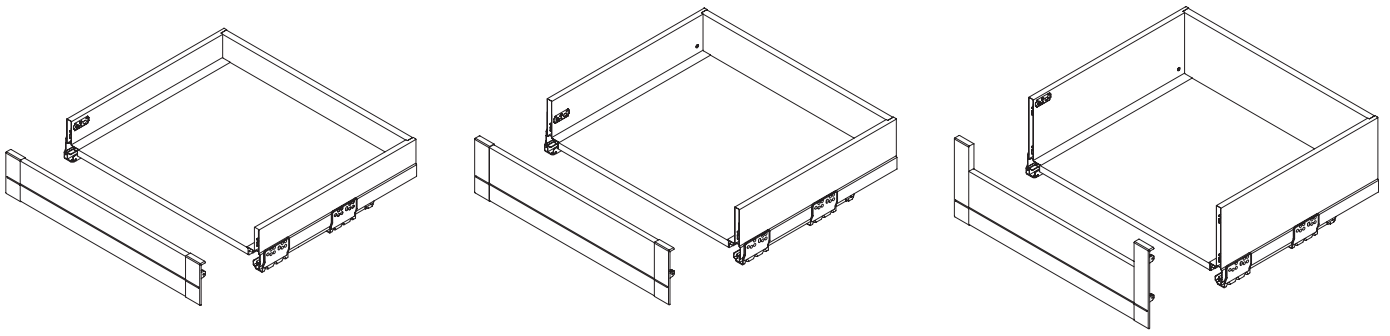
IN drawer H180

Code	Description	Packing
58.AY4S.**.0000.000	Set of plastic frontal brackets for internal drawer H180	50 sets
58.PY40.**.1082.000	Aluminium front panel – 1082mm to be cut on size	10 pcs

** colour codes: N2 = Coffee Black / S8 = Storm Grey / A6 = standard Grey / F1 = Polar White.

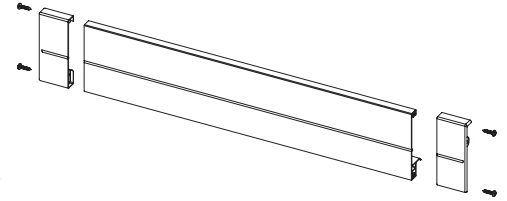
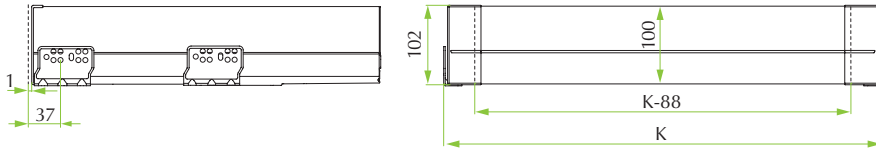


Solution with aluminium front

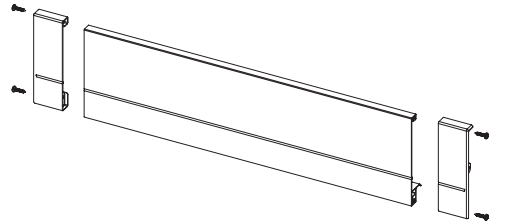
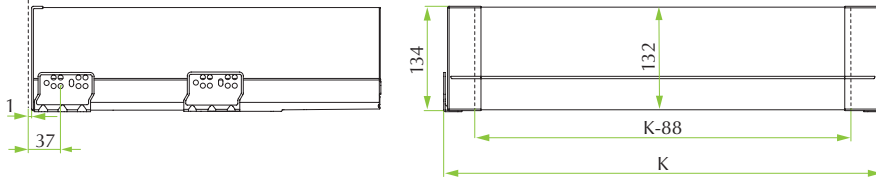


Drilling & front dimensions

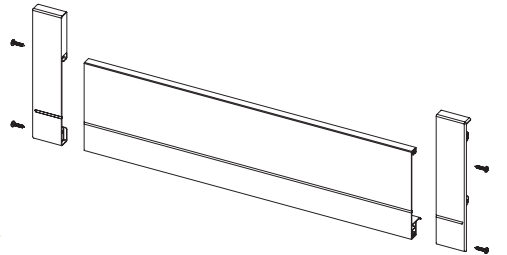
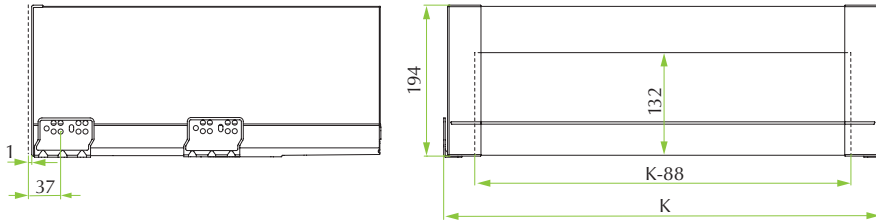
Drawer H90



Drawer H120

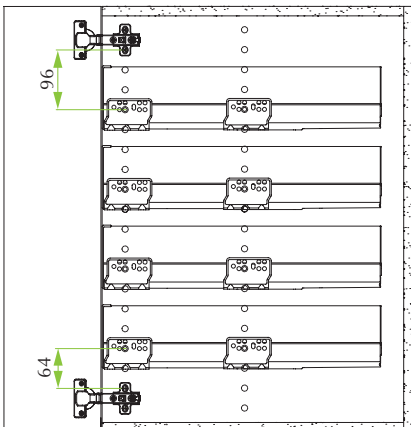


Drawer H180

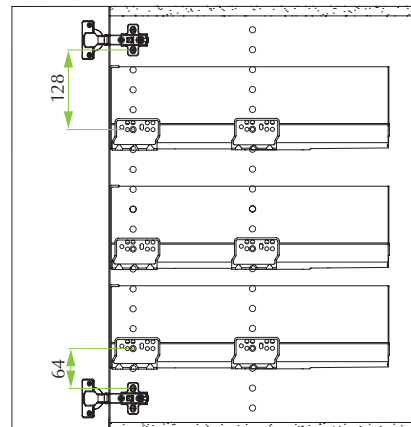


Applications

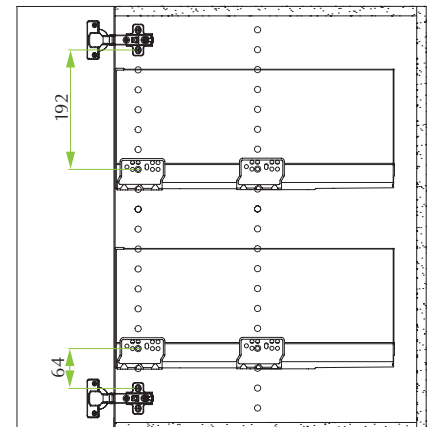
Drawer H90



Drawer H120

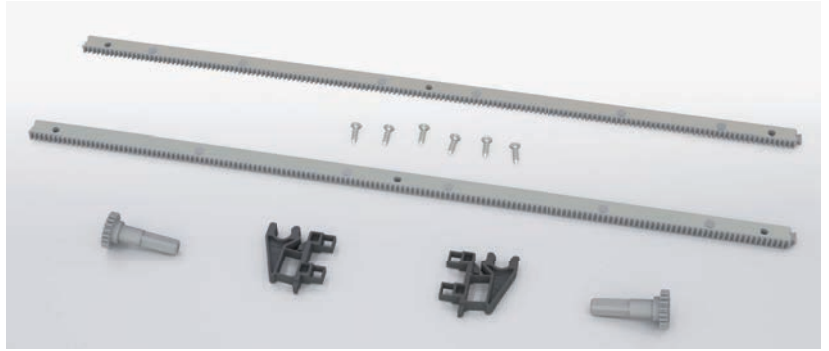


Drawer H180





Stabilizer kit



Stabilizer kit ideal for wide drawer applications

Benefits for the industry

- For a better stability of the complete range of drawer widths
- Recommended for drawers and pan drawers over 900mm of width
- Excellent drawer sliding motion
- Controlled and silent movement

Benefits for the consumer

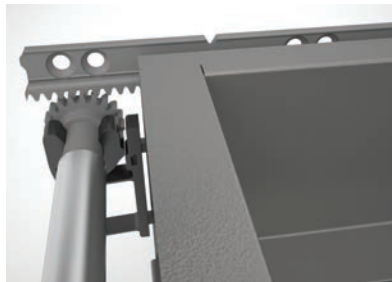
- Perfect drawer stability also in a full load capacity condition
- Smooth movement and silent sliding of the drawer
- Discrete design for a non-invasive solution

Code	Description	Packing
58.CYA0.06.P.45.0000	Stabilizer kit for 450 drawer	50 kits
58.CYA0.06.P.50.0000	Stabilizer kit for 500 drawer	50 kits
58.CYA0.06.P.55.0000	Stabilizer kit for 550 drawer	50 kits

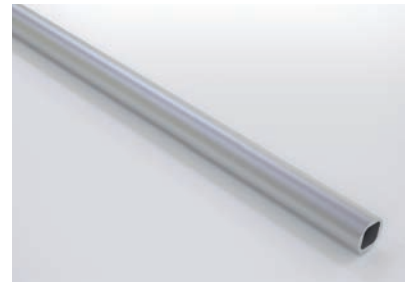
Kit composed by: 2 metal racks, 2 pinions, 2 back brackets, 6 selftapping screws (Ø4x12 mm).

58.CXT0.0A.120.0000	Stabilizer connecting bar - 1200	50 pcs
---------------------	----------------------------------	--------

The anodized aluminium stabilizer bar with 1200mm length needs to be cut to size based on the drawer width.



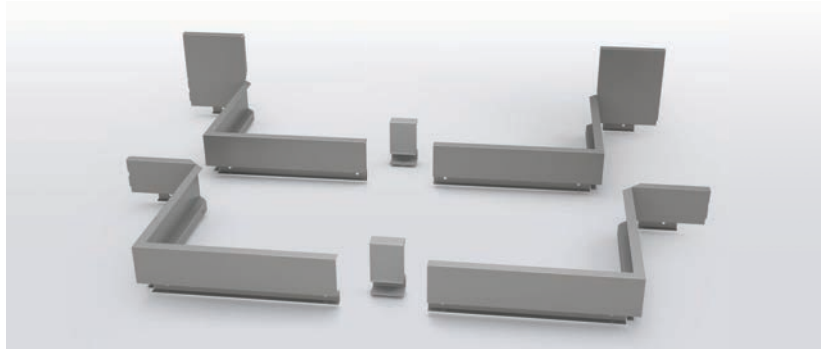
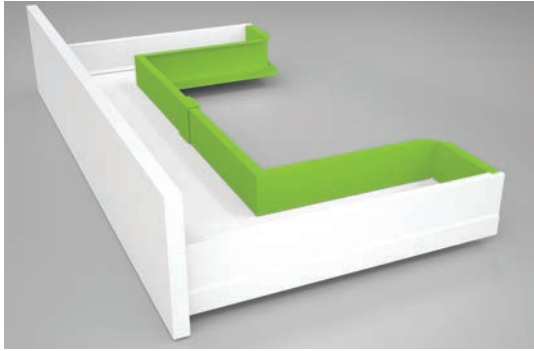
Stabilizer application



Stabilizer connecting bar



Acquario undersink solution



Acquario undersink drawer solution for perfect space management around the siphon

Benefits for the industry

- Kit made by two steel foldable back panels with a central connector
- Available in H90 and H180 mm drawer height
- Application from 450 to 550 mm deep drawers
- Efficient space management under the sink and around the siphon
- Easy to assemble and to adapt to the available space
- Four metal finishes: Coffee Black, Storm Grey, standard Grey and Polar White

Benefits for the consumer

- Efficient space management under the sink and around the siphon
- Four metal finishes: Coffee Black, Storm Grey, standard Grey and Polar White

Code

58.PYLA.**.^^.U0000

58.PYLS.**.^^.U0000

Description

Set Acquario undersink for H90 drawer

Set Acquario undersink for H180 drawer

Packing

10 sets

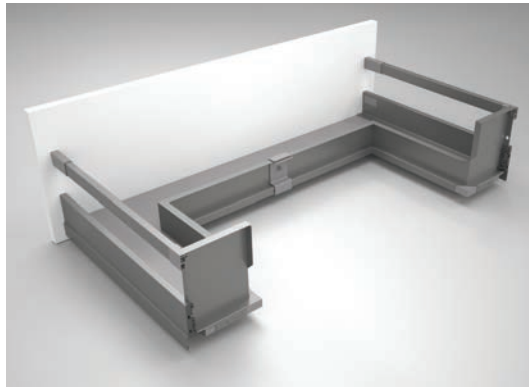
10 sets

** colour codes: N2 = Coffee Black / S8 = Storm Grey / A6 = standard Grey / F1 = Polar White.

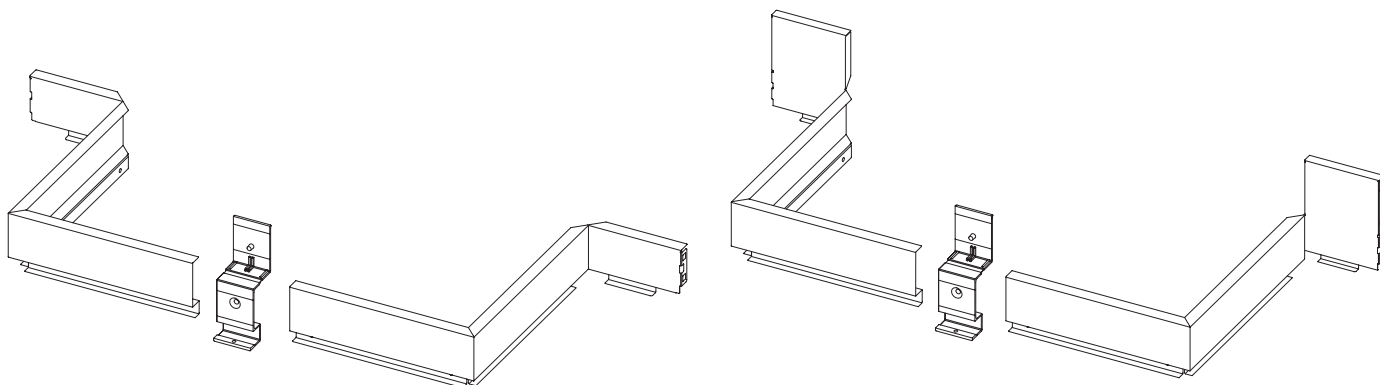
^^ drawer width: 60/80/90/10/12 (example 60 stands for 600mm drawer width).

Packing in set composed by:

- 1 metal back panel right side
- 1 metal back panel left side
- 1 plastic central connector
- 1 screw (Ø4x11 mm) for central connector fixing.

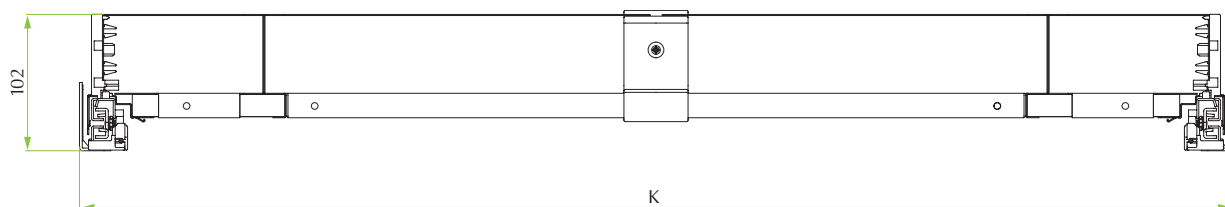


Acquario application with rectangular railing

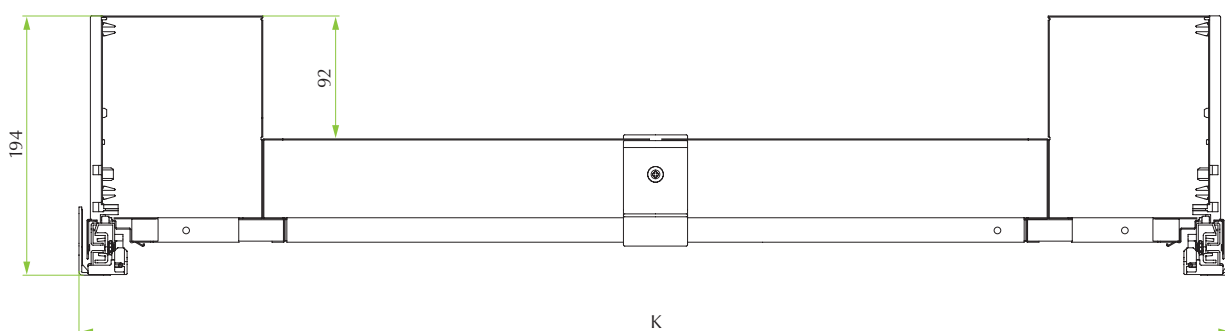


Applications

Drawer H90



Drawer H180



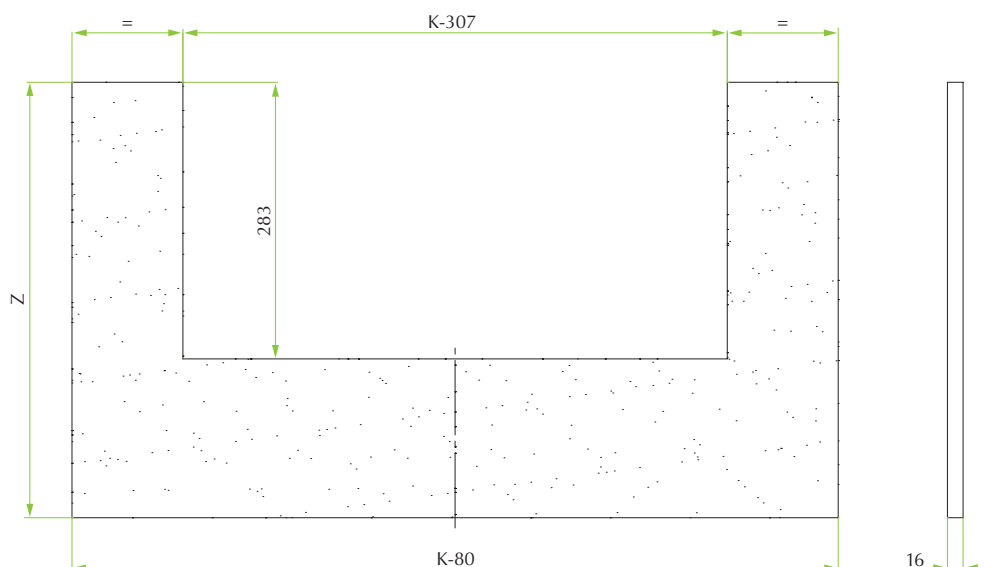
K = INTERNAL CABINET WIDTH

Bottom panel dimensions

A = X-227

X = BOTTOM PANEL WIDTH
Z = BOTTOM PANEL LENGTH

Drawer depth	Z
450	446.5
500	496.5
550	546.5



Values given in mm



Standard drawer Kit



Ten² standard individual kit for ease of distribution and ease of use

Benefits for the industry

- Each kit contains all elements necessary for the realisation of a drawer with exception of the wooden back and bottom panels
- No handling of individual components necessary
- A few kits cover the necessity of almost usual applications
- Standard drawer kits available
- Easy to sell over the counter

Benefits for the consumer

- All components necessary immediately at hand
- No necessity to stock individual components in large volumes and remain with unpaired components
- Ease of transport on site of the packed products and hassle free assembly on site

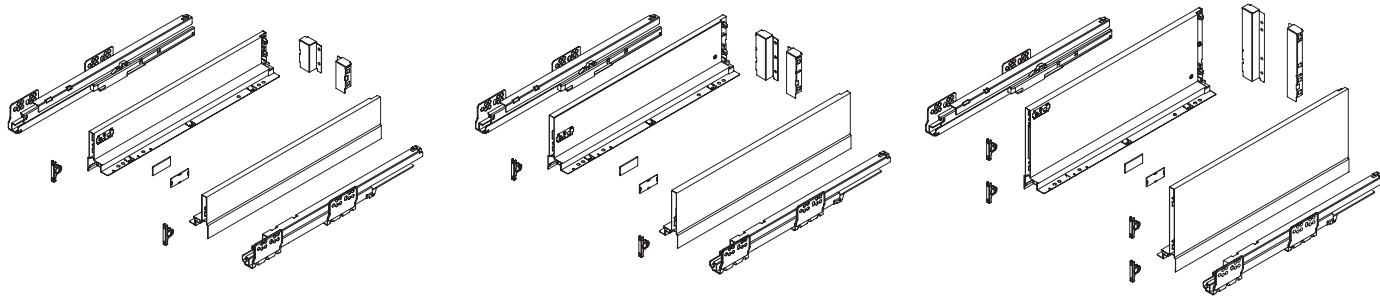
Code	Description	Packing
58.YEAK.**.27.XA000	Ten ² H90 standard drawer kit 270	1 kit
58.YEAK.**.30.XA000	Ten ² H90 standard drawer kit 300	1 kit
58.YEAK.**.35.XA000	Ten ² H90 standard drawer kit 350	1 kit
58.YEAK.**.40.XA000	Ten ² H90 standard drawer kit 400	1 kit
58.YEAK.**.45.XA000	Ten ² H90 standard drawer kit 450	1 kit
58.YEAK.**.50.XA000	Ten ² H90 standard drawer kit 500	1 kit
58.YEAK.**.55.XA000	Ten ² H90 standard drawer kit 550	1 kit
58.YEBK.**.27.XA000	Ten ² H122 standard drawer kit 270	1 kit
58.YEBK.**.30.XA000	Ten ² H122 standard drawer kit 300	1 kit
58.YEBK.**.35.XA000	Ten ² H122 standard drawer kit 350	1 kit
58.YEBK.**.40.XA000	Ten ² H122 standard drawer kit 400	1 kit
58.YEBK.**.45.XA000	Ten ² H122 standard drawer kit 450	1 kit
58.YEBK.**.50.XA000	Ten ² H122 standard drawer kit 500	1 kit
58.YEBK.**.55.XA000	Ten ² H122 standard drawer kit 550	1 kit
58.YESK.**.27.XA000	Ten ² H180 standard drawer kit 270	1 kit
58.YESK.**.30.XA000	Ten ² H180 standard drawer kit 300	1 kit
58.YESK.**.35.XA000	Ten ² H180 standard drawer kit 350	1 kit
58.YESK.**.40.XA000	Ten ² H180 standard drawer kit 400	1 kit
58.YESK.**.45.XA000	Ten ² H180 standard drawer kit 450	1 kit
58.YESK.**.50.XA000	Ten ² H180 standard drawer kit 500	1 kit
58.YESK.**.55.XA000	Ten ² H180 standard drawer kit 550	1 kit

* colour codes: N2 = Coffee Black / S8 = Storm Grey / A6 = standard Grey / F1 = Polar White.

Kit consisting of the following components for a given drawer dimension:

- an assembly instruction
- a pair of left and right drawer sides
- a pair of left and right drawer slides
- a pair of cover caps with FGV logo
- a pair of screw-on front brackets
- a pair of back fixing brackets

All individual parts and further components of the system available separately. See the complete catalogue and the assembly instructions.



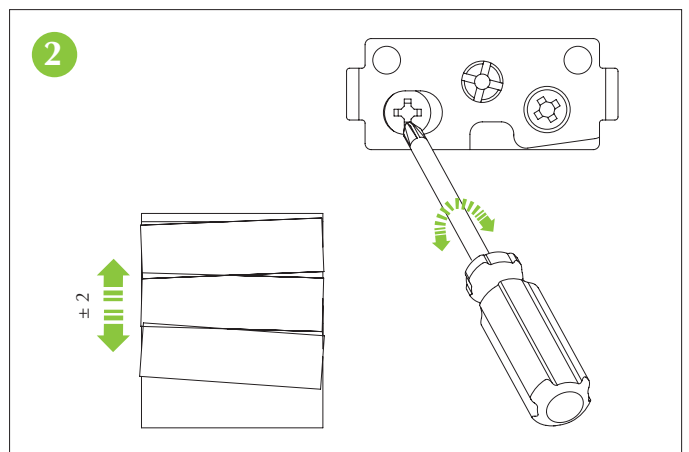
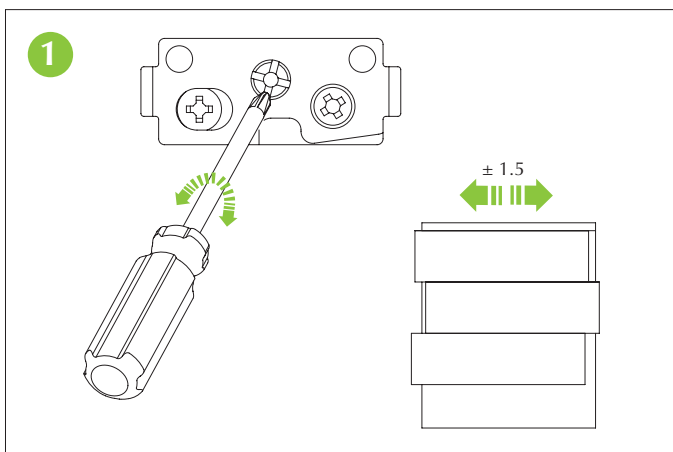
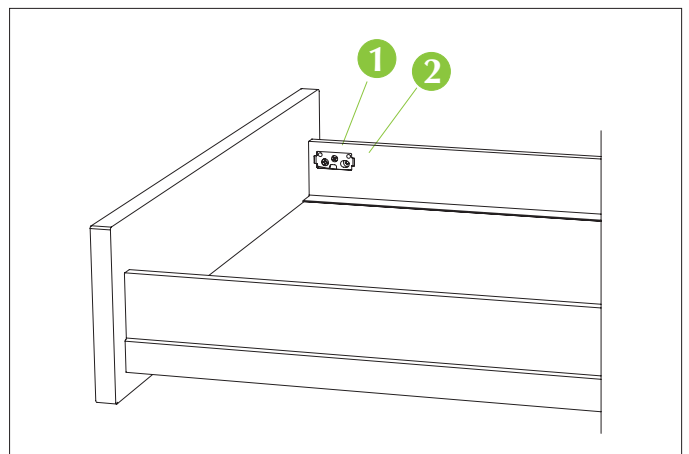
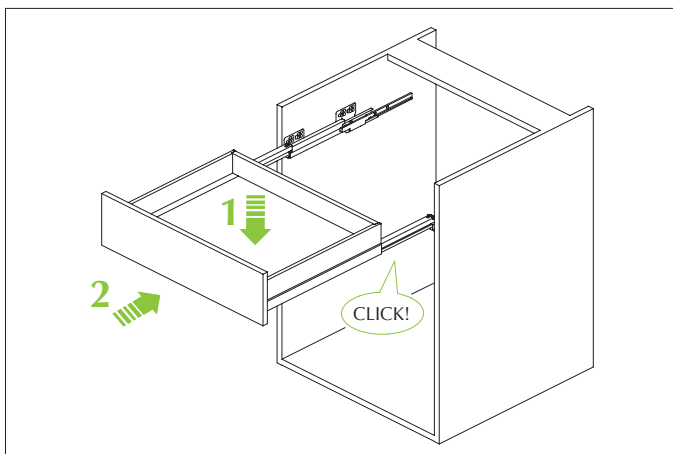
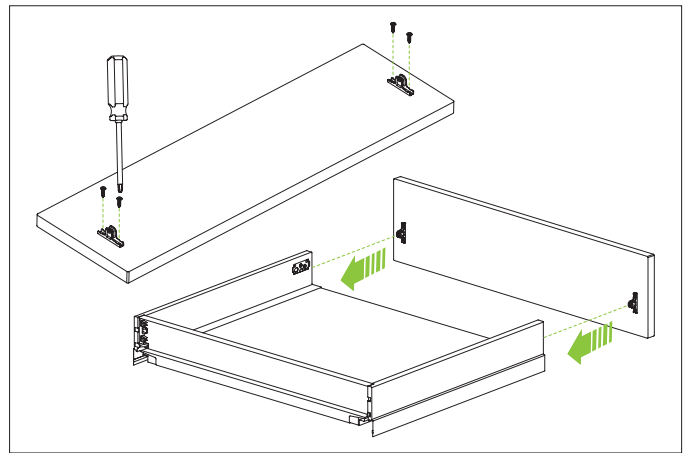
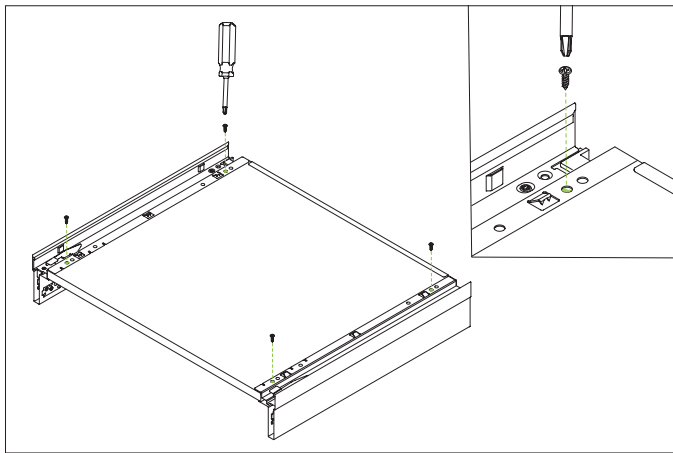
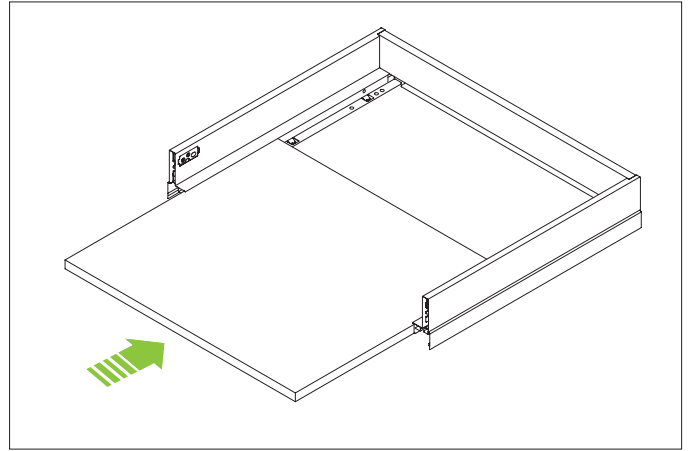
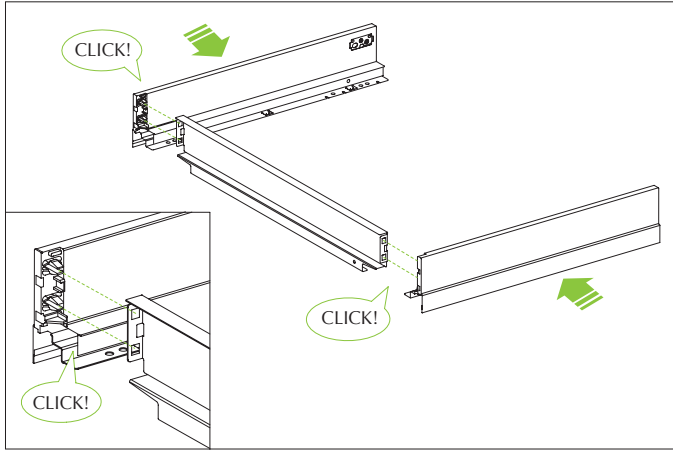
Standard kit



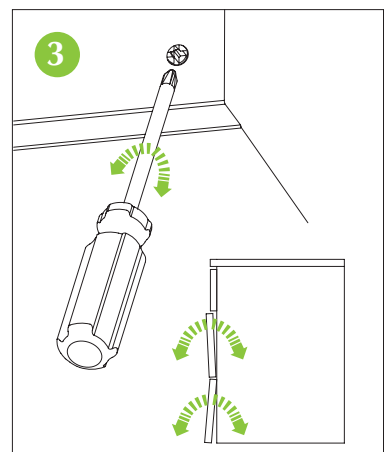
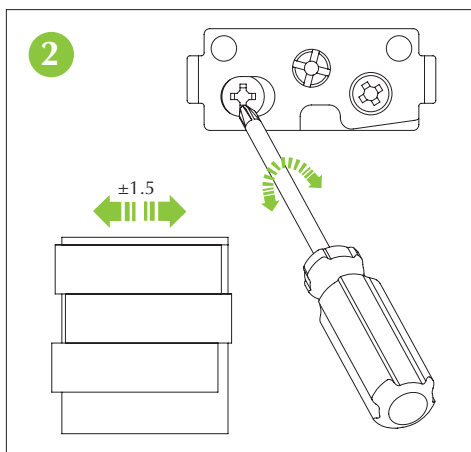
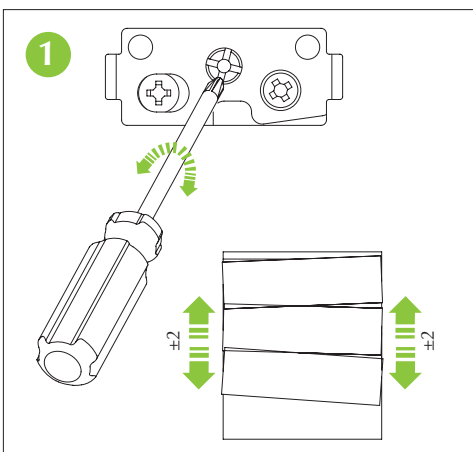
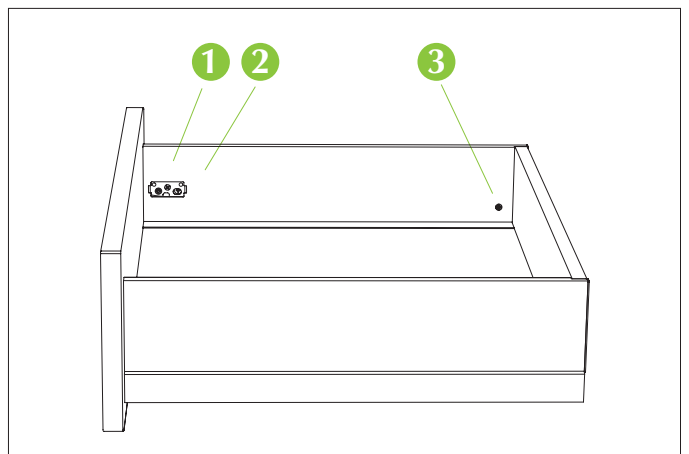
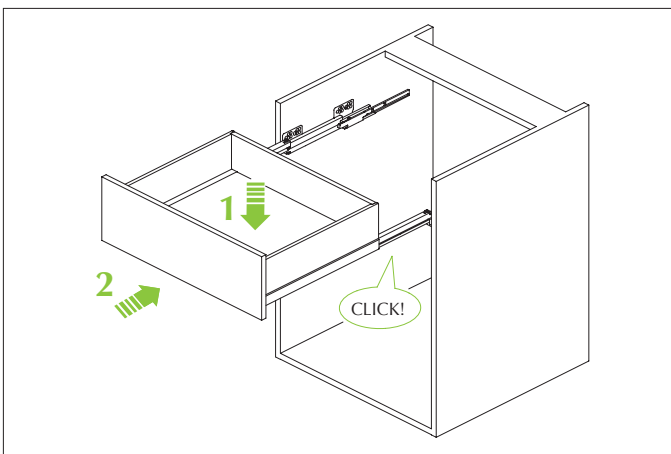
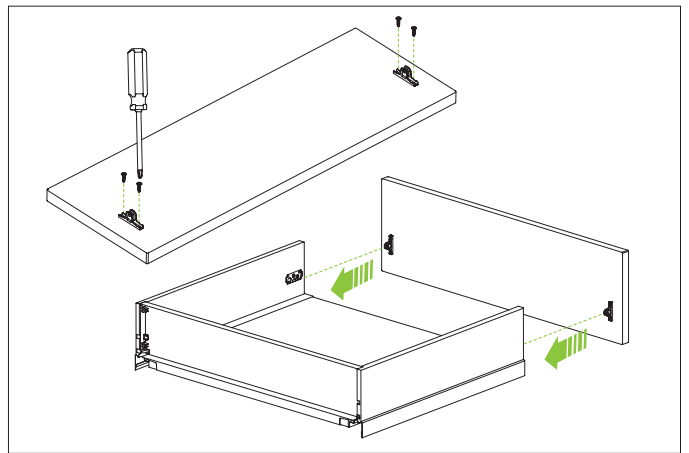
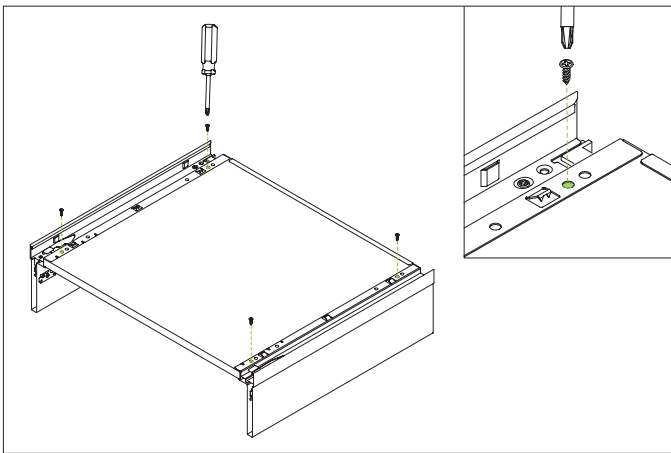
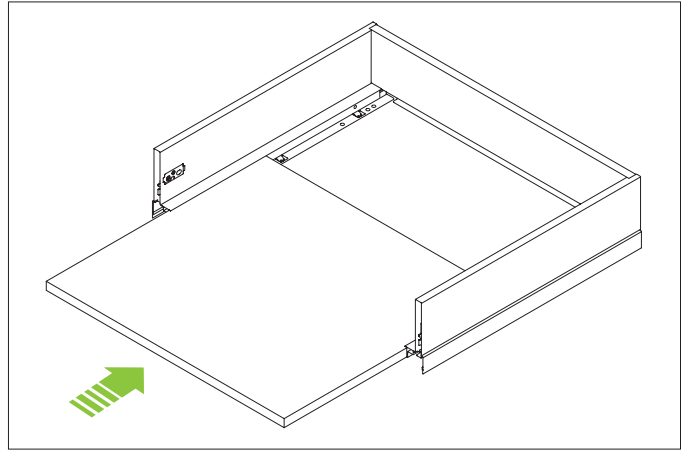
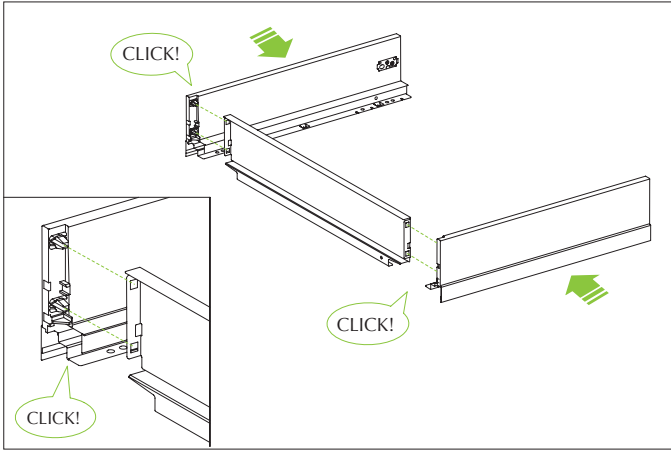


Instructions for use

Drawer H90 assembly sequence



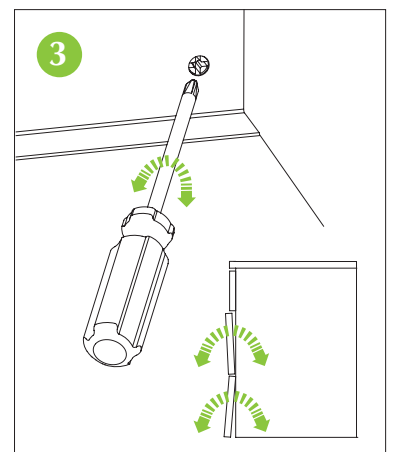
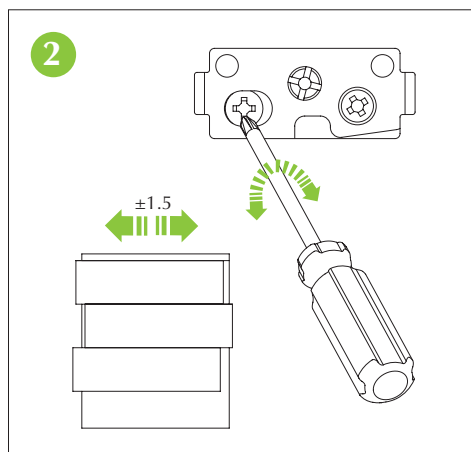
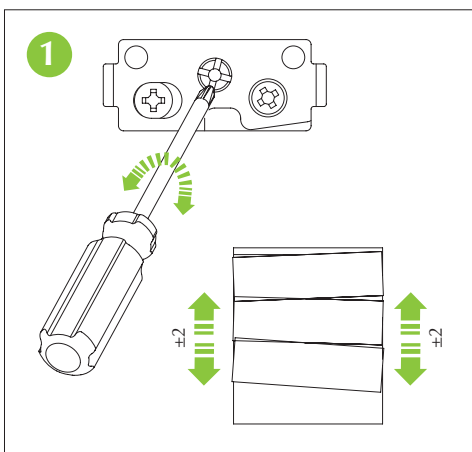
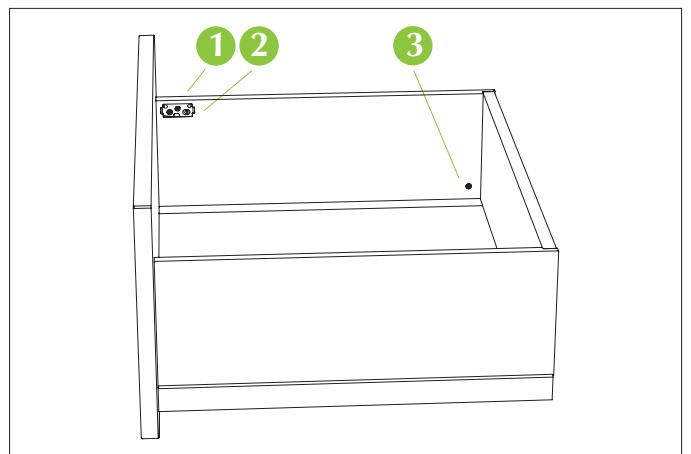
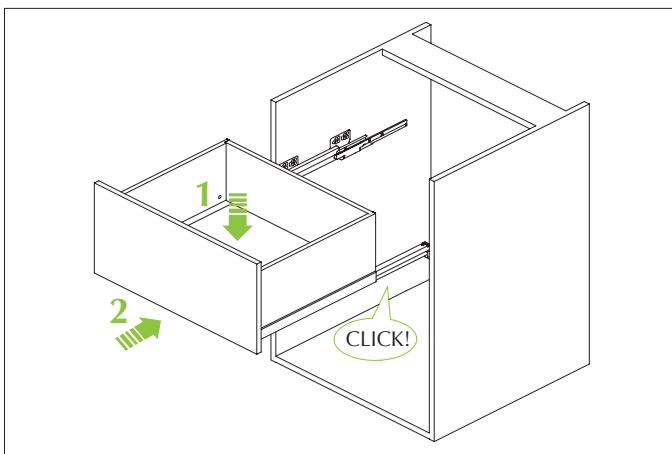
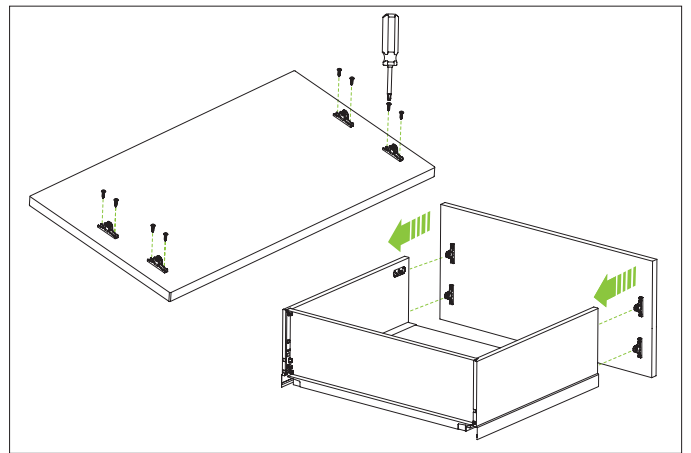
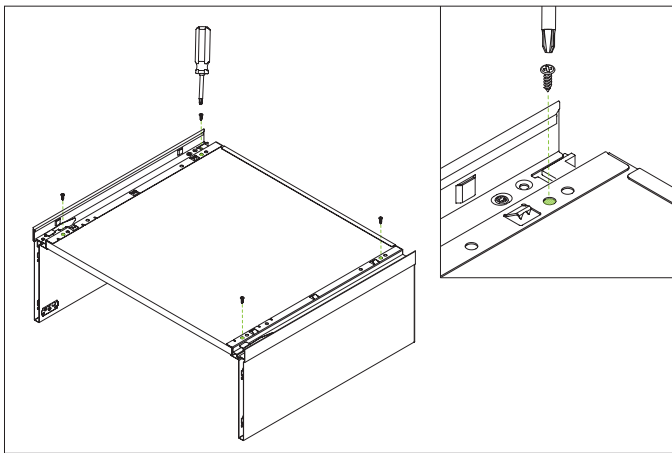
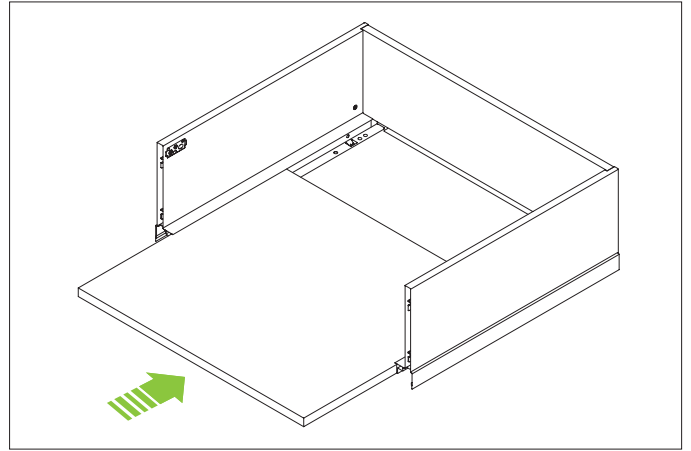
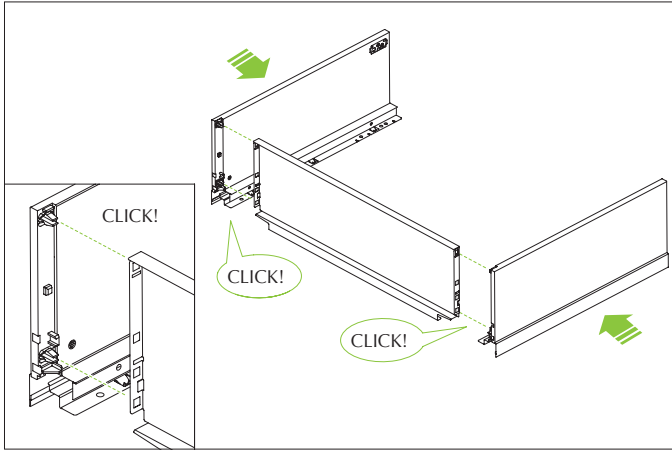
Drawer H120 assembly sequence



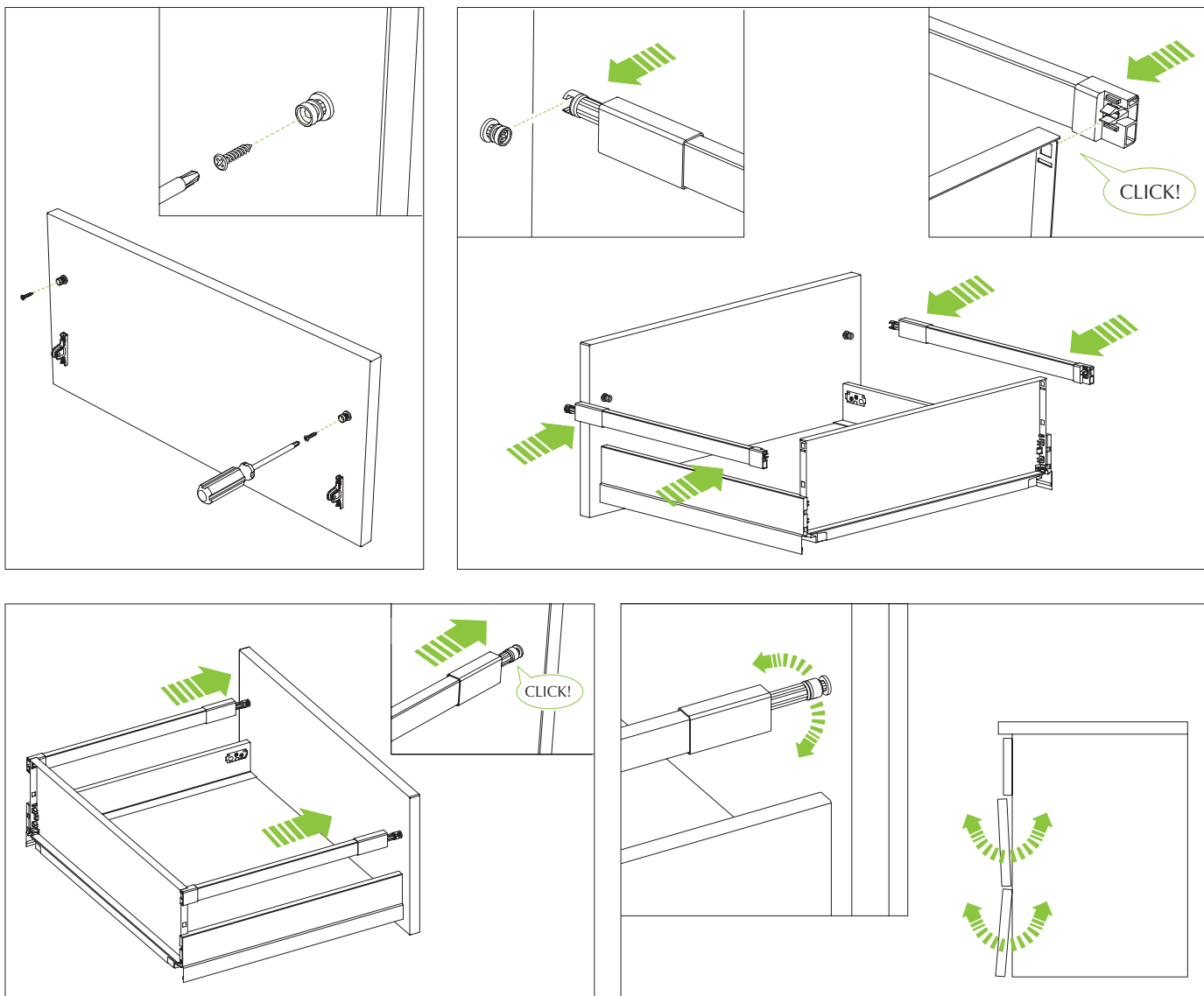


Instructions for use

Drawer H180 assembly sequence



Rectangular railing assembly sequence

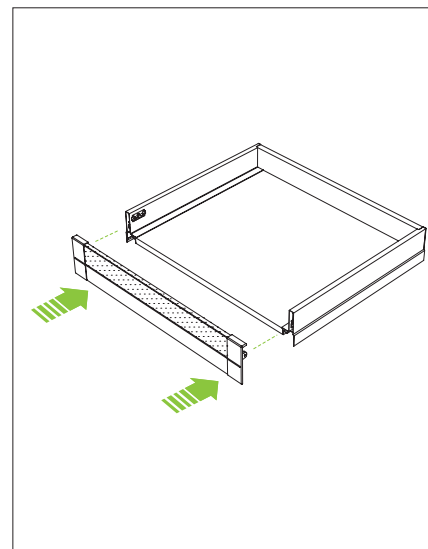
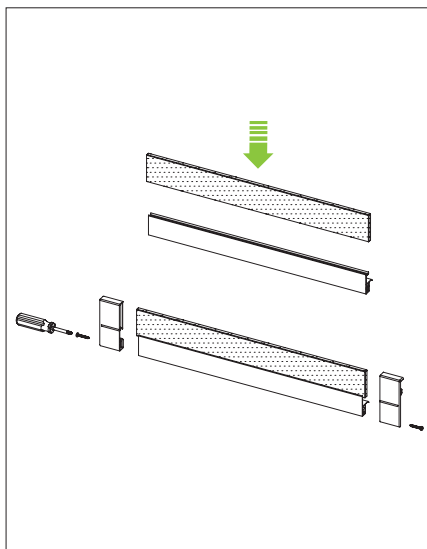
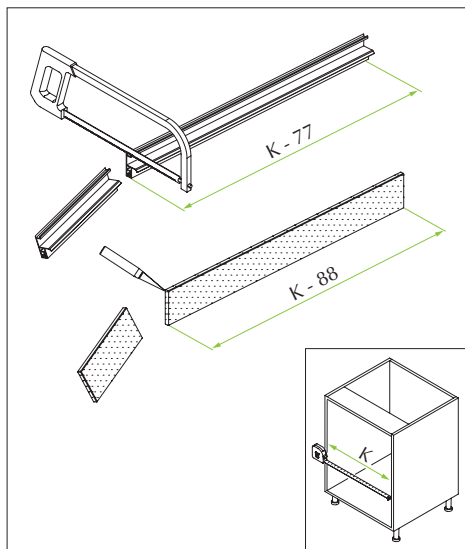




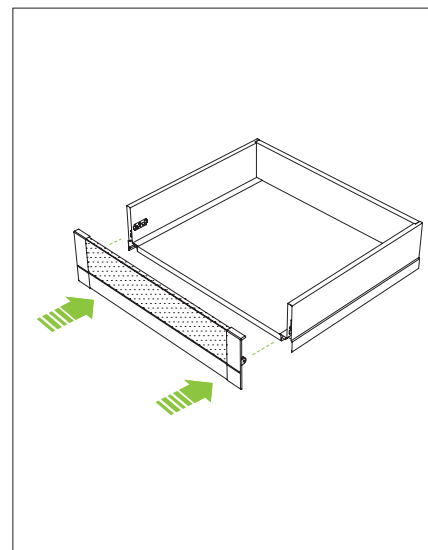
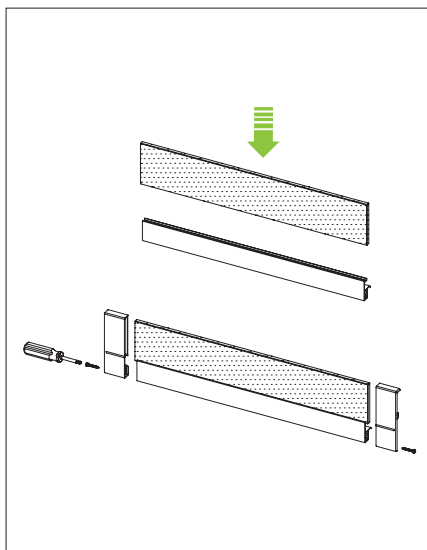
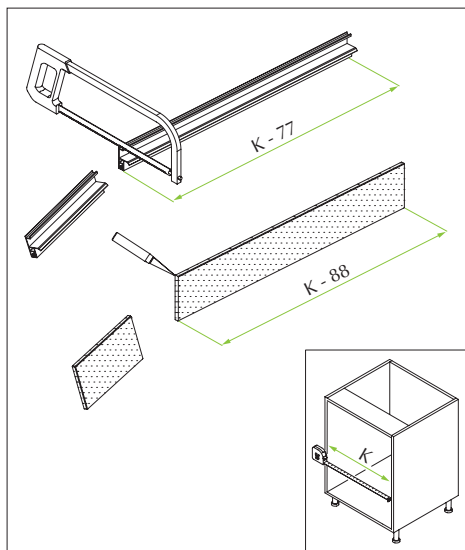
Instructions for use

IN internal drawer assembly sequence – Crystal profile

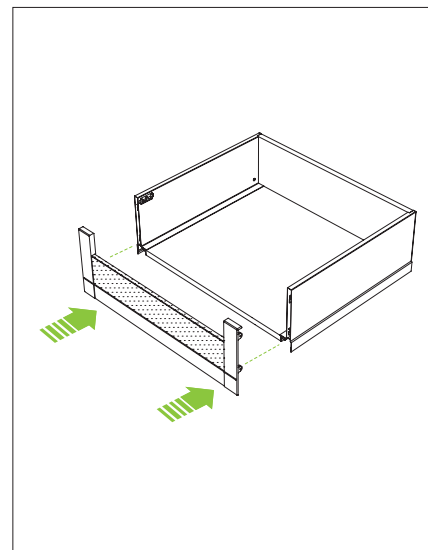
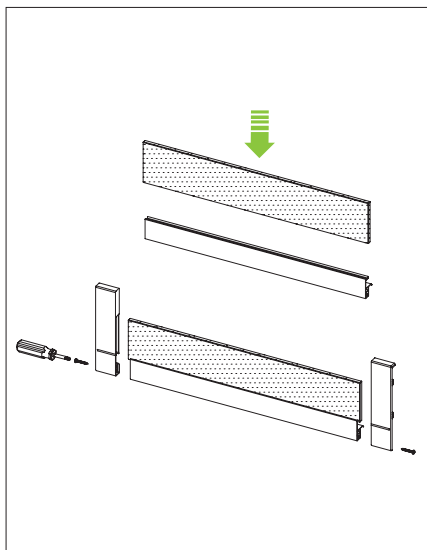
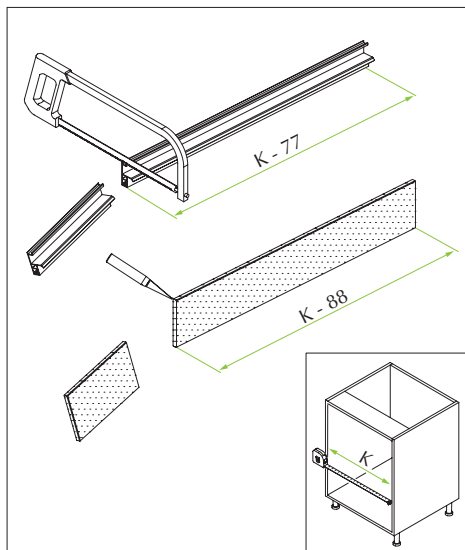
Drawer H90



Drawer H120

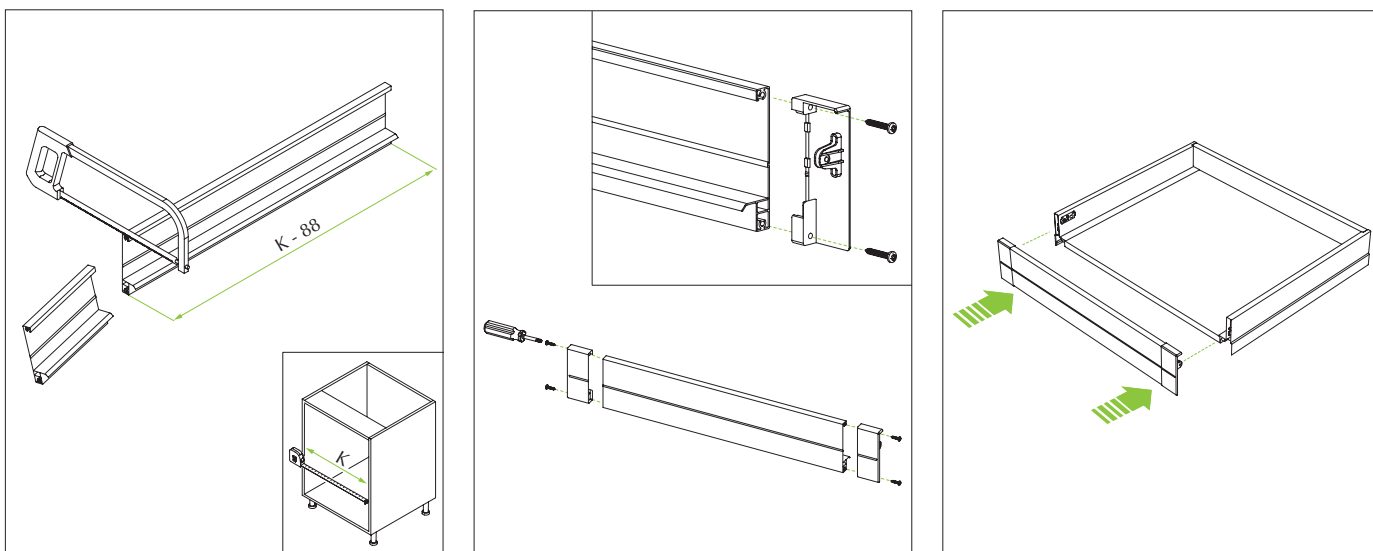


Drawer H180

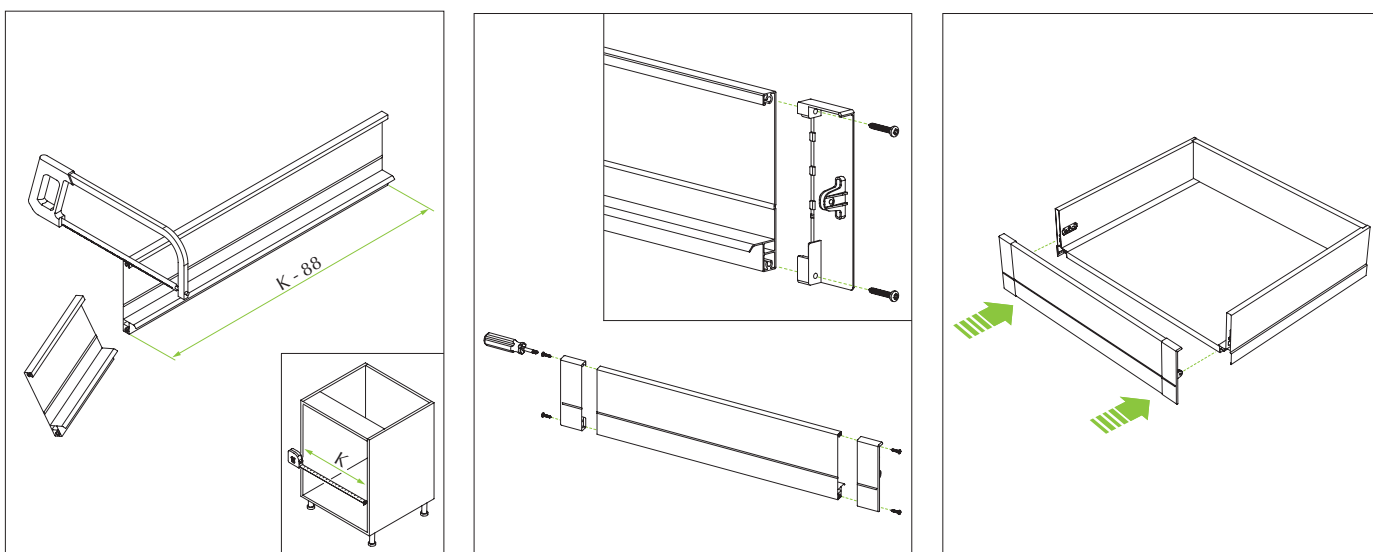


IN internal drawer assembly sequence - Aluminium profile

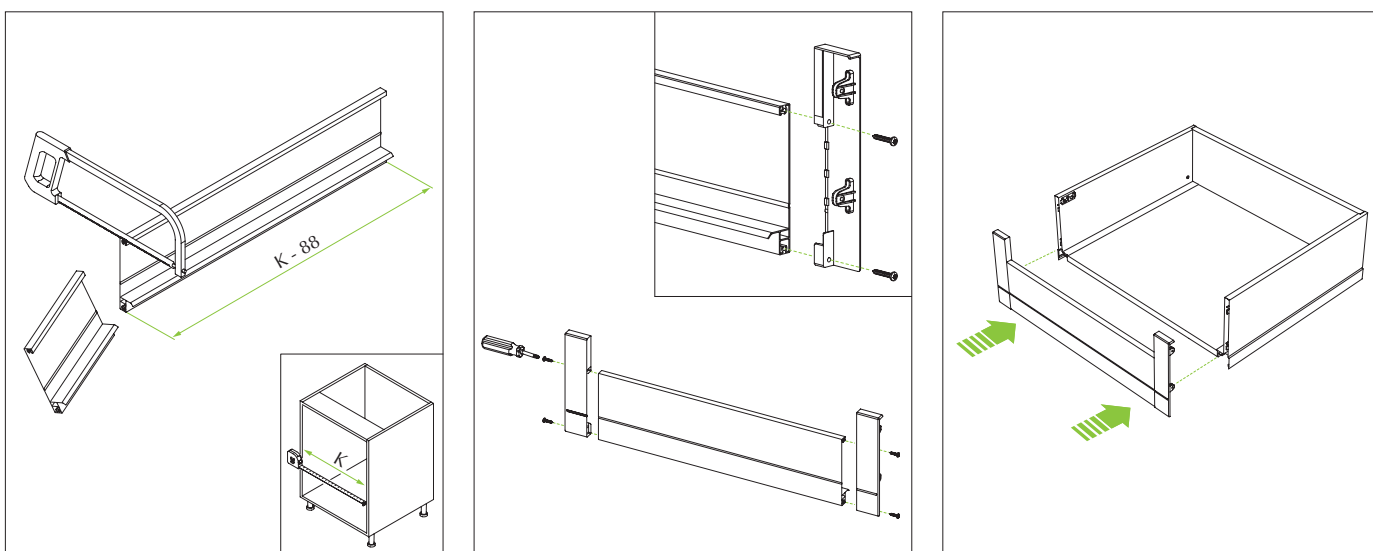
Drawer H90



Drawer H120



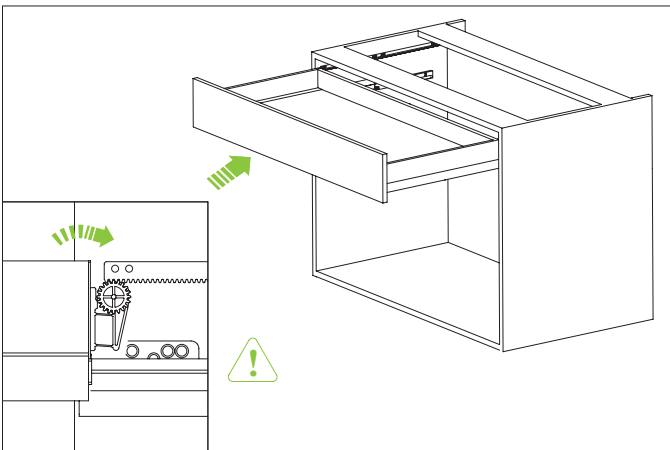
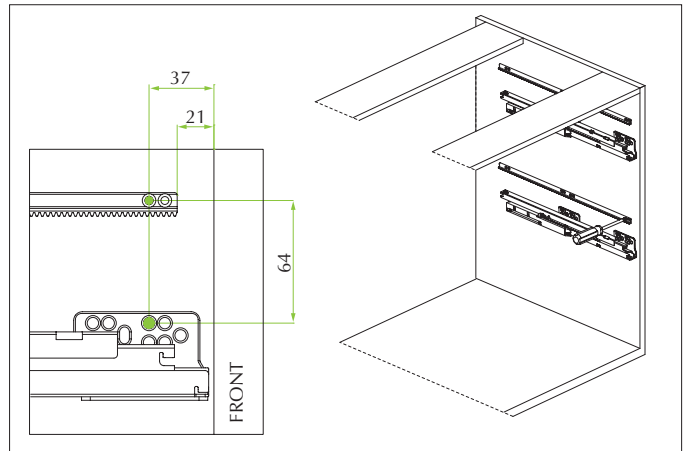
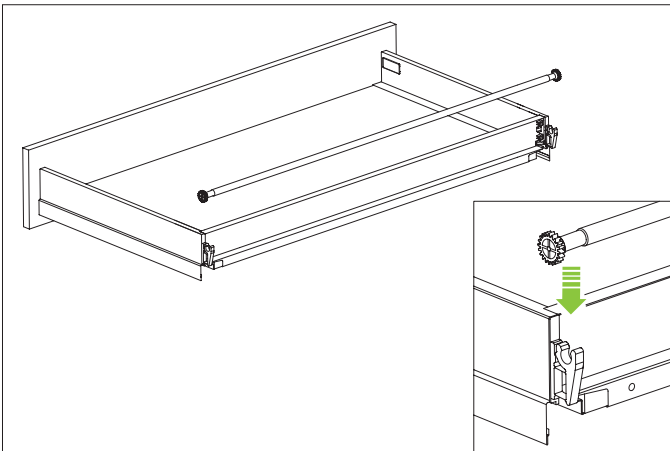
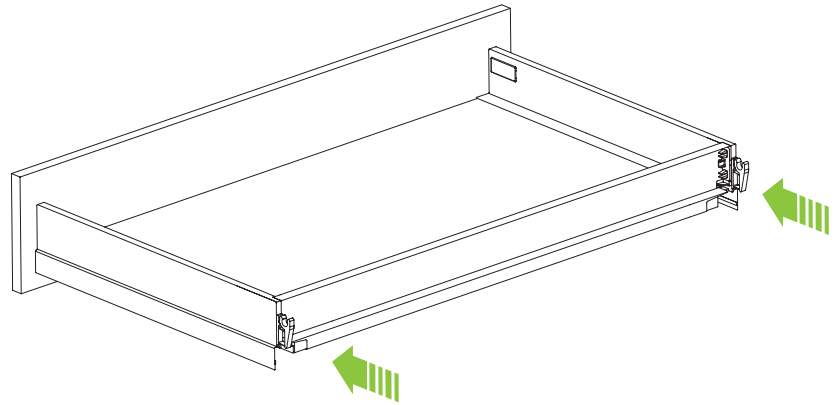
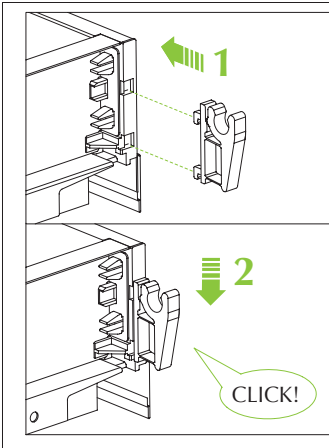
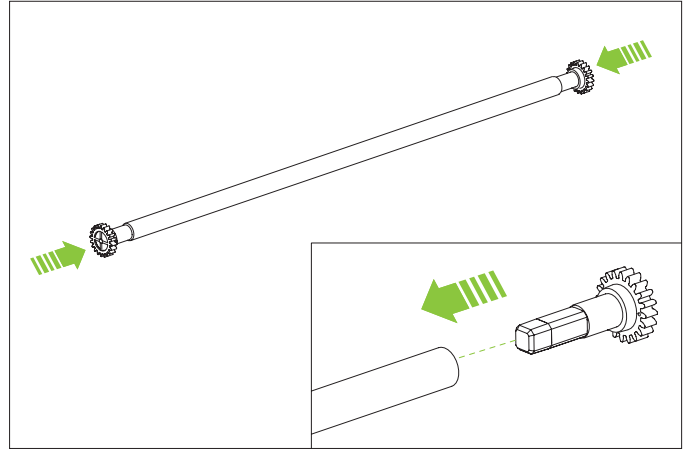
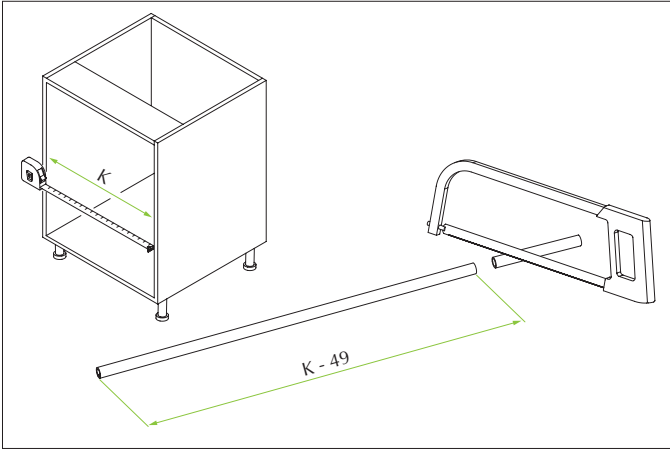
Drawer H180

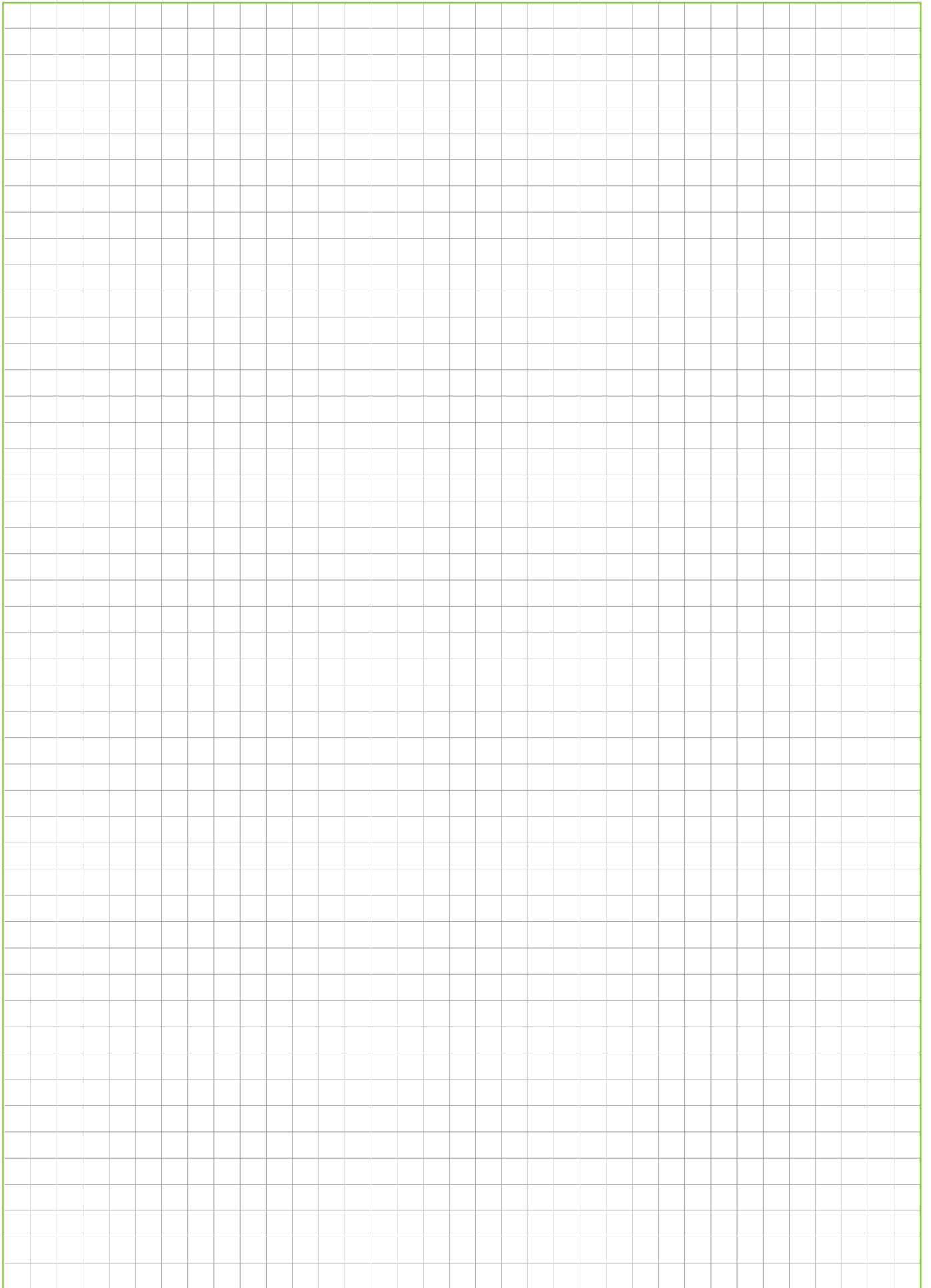




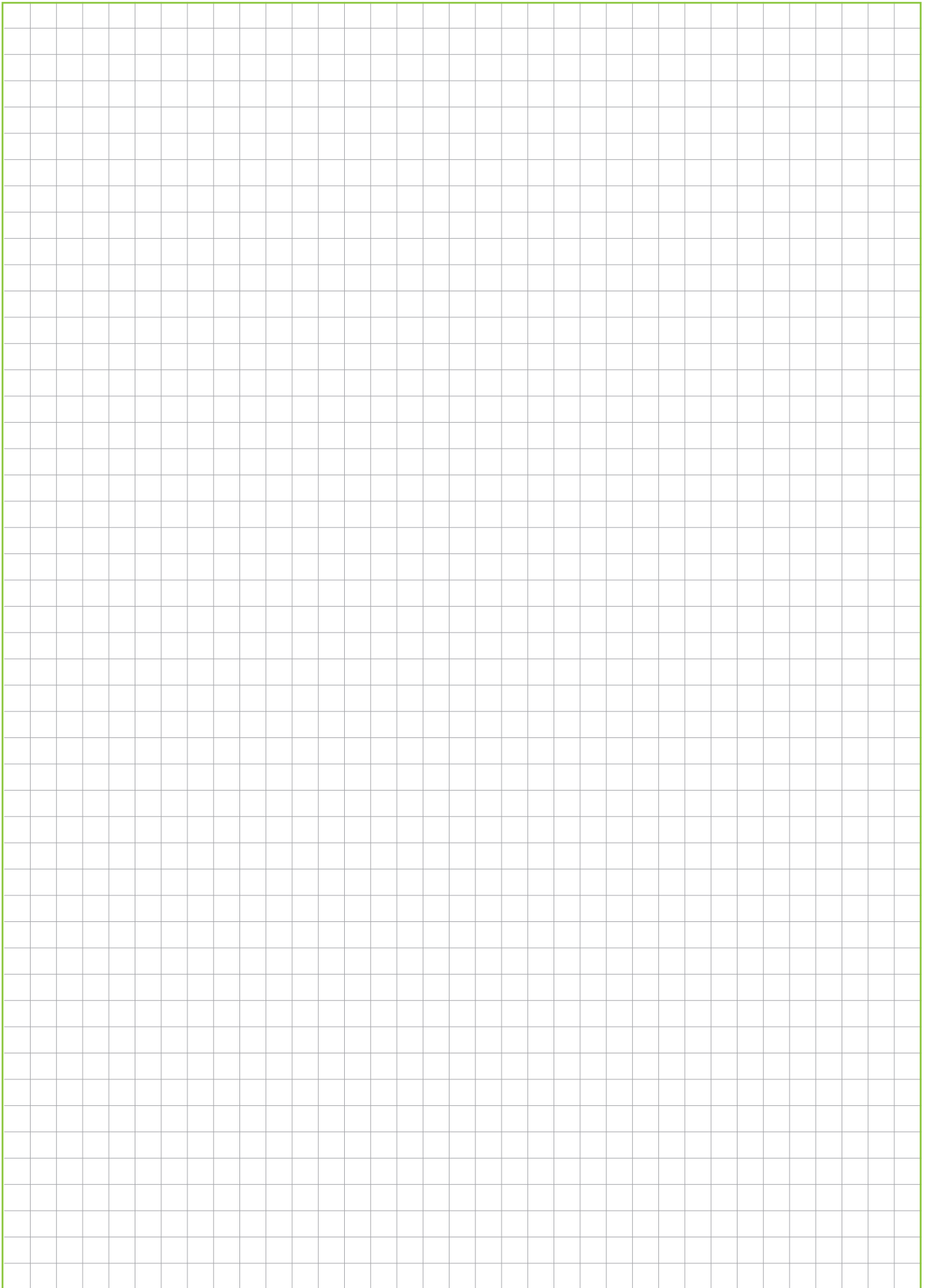
Instructions for use

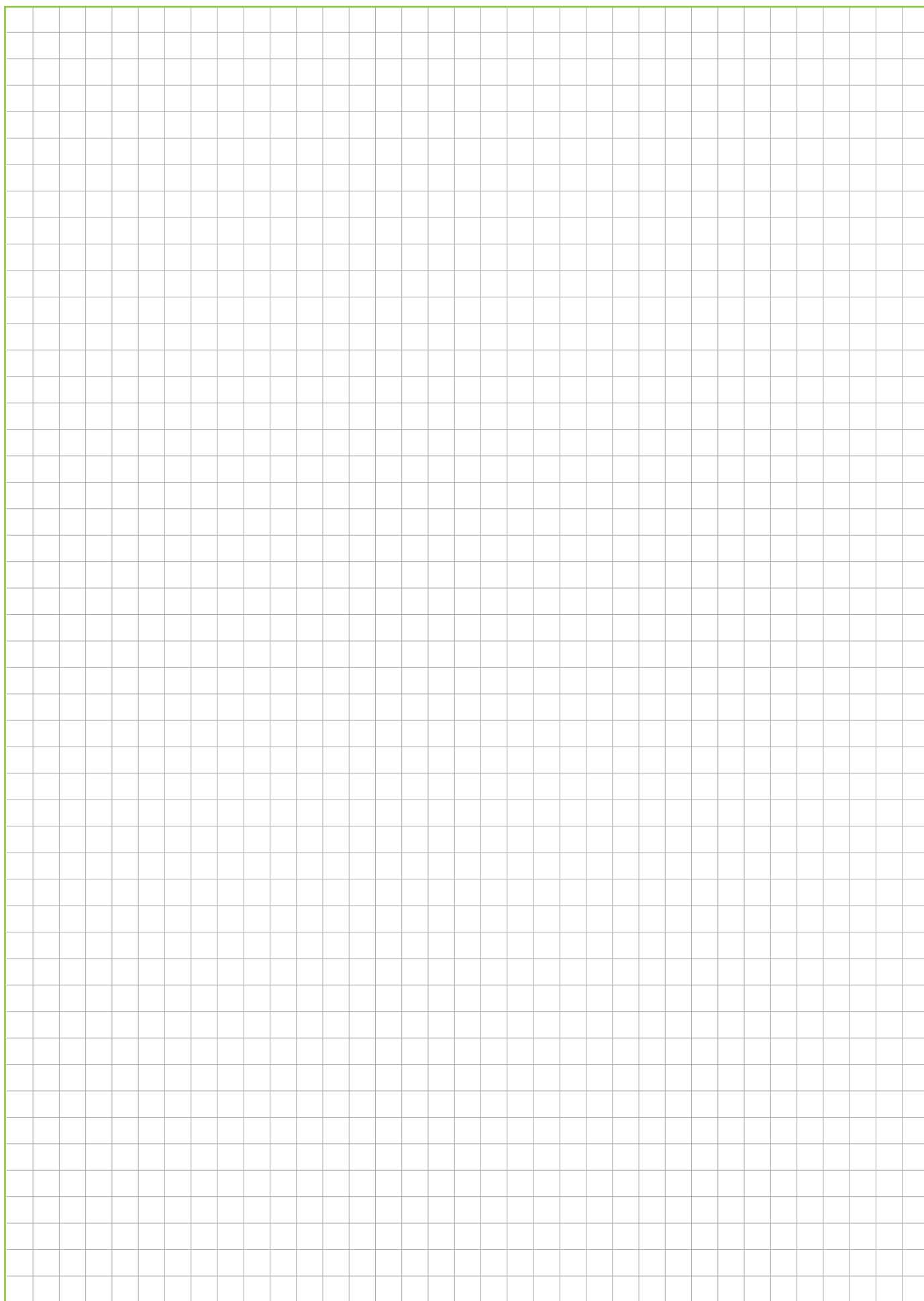
Stabilizer Kit assembly sequence





Notes






FORMENTI & GIOVENZANA S.p.A.

Via Concordia, 16
20837 Veduggio con Colzano (MB) - ITALY
Tel. +39 0362 947.1 r.a. - Fax +39 0362 998788
info@fgv.it
www.fgv.it

FGV SLOVAKIA, Spol s r.o.

Partizánska cesta 73, P.O.BOX 87
957 01 Bánovce nad Bebravou - SLOVAKIA
Tel. +421 (0) 38 7626 100 - Fax +421 (0) 38 7626 105
info@fgv.sk

FGVTN BRASIL LTDA.

Rua Francisco Derosso, 1352
Curitiba Paraná 81710 000 - BRASIL
Tel. +55 41 2107 4411 - Fax +55 41 3275 3038
fgvtn@fgvtn.com.br - www.fgvtn.com.br

FGV ASIA Limited

Unit 1602, 16/F., Metropolis Tower
10 Metropolis Drive, Hunghom,
Kowloon, Hong Kong - P.R.CHINA
Tel. +852 2762 1534 - Fax +852 2648 7389
info@fgvasia.com - www.fgvasia.com

FGV (Guangzhou) Company Limited

Units 2710-2711, Yang Cheng International Trading Centre
East Tower, Ti Yu Dong Lu, No. 122
Guangzhou - P R CHINA
Tel. +86 20 38870570 - Fax +86 20 38870323
info@fgvchina.com - www.fgvchina.com

DEUTSCHE FGV Formenti & Giovenzana Möbelbeschläge GmbH

Industriestr. 44
D-33397 Rietberg - GERMANY
Tel. +49 (0) 5244-9708-0 - Fax +49 (0) 5244-9708-15
www.fgvgermany.com

FORMENTI & GIOVENZANA POLSKA Sp. z o.o.

Ul. Boleslawiecka 8a
98-400 Wieruszów - POLAND
Tel. +48 62 58 10 400 - Fax +48 62 58 10 480
www.fgvpolska.pl

FGV UKRAINE TOB

Вул. Черновола 39
08132 Вишневе, Київська обл., Україна
Тел. +38 044 333 56 23
Факс +38 044 333 56 24
info@fgv.kiev.ua

FGV SERVICE VENETO S.r.l.

Via Pietro Bassani, 12
33170 Pordenone (PN) - ITALY
Tel. +39 0434 572728
info@fgvserviceveneto.com

FGV SERVICE CENTRO-SUD

Via Massimo d'Antona, 6i
60033 Chiaravalle (AN) - ITALY
Tel. +39 071 7451125 - Fax +39 071 7496441
infocentrosud@fgvservice.com