



CANMADE

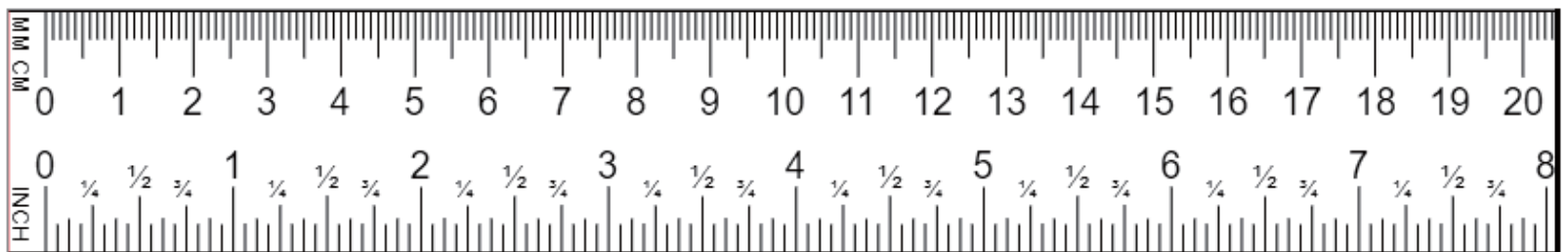


TABLE OF CONTENTS

OUR BRANDS	1
DECORATIVE HARDWARE	
Canmade selections	2
Atlas, Top Knobs, Elements, and Jeffrey Alexander	13
FUNCTIONAL HARDWARE	
Decorative Hinges and Lifts	17
Hinges	18
Sugatsune Hardware	20
Slides	21
Slides and Sliding Door Accessories	26
ORGANIZATION AND OPTIMIZATION	
Starax Organizers	27
Cabinet Organizers	32
Waste and Recycling	33
Closet and Laundry Accessories	37
Jewelry Trays	40
Wall Beds	41
Bathroom Organizers	42
WOOD PRODUCTS	
Dovetail Drawers and Moldings	43
Legs and Onlays	44
Corbels	45
Posts	49
DOORS, DRAWERS AND PANELS	
European Doors	51
Aluminum Doors	53
Polyester Doors	54
Wood Doors	55
Wire Mesh and Glass Inserts	56
Drawers and Panels (Glass Looking, Acrylic and Matt Looking)	57
EDGBANDING, COVERS AND REPAIRS	
PVC Edgebanding	59
Melamine and Veneer Edgebanding	60
Peel and Stick Cover Caps, Fillers and Crayons	61
LIGHTING AND ELECTRICAL PRODUCTS	
Lighting and Power Bars	63
Battery Operated LED Lighting	66
ACCESSORIES AND FASTENERS	
Scilm Accessories	67
Locks, File Holders, Gromets, Legs, Castors and Brackets	69
Miscellaneous Parts	74
Bits and Screws	76
ADHESIVES	
Tensor Contact Adhesives	79
General Adhesives	80
SANDPAPER	81
NOTES	83
POLICIES AND PROCEEDURES	84

MILLIMETERS AND INCHES

	FRACTIONS									
	0	1/16	1/8	1/4	3/8	1/2	5/8	3/4	7/8	15/16
0	0	1.6	3.2	6.4	9.5	12.7	16	19	22	23.8
1	25.4	27	29	32	35	38	41	44	48	49
2	51	52	54	57	60	64	67	70	73	75
3	76	78	79	83	86	89	92	96	98	100
4	102	103	105	108	111	114	117	121	124	125
5	128	129	130	133	137	140	143	146	149	151
6	152	154	156	159	162	165	168	171	175	176
7	178	179	181	184	187	191	194	197	200	202
8	203	205	206	210	213	216	219	222	225	227
9	229	230	232	235	238	241	244	248	251	252
10	254	256	257	260	264	267	270	273	276	278
11	279	281	283	286	289	292	295	298	302	303
12	305	306	308	311	314	318	321	324	327	329
13	330	332	333	337	340	343	346	349	352	354
14	356	357	359	362	365	368	371	375	378	379
15	381	383	384	387	391	394	397	400	403	405
16	406	408	410	413	416	419	422	425	429	430
17	432	433	435	438	441	445	448	451	454	456
18	457	459	460	464	467	470	473	476	479	481
19	483	484	486	489	492	495	498	502	505	506
20	508	510	511	514	518	521	524	527	530	532
21	533	535	537	540	543	546	549	552	556	557
22	559	560	562	565	568	572	575	578	581	583
23	584	586	587	591	594	597	600	603	606	608
24	610	611	613	616	619	622	625	629	632	633
25	635	637	638	641	645	648	651	654	657	659
26	660	662	664	667	670	673	676	679	683	684
27	686	687	689	692	695	699	702	705	708	710
28	711	713	714	718	721	724	727	730	733	735
29	737	738	740	743	746	749	752	756	759	760
30	762	764	765	768	772	775	778	781	784	786



This chart is to give an understanding of converting the sizes between Inches and Millimeters. You can use this chart when working with our Handles, Hinges and Slides.

OUR BRANDS

hardware
resources[®]

JEFFREY ALEXANDER[®]
by Hardware Resources

ELEMENTS[®]
by Hardware Resources

atlas
HOMEWARES

TASK
lighting

TK | TOP
KNOBS

CEMUX
LIVE YOUR LIFE

STARAX[®]

FGV | FORMENTI &
GIOVENZANA

A+

scilm[®]

**on
trend**TM
cabinet doors

SUGATSUNE

KV
KNAPE & VOGT

OLON

B
BARAZIN

AARKOPA

Akfix[®]

Tensor
Adhesives That Outperform

tece[®]

ROBERTSON
SCRUX
SCREWS

HERMES

Jowat
Adhesives

HMA194-84C
160mmCC



HMA194-84B
128mmCC

HMA194-84A
96mmCC

HMA194-25C
160mmCC



HMA194-25B
128mmCC

HMA194-25A
96mmCC



KM9225-84A
32mm x 23mmH



KM9225-50B
32mm x 23mmH



KM9225-25A
32mm x 23mmH

HM6416-50D
160mmCC



HM6416-25D
160mmCC



KM6404-50A
39mm x 28mmH



KM6404-25A
39mm x 28mmH



KM0992-95A
34mm x 28mmH



HM4075-50B
152mmCC



HM4076-25B
152mmCC



KM4081-50B
34mm x 27mm
28mmH



KM4081-25A
34mm x 27mm
28mmH



HANDLE DRILLING JIG

MP4184-15A
Drilling for 32mmCC to 320mmCC



HM4526-17G
256mmCC

HM4526-25G
256mmCC

HM4526-17D
160mmCC

HM4526-25D
160mmCC

HM4526-17C
128mmCC

HM4526-25C
128mmCC

HM6180-95C
128mmCC

KM0508-25B
20mm x 30mmH

KM0040-25B
22mm x 24mmH

KMB100-25B
29mm x 24mmH

KM0500-95A
32mm x 31mmH

HMH341-25E
192mmCC

HMH341-25D
160mmCC

HMH341-25C
128mmCC

HM3534-25B
96mmCC

HM3076-25B
128mmCC

HM2592-02B
96mmCC

2981SN
76mmCC



HM0839-17B
96mmCC

HM0839-25B
96mmCC (DN)

HM0839-25A
96mmCC (SN)



HM8461-25B
128mmCC

HM270A-25A
96mmCC



HM7150-25B
96mmCC

HM7150-50A
96mmCC



KM9227-50A
32mm x 30mmH



HM0692-25B
128mmCC

HM0692-09B
128mmCC



HM0840-17A
96mmCC



HM0840-17D
96mmCC



HM0840-95B
96mmCC



HM0840-09B
96mmCC



HM0840-95C
128mmCC



KM2083-17A
32mm x 31mmH



KM2083-08A
32mm x 31mmH



KM2083-09B
32mm x 31mmH



KM1953-25B
37mm x 20mm x 23mmH



KM0385-17A
30mm x 28mmH



KM0385-95A
30mm x 28mmH



KM0385-09B
30mm x 28mmH



HM1372-17B
96mmCC



HM3045-17D
96mmCC



HM3045-25B
96mmCC



HM3045-09A
96mmCC



HM3138-25B
96mmCC



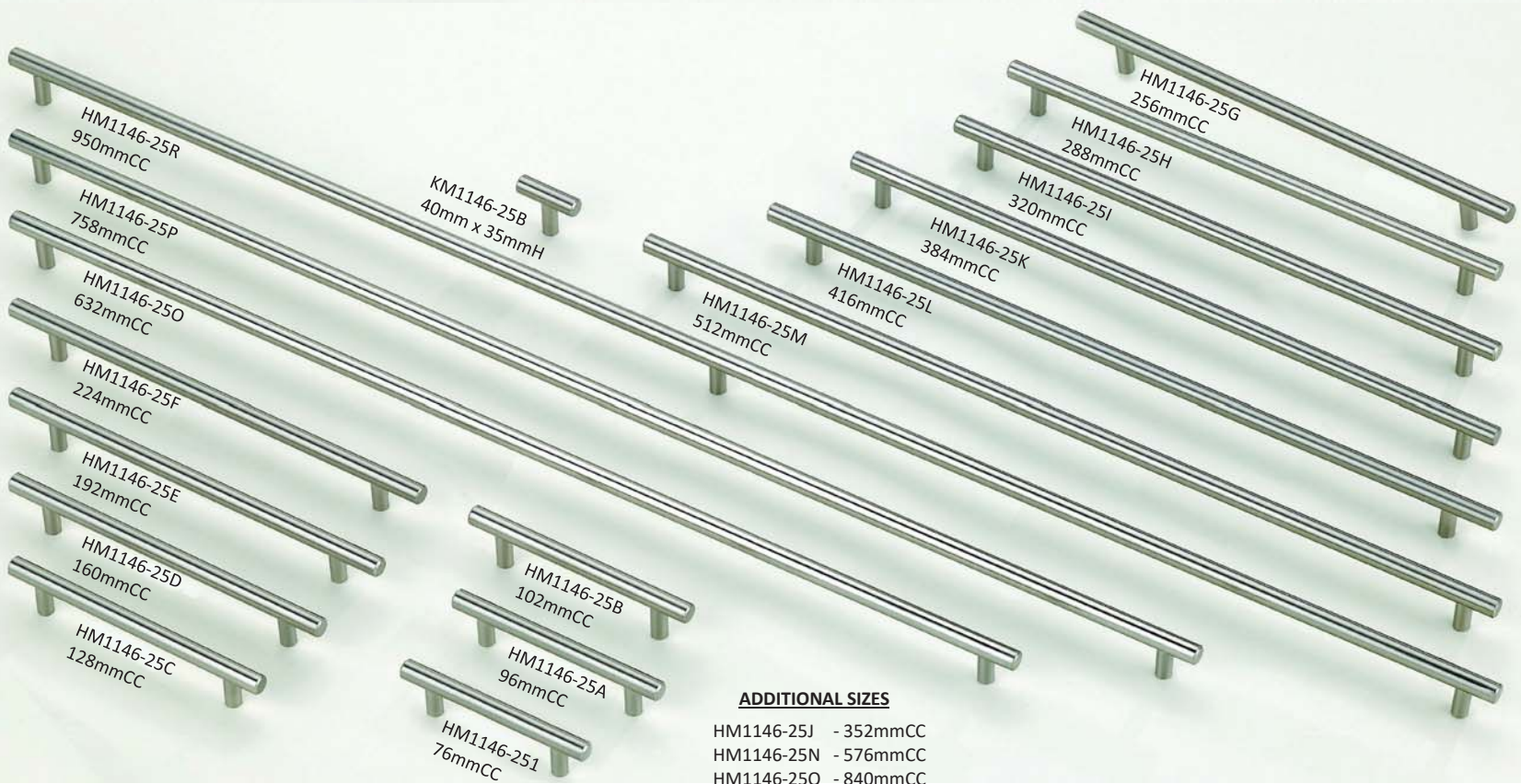
HM3138-09A
96mmCC

HM2971-50B1
96mmCC

HM2971-25B
128mmCC

HM2971-25C
177mmCC

HM2971-17A1
96mmCC



HM1146-25R
950mmCC

HM1146-25P
758mmCC

HM1146-25O
632mmCC

HM1146-25F
224mmCC

HM1146-25E
192mmCC

HM1146-25D
160mmCC

HM1146-25C
128mmCC

KM1146-25B
40mm x 35mmH

HM1146-25B
102mmCC

HM1146-25A
96mmCC

HM1146-25I
76mmCC

HM1146-25M
512mmCC

HM1146-25L
416mmCC

HM1146-25K
384mmCC

HM1146-25I
320mmCC

HM1146-25H
288mmCC

HM1146-25G
256mmCC

ADDITIONAL SIZES

- HM1146-25J - 352mmCC
- HM1146-25N - 576mmCC
- HM1146-25Q - 840mmCC





HM0683-17A
96mmCC



KMA402-17A
25mm x 15mmH



HMA194-17A
128mmCC



HM0683-25B
96mmCC



KMA402-25B
25mm x 15mmH



HMA194-25B
128mmCC



HM0683-95A
96mmCC



KM0574-95A
27mm x 19mmH



HMA194-95A
128mmCC



HM0065-95A
76mmCC



HM0683-33A
96mmCC



KM0574-33A
27mm x 19mmH



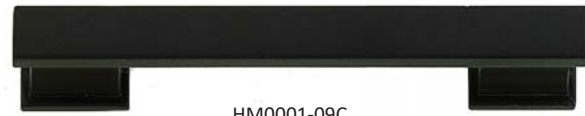
HM0065-33A
76mmCC



KM0002-09C
32mm x 26mmH



HM0002-09C
102mmCC



HM0001-09C
102mmCC



KM0001-09C
37mm x 19mm
26mmH



KM0002-95A
32mm x 26mmH



HM0002-95A
102mmCC



HM0001-95A
102mmCC



KM0001-95A
37mm x 19mm
26mmH



KM0002-17A
32mm x 26mmH



HM0002-17A
102mmCC



HM0001-17A
102mmCC



KM0001-17A
37mm x 19mm
26mmH



HM0001-08B
102mmCC



KM0001-08B
37mm x 19mm x 26mmH

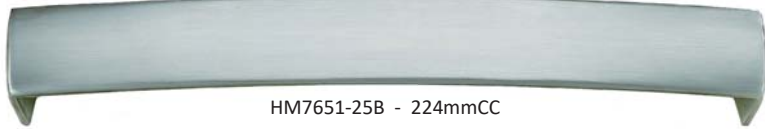
KM8103-25B
32mm x 25mmH



HM7653-25B - 160mmCC



HM7652-25B - 192mmCC



HM7651-25B - 224mmCC



HM7681-25B - 192mmCC



HM7682-25B - 160mmCC



HM7683-25B - 128mmCC



HM7683-25B - 96mmCC



KM8721-25B
18mm x 28mmH

KM8103-17A
32mm x 25mmH



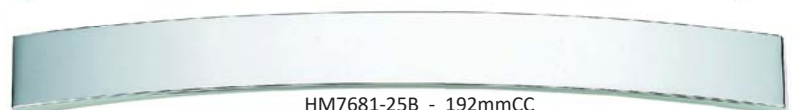
HM7653-25B - 160mmCC



HM7652-25B - 192mmCC



HM7651-25B - 224mmCC



HM7681-25B - 192mmCC



HM7682-25B - 160mmCC



HM7683-25B - 128mmCC



HM7683-25B - 96mmCC

KM6081-25B
30mm x 27mmH



KM0040-17B
18mm x 28mmH



KM2083-25B
32mm x 31mmH



HMA017-25B1
96mmCC



HM7061-25B
96mmCC



HMA017-25B
128mmCC



HM7052-25B
96mmCC



HM0446-25B
128mmCC



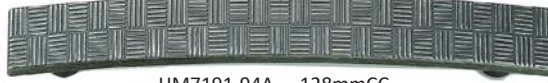
HM3940-25B
64mmCC



KM8192-94A
30mm x 22mmH



HM7192-94A - 96mmCC



HM7191-94A - 128mmCC



KM8192-50A
30mm x 22mmH



HM7192-50A - 96mmCC



HM7191-50A - 128mmCC



HM7492-94A - 96mmCC



KM8491-94A
35mm x 30mm
22mmH



HM7492-50A - 96mmCC



KM8491-50A
35mm x 30mm
22mmH



HM7194-94A - 128mmCC



HM7194-50A - 128mmCC



KM8581-94A
34mm x 23mmH



HM7582-94A - 96mmCC



KM8581-50A
34mm x 23mmH



HM7582-50A - 96mmCC



HM7581-94A - 128mmCC



HM7581-50A - 128mmCC



HM7562-94A - 96mmCC



KM8561-94A
33mm x 21mm
25mmH



HM7562-50A - 96mmCC



KM8561-50A
33mm x 21mm
25mmH



HM7561-94A - 128mmCC



HM7561-50A - 128mmCC



KM8192-25A
30mm x 22mmH



HM7192-25A - 96mmCC



HM7191-25A - 128mmCC



KM8192-33A
30mm x 22mmH



HM7192-33A - 96mmCC



HM7191-33A - 128mmCC



HM7492-25A - 96mmCC



KM8491-25A
35mm x 30mm
22mmH



HM7492-33A - 96mmCC



KM8491-33A
35mm x 30mm
22mmH



HM7194-25A - 128mmCC



HM7194-33A - 128mmCC



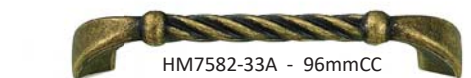
KM8581-25A
34mm x 23mmH



HM7582-25A - 96mmCC



KM8581-33A
34mm x 23mmH



HM7582-33A - 96mmCC



HM7581-25A - 128mmCC



HM7581-33A - 128mmCC



HM7562-25A - 96mmCC



KM8561-25A
33mm x 21mm
25mmH



HM7562-33A - 96mmCC



KM8561-33A
33mm x 21mm
25mmH



HM7561-25A - 128mmCC



HM7561-33A - 128mmCC



HMA445-09A
76mmCC



HMA445-50A
76mmCC



HMA445-25B
76mmCC



HMA445-50B
76mmCC



HMA445-33A
76mmCC



HMA445-43A
76mmCC



HMA445-95A
76mmCC



KM0698-09A
24mm x 25mmH



KM0698-50A
24mm x 25mmH



KM0698-25B
24mm x 25mmH



KM0698-50B
24mm x 25mmH



KM0698-33A
24mm x 25mmH



KM0698-43A
24mm x 25mmH



KM0698-95A
24mm x 25mmH



HM0743-09A
64mmCC



HM0743-50A
64mmCC



HM0743-25B
64mmCC



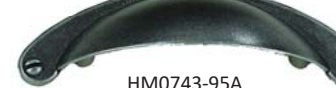
HM0743-50B
64mmCC



HM0743-33A
64mmCC



HM0743-43A
64mmCC



HM0743-95A
64mmCC



KM2557-02B
55mm x 18mm



KM3294-02A
30mm x 29mmH



KM3294-02A
30mm x 29mmH



G-2125-02A
(RIGHT)
G-2126-02A
(LEFT)



HM3247-09B - 56mmCC



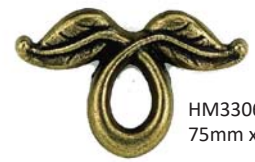
KM2461-33A
30mm x 20mmH



KM2664-33A
29mm x 25mmH



HM3305-33A
96mmCC



HM3306-33A
75mm x 47mm



KM2557-02A
64mm x 25mm



HM3219-02A
65mm x 25mm



KM2558-02A
35mm x 48mmH



HM2554-02A
96mmCC



HM3245-09B
76mmCC



HM2648-09A
96mmCC



HM3247-02A
56mmCC



HM2112-02B
128mmCC



HM4587-02A
89mmCC



KM6081-09A
30mm x 27mmH



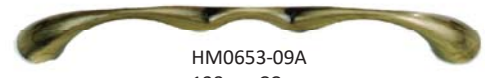
KMA038-09B
26mm x 26mmH



KM3409-09A
25mm x 25mmH



KM2007-09A
27mm x 25mmH



HM0653-09A
128mmCC



HMA029-09A
128mmCC







FULCRUM



BRONTE



THIN SQUARE



CRYSTAL



CENTINEL



STAINLESS STEEL



ELIZABETH



TABLEAU



DISTRESSED



AUSTEN



DAP



ANGLED DROP

SPECIAL ORDER ITEMS. PLEASE VISIT WWW.ATLASHOMEWARES.COM FOR A COMPLETE LIST OF PRODUCTS.



SPECIAL ORDER ITEMS. PLEASE VISIT WWW.TOPKNOBS.COM FOR A COMPLETE LIST OF PRODUCTS.



MADISON



VERONA



ZACHARY



SLADE



HAMMOND



AIDEN



EDGEFIELD



GLENDALE



ASHER



COSGROVE



HADLY



KENNER

SPECIAL ORDER ITEMS. PLEASE VISIT WWW.HARDWARERESOURCES.COM FOR A COMPLETE LIST OF PRODUCTS.



BORDEAUX



BELLA



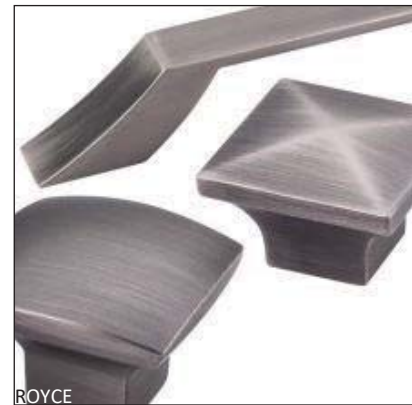
AMSDEN



ELLA



CAIRO



ROYCE



VALENCIA



CALLIE



MILAN



KEY LARGO

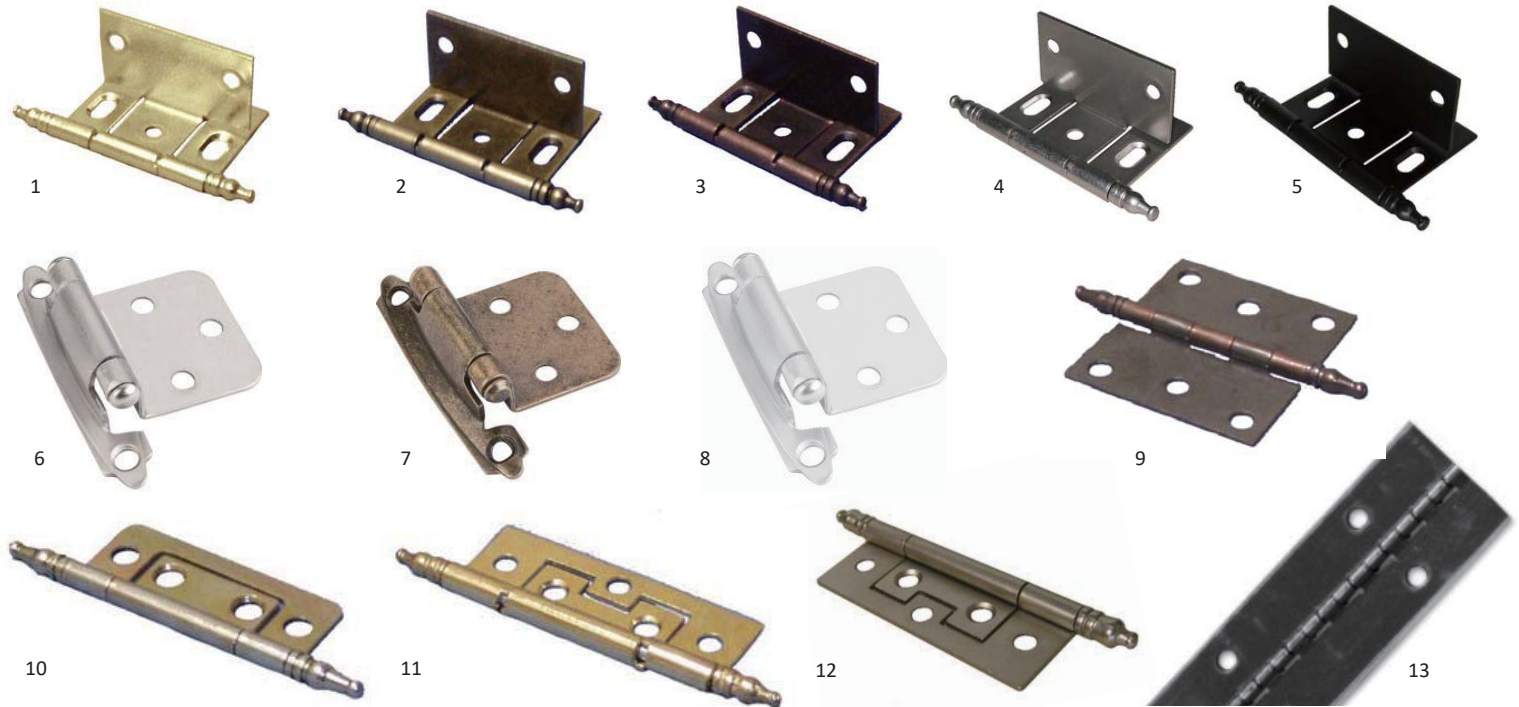


LILLE



MIRANDA

SPECIAL ORDER ITEMS. PLEASE VISIT WWW.HARDWARERESOURCES.COM FOR A COMPLETE LIST OF PRODUCTS.



DECORATIVE AND GLASS HINGES					
1	GM5433LC08A	BRASS 2" HINGE FOR 7/8" DOOR	7	GM0006SC09A	ANTIQU BRASS SELF CLOSING HINGE
2	GM5433LC09A	LIGHT ANTIQUE BRASS 2" HINGE FOR 7/8" DOOR	8	GM0006SC34A	WHITE SELF CLOSING HINGE
3	GM5433LC43A	ANITQUE COPPER 2" HINGE FOR 7/8" DOOR	9	GM0305LC40A	STAT BRONZE BUTT HINGE WITH 6 HOLES
4	GM5433LC25B	NICKEL 2" HINGE FOR 7/8" DOOR	10	GM0315LS08P	YELLOW ZINC BUTT HINGE WITH DECO PIN
5	GM5433LC02A	BLACK 2" HINGE FOR 7/8" DOOR	11	GML540LC08A	BRIGHT BRASS NON-MORTISE HINGE WITH PIN
6	GM0006SC17A	BRIGHT NICKEL SELF CLOSING HINGE	12	GML540LC25B	DULL NICKEL NON-MORTISE HINGE WITH PIN
			13	ASSORTMENT OF PIANO HINGES IN BOTH SIZE AND COLOR	

Lifts



AEROLOFT - 590VLT9K					
K08	HEIGHT 350-400MM	2.6-3.5KG	L10	HEIGHT 450-580MM	4.7-5.9KG
K09	HEIGHT 350-400MM	3.6-4.7KG	L20	HEIGHT 450-580MM	6.0-7.6KG
K10	HEIGHT 380-500MM	4.8-6.0KG	L30	HEIGHT 450-580MM	7.7-9.2KG
K20	HEIGHT 380-500MM	6.1-7.6KG	L40	HEIGHT 450-580MM	9.3-11.6KG
K30	HEIGHT 380-500MM	7.7-9.8KG	M10	HEIGHT 550-660MM	5.3-6.6KG
K40	HEIGHT 380-500MM	9.9-11.4KG	M20	HEIGHT 550-660MM	6.7-7.9KG
K50	HEIGHT 380-500MM	11.5-14.6KG	M30	HEIGHT 550-660MM	8.0-10.3KG
590VB00A2000000			STABILIZATION BAR 200CM		

AEROWING LIFT	
595BVK050005000	37MM STANDARD CABINET DRILLING



GAS PISTON LIFT	
1240287	80 NEWTON
1240288	100 NEWTON
1240290	60 NEWTON



LID STAYS WITH PLASTIC CAP	
MBOB10LM34A	WHITE CAP
MBOB10LM03A	BROWN CAP

AEROSPLIT - 590VSPA9					
A10	HEIGHT 600MM	6.0-6.7KG	B40	HEIGHT 720MM	11.1-13.3KG
A20	HEIGHT 600MM	6.8-8.1KG	B50	HEIGHT 720MM	13.4-14.8KG
A30	HEIGHT 600MM	8.2-10.0KG	C10	HEIGHT 800MM	5.0-6.1KG
A40	HEIGHT 600MM	10.1-13.0KG	C20	HEIGHT 800MM	6.2-8.0KG
A50	HEIGHT 600MM	13.1-16.2KG	C30	HEIGHT 800MM	8.1-10.0KG
B10	HEIGHT 720MM	5.3-6.5KG	C40	HEIGHT 800MM	10.1-12.5KG
B20	HEIGHT 720MM	6.6-8.7KG	C50	HEIGHT 800MM	12.6-13.5KG
B30	HEIGHT 720MM	8.8-11.0KG	590VB00A2 - STABILIZATION BAR 200CM		



AEROPLUS	
590VPL050000000	MANY WEIGHT VARIATIONS

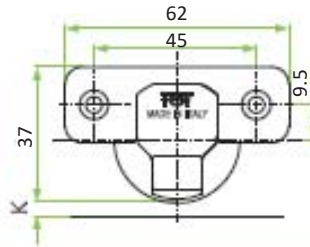


AEROBUS	
590VBSA9D200000	1.0-2.5KG 400MMH
590VBSA9D400000	2.4-5.5KG 400MMH



Optima Click

**Cup hole distance
45x9.5mm**



OPENING 110°



Crank 0



51XSH50500CA000
51XSH5P500C000
(PUSH OPEN)

51XH60500SA000

Crank 8



51XSH50508CA000

51XH60508SA000

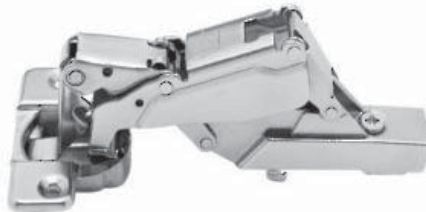
Crank 15



51XSH50515CA000

51XH60515SA000

OPENING 175°



Crank 0



51MWH5S500SS00

51MWH6S500SS00

FOR CORNER DOORS 110°



Angle 45°



51XSH50508CA000

51MH86M545SS00

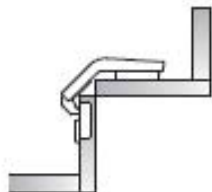
Angle 90°



51XSH50515CA000

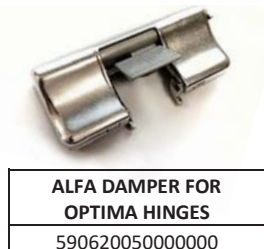
51MH860590SA00

FOR CORNER CABINET



51MH83M535CU0

51MH84M535SU0





1



2



3



4



5



6

SOFT CLOSE CLIP ON HINGES 45MM C.C. WITH DOWELS (ALSO AVAILABLE WITHOUT DOWELS)

1	51DSH60500S5000	110 ° FULL OVERLAY SOFT CLOSE	3	51DSH60515C5000	110 ° FULL INSET SOFT CLOSE	5	GMI081FG25E1	90 ° FULL INSET SOFT CLOSE
2	51DSH60508C5000	110 ° HALF OVERLAY SOFT CLOSE	4	GMI081FG25D1	45 ° FULL INSET SOFT CLOSE	6	GMI081FG25F1	165 ° FULL INSET SOFT CLOSE

ASSORTMENT OF PLATES TO GO WITH THE HINGES THAT WILL MEET ALL YOUR OVER OR IN LAY NEEDS



1



2



3

SOFT CLOSE FACE FRAME HINGES WITH DOWELS (ALSO AVAILABLE WITHOUT DOWELS)

1	5390-716	7/16" OVERLAY COMPACT HINGE	2	5392-000	1-1/2" OVERLAY COMPACT HINGE	3	5393-000	1-3/8" OVERLAY COMPACT HINGE
---	----------	-----------------------------	---	----------	------------------------------	---	----------	------------------------------



FACE FRAME AND MINI HINGES

51MZ6M51205550	SHORT ARM HINGE & PLATE WITH 8MM DOWELS	GM6011CM25B	SOFT CLOSING SHORT ARM HINGE & PLATE WITH CAM
----------------	---	-------------	---

MINI HINGE

GM1201LC25A	26MM SPACING MINI HINGE AND PLATE (PAIR)
-------------	--



1



2 & 3



4



PUSH OPEN HINGE

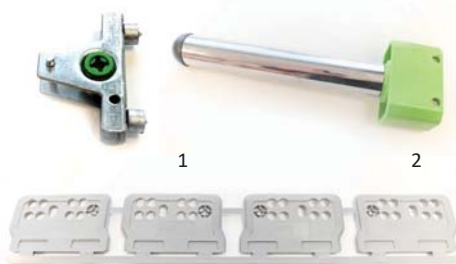
51XSH5P500C0000	0, 110, 45MM, DO DOWELS
51XSH6P500S0000	0, 110, 45MM, 8MM DOWELS

ONE TOUCH WITH MAGNET FOR PUSH OPEN HINGE

1	595420P610F00	ONE TOUCH DEVICE WITH MAGNET
2	5903370600A00	NICKEL ONE TOUCH GABLE MOUNTED PLATE
3	590337C600A00	GREY ONE TOUCH GABLE MOUNTED PLATE
4	595420P640000	LONG LATCH (40MM) ONE TOUCH DEVICE WITH MAGNET AND BASE



AVAILABLE FOR CUSTOM ORDER



3 & 4

TEN STANDARD KIT			
WHITE		GREY	
58XEAKF127XA000	270MM	58XEAKB627XA000	270MM
58XEAKF135XA000	350MM	58XEAKA635XA000	350MM
58XEAKF140XA000	400MM	58XEAKA640XA000	400MM
58XEAKF145XA000	450MM	58XEAKA645XA000	450MM
58XEAKF150XA0SB	500MM	58XEAKB650XA0SB	500MM
58XEAGF150XA000	180MMH 500MM	58XEAGB650XA0S0	180MMH 500MM
58XEAKF155XA000	550MM	58XEAKB650XA0SB	550MM

TEN RAILING SETS			
WHITE		GREY	
58RX03F12700000	270MM	58RX03A62700000	270MM
58RX03F13500000	350MM	58RX03A63500000	350MM
58RX03F14000000	400MM	58RX03A64000000	400MM
58RX03F14500000	450MM	58RX03A64500000	450MM
58RX03F15000000	500MM	58RX03A65000000	500MM
58RX03F15500000	550MM	58RX03A65500000	550MM

TEN IN DRAWER RAILING SETS			
58RX04F14500000	450MM	58RX04S64500000	450MM
58RX04F15000000	500MM	58RX04S65000000	500MM

TEN STEEL AND GLASS SIDE PANELS			
WHITE		GREY	
58SXM0F14500000	STEEL 450MM	58SXM0A64500000	STEEL 450MM
58SXM0F15000000	STEEL 500MM	58SXM0A65000000	STEEL 500MM
58SXVCF14500000	GLASS 450MM	58SXVCS64500000	GLASS 450MM
58SXVCF15000000	GLASS 500MM	58SXVCS65000000	GLASS 500MM

TEN IN INTERNAL DRAWER BRACKETS			
WHITE		GREY	
58AX40F10000A00	STANDARD	58AX40S60000A00	STANDARD
58AX4RF10000A00	FOR RAILS	58AX4RS60000A00	FOR RAILS

FRONT PANELS FOR TEN IN DRAWER			
WHITE		GREY	
58PX4AF11081B00	1081MM	58PX4AA61081B00	1081MM

TEN BACK FIXING BRACKETS FOR WOODEN BACK PANEL			
WHITE		GREY	
58AXPAF10000B00	90MMH	58AXPAA60000B00	90MMH
58AXPAF1U000B00	90MMH TOP OPEN	58AXPAA6U000B00	90MMH TOP OPEN
58AXPCF10000B00	150MMH	58AXPCA60000B00	150MMH
58AXPSF10000B00	180MMH	58AXPSA60000B00	180MMH
58AXPSF1U000B00	180MMH TOP OPEN	58AXPS16U000B00	180MMH TOP OPEN

TEN TOOLS	
1	A0X1000000000 TEN MARKING TOOL FOR FRONT FIX
2	A0X0000000000 TEN FRONT FIX INSTAL TOOL
3	58XSF006010000A TEN 1MM SPACERS 4 PIECES SET (GREY)
4	58XSF006030000A TEN 3MM SPACERS 4 PIECES SET (GREY)

Uniset



UNISET DRAWERS 53MM, 117MM & 200MM HEIGHT	
580551C1500000	UNISET DRAWER H53 500MM
580710C150H0000	UNISET DRAWER H117 500MM
580950C150G0000	UNISET DRAWER H200 500MM

UNISET DRAWERS 85MM HEIGHT	
580610C127H0000	UNISET DRAWER H85 270MM
580610C135H0000	UNISET DRAWER H85 350MM
580610C140H0000	UNISET DRAWER H85 400MM
580610C145H0000	UNISET DRAWER H85 450MM
580610C150H0000	UNISET DRAWER H85 500MM
580610C155H0000	UNISET DRAWER H85 550MM

UNISET DRAWERS 150MM HEIGHT	
580810C127H000F	UNISET DRAWER H150 270MM
580810C135H000F	UNISET DRAWER H150 350MM
580810C140H000F	UNISET DRAWER H150 400MM
580810C145H000F	UNISET DRAWER H150 450MM
580810C150H000F	UNISET DRAWER H150 500MM
580810C155H000F	UNISET DRAWER H150 550MM

RAILING SET FOR UNISET DRAWER			
580TLA0140000	RAILING SET 400MM EASYFIX	580TLB0140000	RAILING SET 400MM SCREW ON
580TLA0145000	RAILING SET 450MM EASYFIX	580TLB0145000	RAILING SET 450MM SCREW ON
580TLA0150000	RAILING SET 500MM EASYFIX	58TLB0150000	RAILING SET 500MM SCREW ON
580TLA0155000	RAILING SET 550MM EASYFIX	58TLB0155000	RAILING SET 550MM SCREW ON



ZETA SLOWMOTION DAMPER & CONNECTOR BRACKETS FOR UNISET DRAWERS		
1	59072D01Z0X00C1	ZETA SLOWMOTION SCREW ON
2	59072D01Z0XE0C1	ZETA SLOWMOTION WITH EUROSCREWS
3	5803AP0500000	BACK RAILING BRACKET
4	425KPF7600H0000	UNISET H BRACKET WITH DOWELS
5	425KPF7500H0000	UNISET H BRACKET SCREW ON
6	DRILLING JIG FOR H BRACKET	

Unibox



VERSATILE AND RELIABLE

- NEW GENERATION OF WHEEL DESIGN
- LONG SELF CLOSING FEATURE FOR SECURE AND CONTROLLED CLOSING
- SMALL EXTRACTION LOSS DUE TO COMPACT BUILD
- EXCELLENT LOAD ABILITY WITH 25KG STANDARD CAPACITY

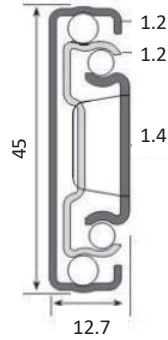
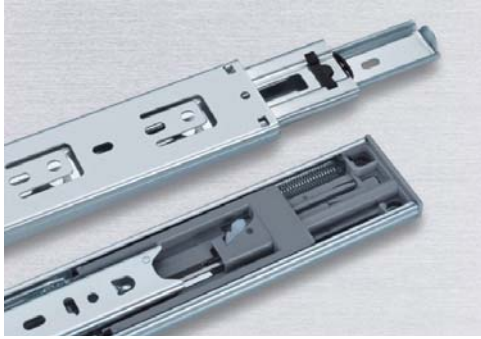


UNIBOX DOUBLE WALL DRAWER	
58S610C135H1000	UNIBOX DRAWER H85 350MM (WHITE) 1 DAMPER
58S610C140H1000	UNIBOX DRAWER H85 400MM (WHITE) 1 DAMPER
58S610C145H1000	UNIBOX DRAWER H85 450MM (WHITE) 1 DAMPER
58S610C150H1000	UNIBOX DRAWER H85 500MM (WHITE) 1 DAMPER
58S610C150H2000	UNIBOX DRAWER H85 500MM (WHITE) 2 DAMPERS
58S610C155H1000	UNIBOX DRAWER H85 550MM (WHITE) 1 DAMPER

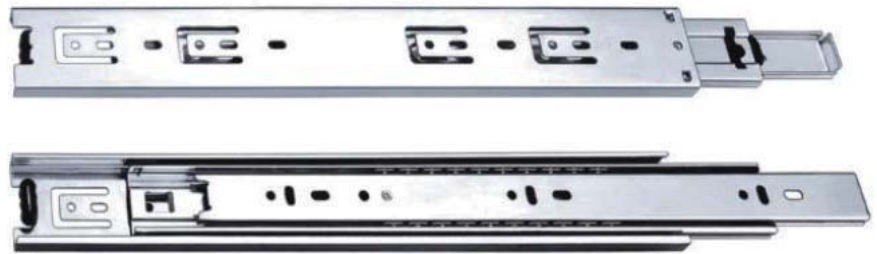
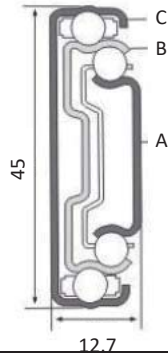


EXCEL UNDERMOUNT CLIP	
54565B0GCLIP1	2 WAY CLIP

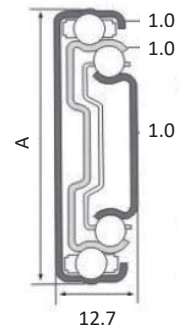
EXCEL UNDERMOUNT SOFT CLOSE SLIDE WITH 6 WAY ADJUSTMENT	
40KG LOADING CAPACITY	
54565B0725X0000	6 WAY ADJUSTMENT 250MM
54565B0730X0000	6 WAY ADJUSTMENT 300MM
54565B0735X0000	6 WAY ADJUSTMENT 350MM
54565B0740X0000	6 WAY ADJUSTMENT 400MM
54565B0745X0000	6 WAYADJUSTMENT 450MM
54565B0750X0000	6 WAY ADJUSTMENT 500MM
54565B0755X0000	6 WAY ADJUSTMENT 550MM



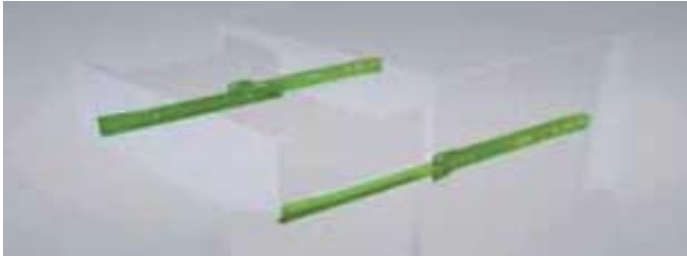
FULL EXT. BALL BEARING SOFT CLOSE SLIDES - 45KG LOADING CAPACITY						
CODE	LENGTH	CODE	LENGTH	CODE	LENGTH	STEEL MATERIAL ZINC PLATED
93345Z330N01	300MM (12")	93345Z345N01	450MM (18")	93345Z360N01	600MM (24")	
93345Z335N01	350MM (14")	93345Z350N01	500MM (20")	93345Z365N01	650MM (26")	
93345Z340N01	400MM (16")	93345Z355N01	550MM (22")	93345Z370N01	700MM (28")	



FULL EXT. BALL BEARING SLIDES - 45KG LOADING CAPACITY														
CODE	LENGTH	A	B	C	TRAVEL	FINISH	CODE	LENGTH	A	B	C	TRAVEL	FINISH	NOTE
93345Z025T01	250MM (10")	1.5	1.2	1.2	1"OT	ZINC	93345Z050T01	500MM (20")	1.5	1.2	1.2	1"OT	ZINC	STEEL MATERIAL OT = OVER TRAVEL
93345Z030T01	300MM (12")	1.5	1.2	1.2	1"OT	ZINC	93345Z055T01	550MM (22")	1.5	1.2	1.2	1"OT	ZINC	
93345Z035T01	350MM (14")	1.5	1.2	1.2	1"OT	ZINC	93345Z060T01	600MM (24")	1.5	1.2	1.2	1"OT	ZINC	
93345Z040T01	400MM (16")	1.5	1.2	1.2	1"OT	ZINC	93345Z065T01	650MM (26")	1.5	1.2	1.2	1"OT	ZINC	
93345Z045T01	450MM (18")	1.5	1.2	1.2	1"OT	ZINC	93345Z070T01	700MM (28")	1.5	1.2	1.2	1"OT	ZINC	
93345Y040U06CM	400MM (16")	1.2	1.2	1.2	2"UT	BLACK	93345Y045U06DM	450MM (18")	1.2	1.2	1.2	2"UT	BLACK	UN-ASSEMBLED STEEL MATERIAL UT = UNDER TRAVEL
93345Y040U06DM	400MM (16")	1.2	1.2	1.2	2"UT	BLACK	93345Y055U06CM	550MM (22")	1.2	1.2	1.2	2"UT	BLACK	
93345Y045U06CM	450MM (18")	1.2	1.2	1.2	2"UT	BLACK	93345Y055U06DM	550MM (22")	1.2	1.2	1.2	2"UT	BLACK	



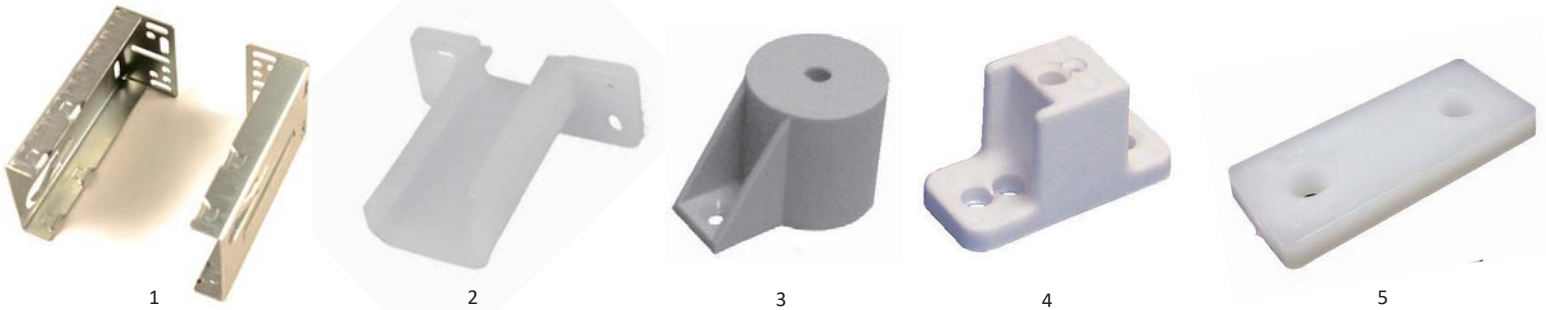
CODE	LENGTH	A	FINISH	NOTE
93335X033N01	330MM (13")	35MM	ZINC	35KG LOADING CAPACITY STEEL MATERIAL OT = OVER TRAVEL
93337X035N01	350MM (14")	37MM	ZINC	
93335X040N01	400MM (16")	35MM	ZINC	
93337X045N01	450MM (18")	37MM	ZINC	



COMFY SINGLE EXT. BOTTOM MOUNT ROLLER - 25KG LOADING CAPACITY

	SIZE		SIZE		SIZE		SIZE
5450820125010200	250MM	5450820135010200	350MM	5450820145010200	450MM	5450820155010200	550MM
5450820130010200	300MM	5450820140010200	400MM	5450820150010200	500MM	5450820160010200	600MM

SLIDE ACCESSORIES



MOUNTING BRACKETS/SPACERS

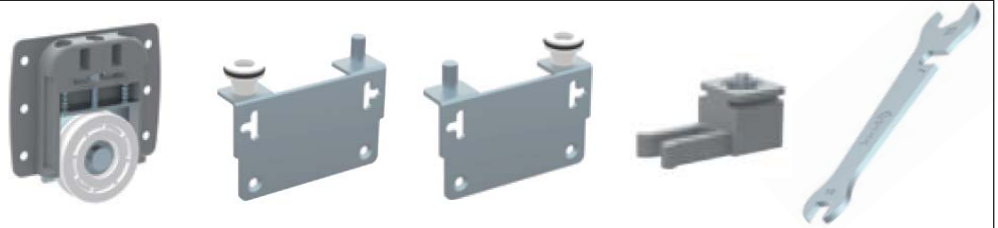
1	MM9453CM37A	METAL SOCKET FOR FULL EXTENSION SLIDE	4	MP1004SP34A	WHITE 32MM SPACER FOR METAL SLIDE
2	SP0741SC34A	REAR MOUNT BRACKET FOR SELF CLOSING SLIDE	5	MP5012MP34A	WHITE 1 x 2" PLASTIC MENDING PLATE
3	MP1003SP22A	GREY PLASTIC SPACER/SUPPORT			

SLIDING DOOR SYSTEM



SLIDING DOOR SYSTEM

L-1158	INCLUDES:									
	2	ROLLERS	1	RIGHT GUIDE	1	LEFT GUIDE	2	STOPPERS	1	WRENCH



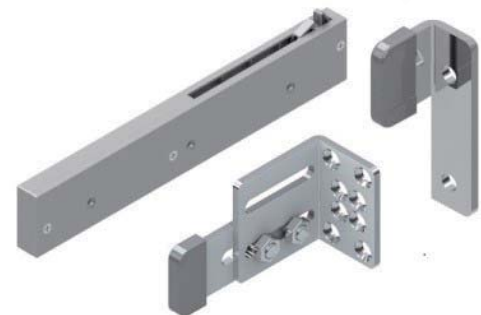
UPPER RAIL
L-3123-2 | 2.5METER RAIL



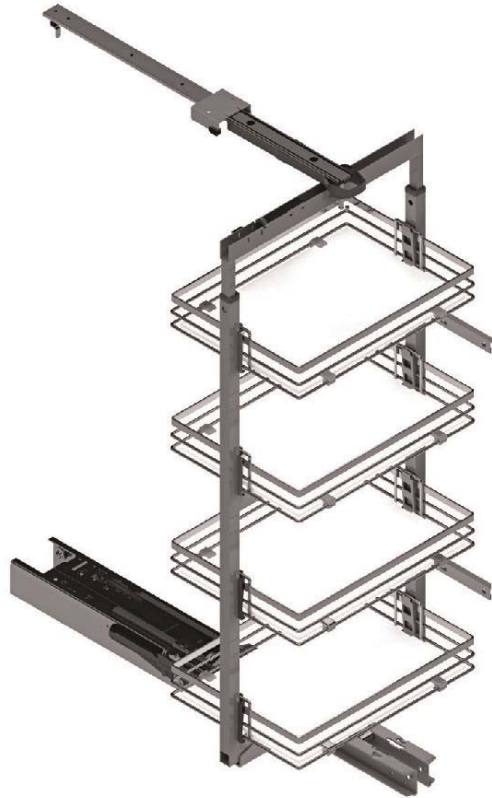
LOWER RAIL
L-3125-2 | 2.5METER RAIL



SLIDING DOOR HANDLE
L-3478 | 2.5METER RAIL



SLIDING DOOR SOFT CLOSE ADD ON
L-4109 | 1 COMPLETE SOFT CLOSE SET



SOFTCLOSING
SWIVELSYSTEM



TURNING LARDER UNIT WITH WOOD SHELF BASES (4,5 & 6 BASKETS)

	HEIGHT 1250 - 1400MM			HEIGHT 1550 - 1700MM			
	C (MM)	HEIGHT	SIZE	C (MM)	HEIGHT	SIZE	
4 BASKET	300	S-1719	230 X 500MM	6 BASKET	300	S-1731	230 X 500MM
	350	S-1720	280 X 500MM		350	S-1732	280 X 500MM
	400	S-1721	330 X 500MM		400	S-1733	330 X 500MM
	450	S-1722	380 X 500MM		450	S-1734	380 X 500MM
	500	S-1723	430 X 500MM		500	S-1735	430 X 500MM
5 BASKET	C (MM) HEIGHT 1850 - 2000MM						
	300	S-1743	230 X 500MM				
	350	S-1744	280 X 500MM				
	400	S-1745	330 X 500MM				
	450	S-1746	380 X 500MM				
	500	S-1747	430 X 500MM				



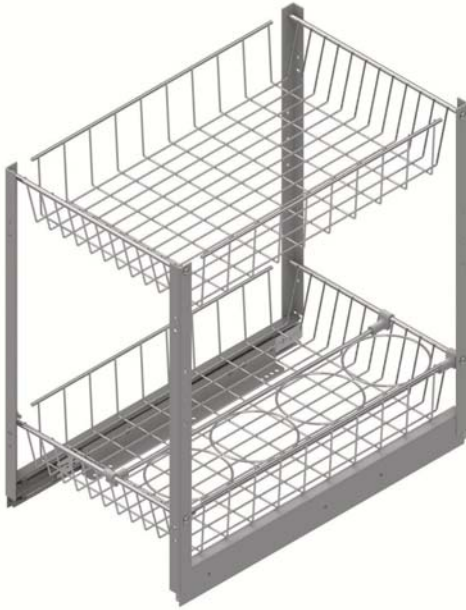
SOFTCLOSING



LARDER UNIT WITH WOOD SHELF BASES

	HEIGHT 1250 - 1400MM			HEIGHT 1550 - 1700MM			
	C (MM)	HEIGHT	SIZE	C (MM)	HEIGHT	SIZE	
4 BASKET	300	S-1841	230 X 500MM	6 BASKET	300	S-1853	230 X 500MM
	350	S-1842	280 X 500MM		350	S-1854	280 X 500MM
	400	S-1843	330 X 500MM		400	S-1855	330 X 500MM
	450	S-1844	380 X 500MM		450	S-1856	380 X 500MM
	500	S-1845	430 X 500MM		500	S-1857	430 X 500MM
5 BASKET	C (MM) HEIGHT 1850 - 2000MM						
	300	S-1865	230 X 500MM				
	350	S-1866	280 X 500MM				
	400	S-1867	330 X 500MM				
	450	S-1868	380 X 500MM				
	500	S-1869	430 X 500MM				

»»» **SOFTCLOSING**

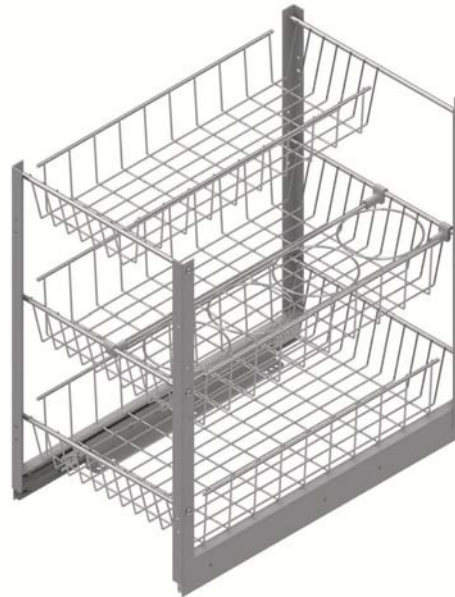


2 BASKET WITH BOTTLE HOLDER

C (MM)	W X D X H		
300	S-2100	210 X 500 X 520	
350	S-2101	260 X 500 X 520	
450	S-2103	360 X 500 X 520	

45 kg
100 lb

»»» **SOFTCLOSING**

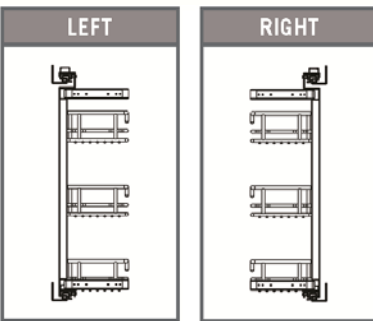


3 BASKET WITH BOTTLE HOLDER

C (MM)	W X D X H		
300	S-2120	210 X 500 X 520	
350	S-2121	260 X 500 X 520	
400	S-2122	310 X 500 X 520	
450	S-2123	360 X 500 X 520	
600	S-2126	510 X 500 X 520	

45 kg
100 lb

»»» **SOFTCLOSING**

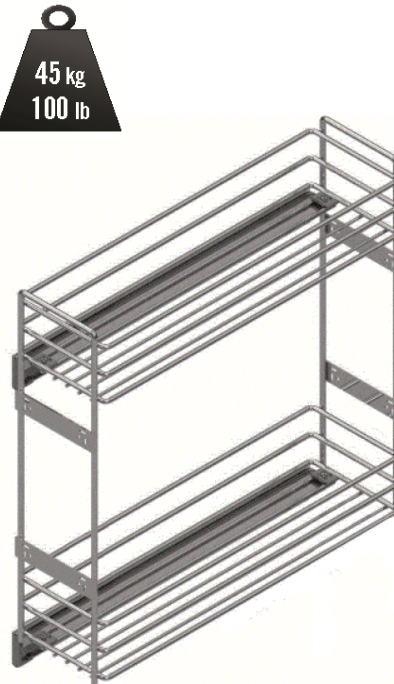


3 BASKET SIDE PULL OUT

C (MM)	L	R	W X D X H
250	S-2203	S-2204	205 X 470 X 635
300	S-2205	S-2206	255 X 470 X 635
300	S-2207	S-2208	260 X 470 X 635

30 kg
66 lb

»»» **SOFTCLOSING**

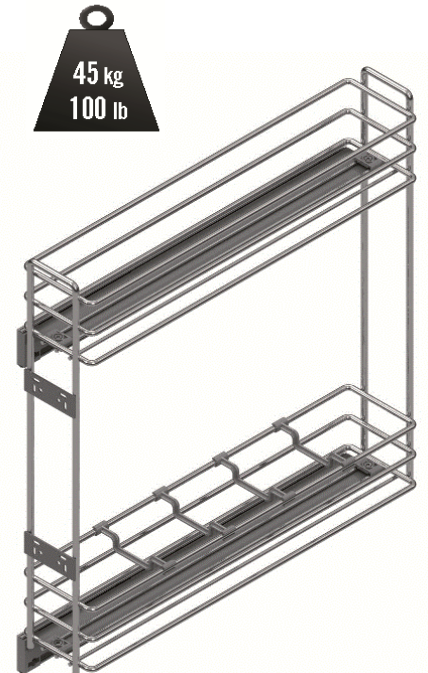


NARROW PULL OUT

C (MM)	W X D X H		
200	S-2213	153 X 470 X 470	
250	S-2214	205 X 470 X 470	

45 kg
100 lb

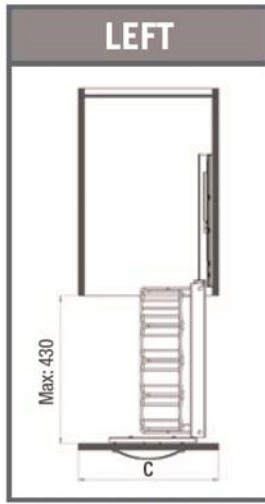
»»» **SOFTCLOSING**



SPICE RACK & BOTTLE HOLDER

C (MM)	W X D X H		
150	S-2211	108 X 470 X 470	

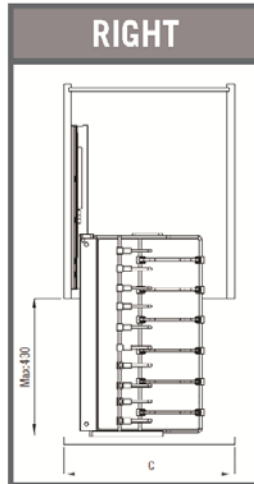
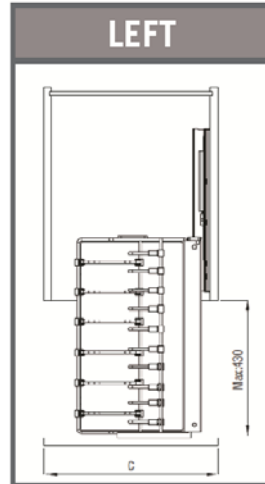
45 kg
100 lb



SOFTCLOSING



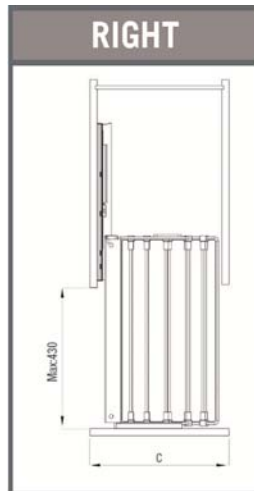
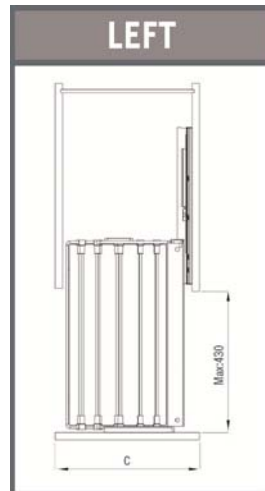
BOTTLE UNIT PULL OUT			
C (MM)	L	R	W X D X H
400	S-2181	S-2182	260 X 470 X 640



SOFTCLOSING



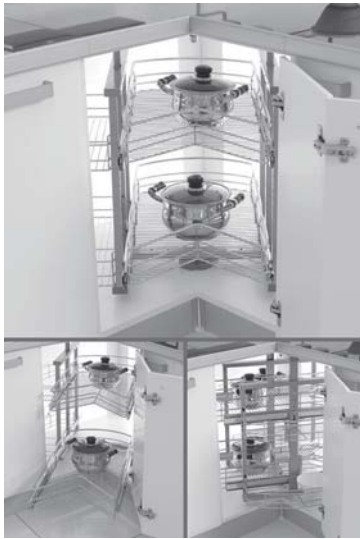
PAN HOLDER PULL OUT			
C (MM)	L	R	W X D X H
450	S-2880	S-2881	310 X 475 X 640



SOFTCLOSING



3 BASKET SIDE PULL OUT			
C (MM)	L	R	W X D X H
250	S-2898	S-2899	215 X 475 X 640
300	S-2894	S-2895	260 X 475 X 640
350	S-2890	S-2891	310 X 475 X 640



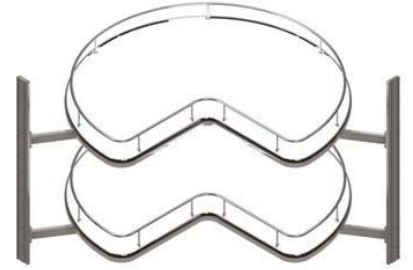
120 kg
264 lb



TURNING BASKET WITH RAILS
S-3041 | 800DIA X 640-760MM



40 kg
88 lb



3/4 TURNING BASKET ANTI SLIP
S-3052 | 750DIA X 600MM



40 kg
88 lb

KIDNEY "MAGIC CORNER"
W x D X H
S-3013 | LEFT 850 X 475 X 600MM
S-3014 | RIGHT 850 X 475 X 600MM



40 kg
88 lb

SOFTCLOSING



MAGIC CORNER
W x D X H
S-3001 | 860-965 X 530 X 530MM LEFT
S-3002 | 860-965 X 530 X 530MM RIGHT
S-3071 | 860-965 X 530 X 530MM LEFT
S-3072 | 860-965 X 530 X 530MM RIGHT



40 kg
88 lb

SOFTCLOSING

"MAGIC CORNER"
W x D X H
S-3091 | LEFT 780 X 480 X 600-900MM
S-3092 | RIGHT 780 X 480 X 600-900MM
S-3093 | LEFT 820 X 510 X 600-900MM
S-3094 | RIGHT 820 X 510 X 600-900MM



SOFTCLOSING

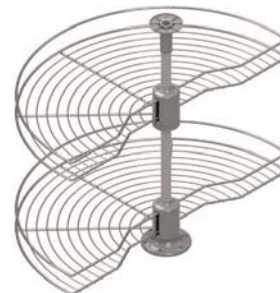
"MAGIC CORNER"
W x D X H
S-3067 | LEFT 700 X 510 X 560MM
S-3068 | RIGHT 700 X 510 X 560MM

30 kg
66 lb



60 kg
132 lb

WIRE KIDNEY LAZY SUSAN
S-3020 | 600DIA X 650-700MM
S-3021 | 740DIA X 650-700MM
S-3022 | 830DIA X 650-700MM

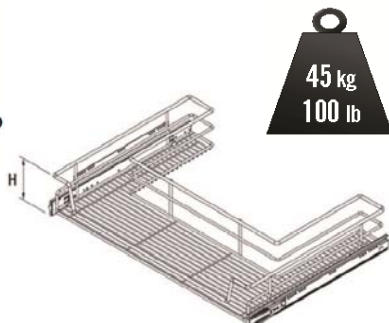
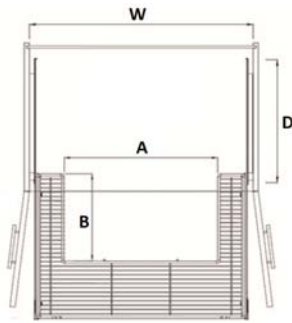


40 kg
88 lb

WIRE KIDNEY LAZY SUSAN
S-3011 | 740DIA X 650-700MM

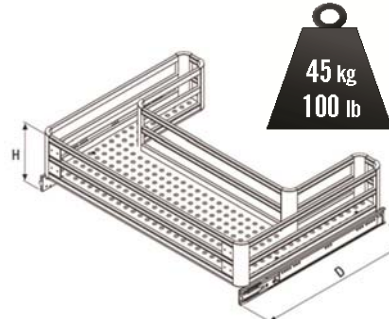
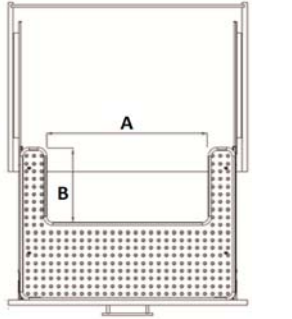


PLASTIC GREY CUTLERY TRAYS							
GREY	WHITE	BLACK	SIZE	GREY	WHITE	BLACK	SIZE
S-2281			250 X 490 X 55	S-2286	S-2655		490 X 490 X 55
S-2282			300 X 490 X 55	S-2287	S-2656	S-2676	540 X 490 X 55
S-2283	S-2652		340 X 490 X 55	S-2288	S-2657	S-2677	640 X 490 X 55
S-2284	S-2653		390 X 490 X 55	S-2289	S-2658	S-2678	740 X 490 X 55
S-2285	S-2654		440 X 490 X 55	S-2290	S-2659	S-2679	840 X 490 X 55



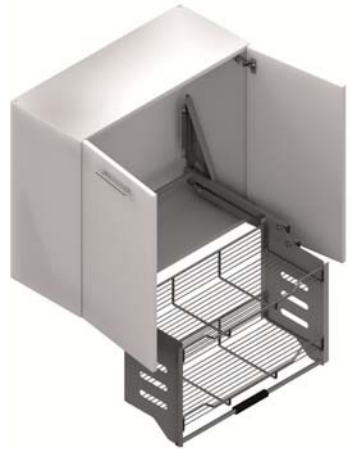
SOFTCLOSING

UNDER-SINK DRAWER						
C (MM)		W	D	H	A	B
800	S-2081	762-766	500	130	525	300
900	S-2082	862-866	500	130	625	300
800	S-2351	760-780	482	130	525	300
900	S-2352	860-880	482	130	625	300

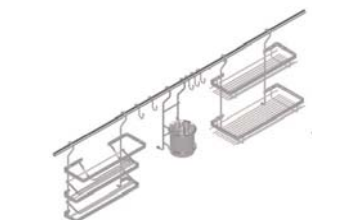


SOFTCLOSING

UNDER-SINK DRAWER						
C (MM)		W	D	H	A	B
900	S-2081	864	500	150	530	310



PULL DOWN SHELF WITH LIFT	
S-5181	564 X 300 X 550MM
S-5183	864 X 300 X 550MM



BACKSPASH RAIL KIT (MIDWAY SET)	
S-4500	13PCS ACCESSORIES SET



PLATE SHELF	
S-5301	560-570W X 270D X 110H



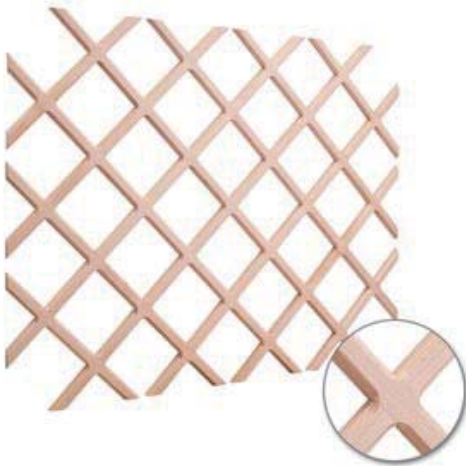
HANGING MIDWAY SET	
S-4111	1000W X 360D X 480H



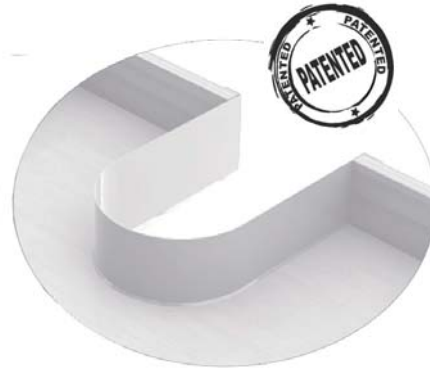
WHITE PLASTIC LAZY SUSANS	
MP022KAR34C	24" KIDNEY
MP022KAR34D	28" KIDNEY
MP022KFN34E	32" KIDNEY
MP022RAR34A	18" ROUND
MP022RAR34C	24" ROUND
MP022RAR34D	28" ROUND



TIPOUT TRAY	
WHITE	
TIPOUT-11	11" X 2" X 3"
TIPOUT-11S	11" X 1-9/16" X 3"
TIPOUT-14 (2SET/BOX)	14" X 2" X 3"
TIPOUT-14S (2SET/BOX)	14" X 1-9/16" X 3"



BEVELLED BOTTLE LATTICE RACK	
WR30-2	24" X 30" (WR30-NON BEVELLED)
WR45-2	25" X 45"
WR48-2	36" X 48"
ALDER - CHERRY - MAPLE - OAK	



U - BEND FOR UNDER SINK	
105-91-01-302	160 MMW X 245MMD X 86MMH-R80



PLASTIC WHITE CUTLERY TRAYS	
18"-21 1/2" DEPTH	
MP0030FN34A	7 1/4" - 9 3/4"W
MP0035FN34A	9 1/4" - 11 3/4"W
MP0040FN34A	11 1/4" - 13 3/4"W
MP0045FN34A	13 1/4" - 15 3/4"W
MP0050FN34A	15 1/4" - 17 3/4"W
MP0055FN34A	17 1/4" - 19 3/4"W
MP0060FN34A	19 1/4" - 21 3/4"W
UTILITY TRAYS 17"-21 3/4" DEPTH	
MP0040AR34A	11 1/4" - 13 3/4"W
MP0050AR34A	15 1/4" - 17 3/4"W
MP0055AR34A	17 1/2" - 19 3/4"W
MP0060AR34A	19 1/4" - 21 3/4"W



TRAY DIVIDER		
1.	TD3	11-3/4" X 22-1/4" X 16"
2.	MMTD18WHFNB	18 1/4"H X 19 3/4"D
	MMTD12WHFNA	12 1/4"H X 19 3/4"D



U - BEND DRAIN COVER TRAY FOR 400MM CABINET		
1	105-91-20-302	400MMW X 322MMD X 55MMH
2	105-91-21-302	400MMW X 322MMD X 55MMH



SPICE RACK 18"-21 1/2" DEPTH	
MP5021AR34A	52" - 21 1/2"W

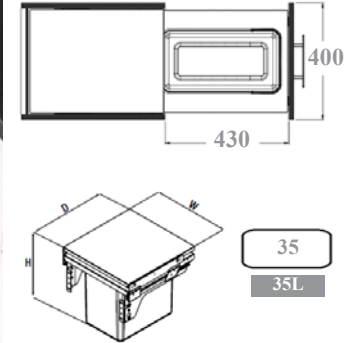
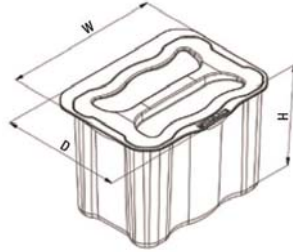


CUTLERY DRAWER INSERT	
DO14	14-5/8" X 22" X 1-3/4"
DO20	20-7/8" X 22" X 1-3/4"



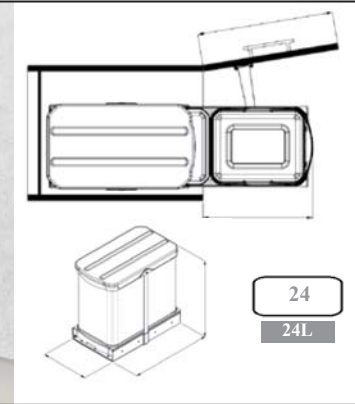
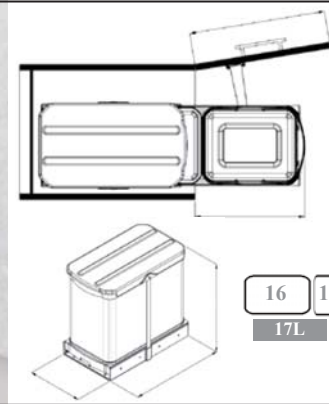
SPICE TRAY DRAWER INSERTS	
SPO15	15-1/4" X 19-1/2" X 1-3/32"
SPO24	23-1/2" X 19-1/2" X 1-3/32"

SOFT CLOSING



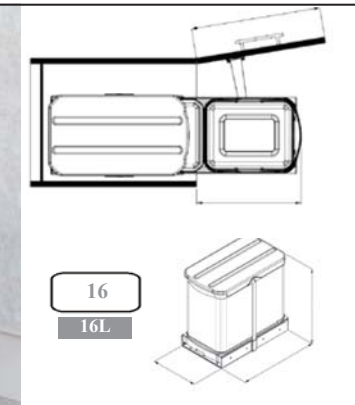
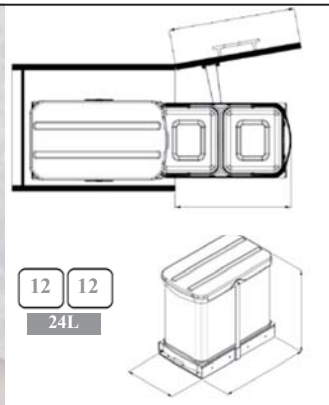
SINGLE PAIL WASTE BIN				
CODE	WIDTH	DEPTH	HEIGHT	CAPACITY
S-2575	250MM 9-13/16"	195MM 7-11/16"	180MM 7-1/16"	5L

SINGLE PAIL WASTE BIN					
CODE	WIDTH	DEPTH	HEIGHT	CABINET WIDTH	CAPACITY
S-2300	364MM 14-5/16"	470MM 18-1/2"	435MM 17-1/8"	40CM 15-3/4"	35L



SINGLE PAIL WASTE BIN WITH EXTRA COMPARTMENT					
CODE	WIDTH	DEPTH	HEIGHT	CABINET WIDTH	CAPACITY
S-2395	260MM 10-1/4"	440MM 17-5/16"	400MM 15-3/4"	40CM 15-3/4"	16L+1L

SINGLE PAIL WASTE BIN					
CODE	WIDTH	DEPTH	HEIGHT	CABINET WIDTH	CAPACITY
S-2572	260MM 10-1/4"	440MM 17-5/16"	400MM 15-3/4"	40CM 15-3/4"	24L

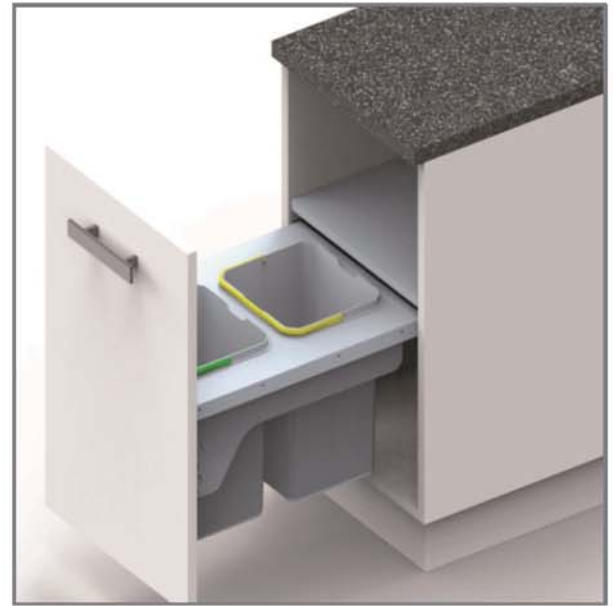
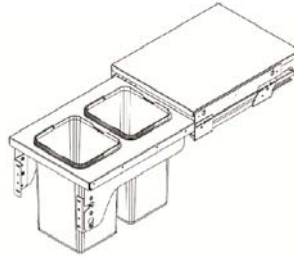
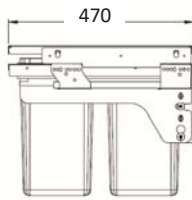
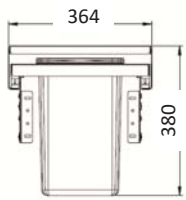


DOUBLE PAIL WASTE BIN					
CODE	WIDTH	DEPTH	HEIGHT	CABINET WIDTH	CAPACITY
S-2396	260MM 10-1/4"	440MM 17-5/16"	400MM 15-3/4"	40CM 15-3/4"	2 - 12L

SINGLE PAIL WASTE BIN					
CODE	WIDTH	DEPTH	HEIGHT	CABINET WIDTH	CAPACITY
S-2572	260MM 10-1/4"	440MM 17-5/16"	400MM 15-3/4"	40CM 15-3/4"	16L

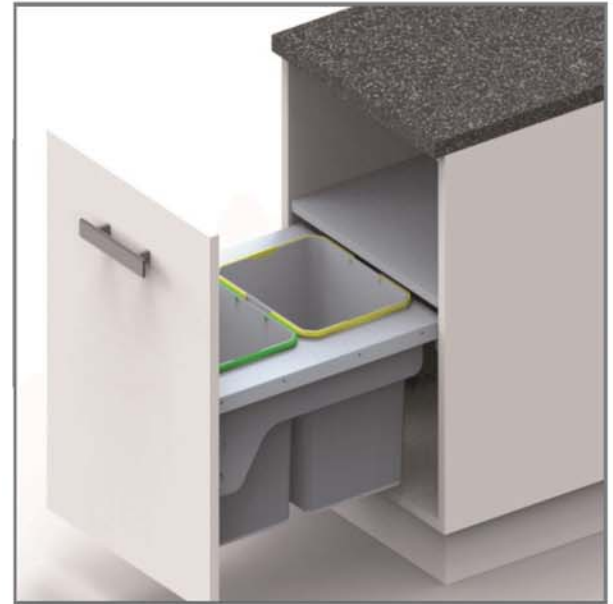
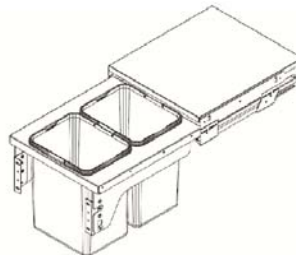
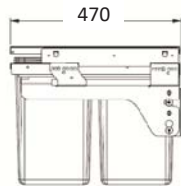
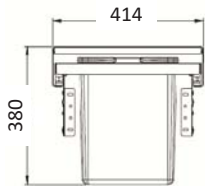
SOFTCLOSING

DOUBLE PAIL WASTE BIN					
CODE	WIDTH	DEPTH	HEIGHT	CABINET WIDTH	CAPACITY
S-2381	364MM 14-5/16"	470MM 18-1/2"	380MM 14-15/16"	40CM 15-3/4"	12L + 12L



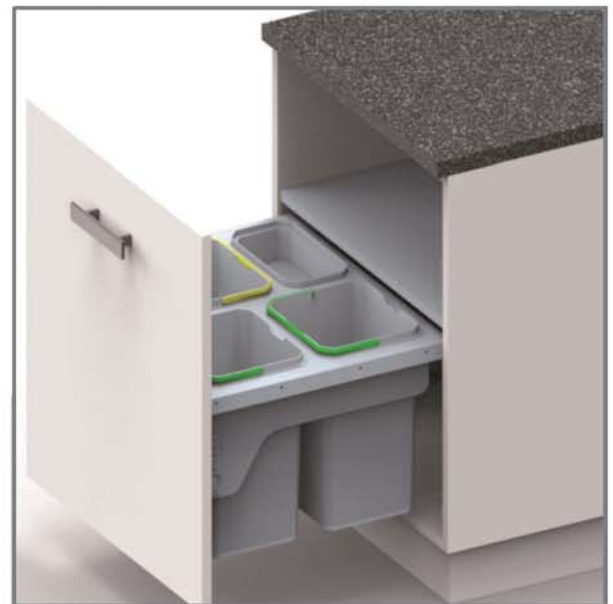
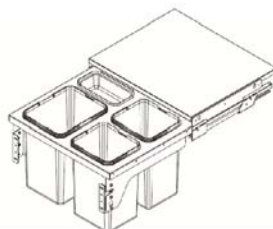
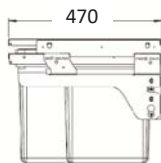
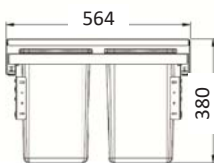
SOFTCLOSING

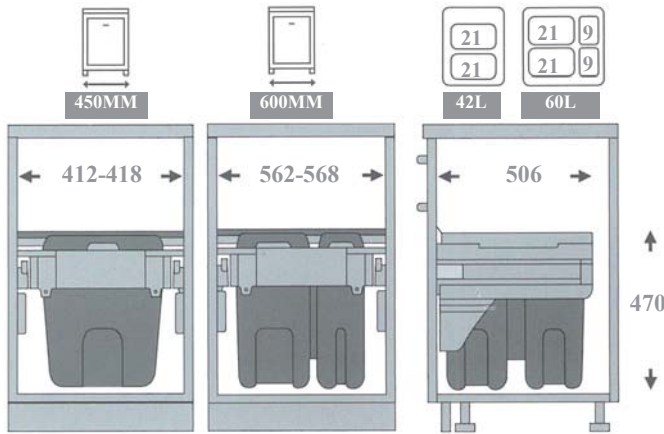
DOUBLE PAIL WASTE BIN					
CODE	WIDTH	DEPTH	HEIGHT	CABINET WIDTH	CAPACITY
S-2382	414MM 16-5/16"	470MM 18-1/2"	380MM 14-15/16"	45CM 17-11/16"	16L + 16L



SOFTCLOSING

FOUR PAIL WASTE BIN					
CODE	WIDTH	DEPTH	HEIGHT	CABINET WIDTH	CAPACITY
S-2385	564MM 22-3/16"	470MM 18-1/2"	380MM 14-15/16"	60CM 23-5/8"	16L + 12L + 12L + 1L





MULTI - PAIL WASTE BIN					
CODE	WIDTH	DEPTH	HEIGHT	CABINET WIDTH	CAPACITY
MB7753CM22A	412-418MM 16-1/4" - 16-1/2"	506MM 20"	470MM 18-1/2"	45CM 17-3/4"	2 - 21L
MB7753CM22D	562-568MM 22-1/8" - 22-3/8"	506MM 20"	470MM 18-1/2"	60CM 23-5/8"	2 - 21L 2 - 9L



STAINLESS STEEL TRASH CAN PULLOUT WITH BACK STORAGE 16 + 1 LITRE
 MB2130CM25B | 10-15/16"W x 17-17/32"D x 14-3/8"H



DOOR MOUNT TRASH CAN - 10LT WHITE
 MP3163DO34A | 12-1/2"W x 10-1/2"D x 12-1/2"H



DOOR MOUNT TRASH CAN - 13LT CHROME
 MB1120CM25B | 11-15/16"W x 11-9/16"D x 13-11/16"H



WOOD TOP MOUNT TRASH CAN PULLOUT - 35QT		
CAN-TM35	SINGLE 35QT	11"W x 21-5/8"D x 3-1/4"H
CAN-TM35SC	SINGLE 35QT, SOFT CLOSE	11"W x 21-5/8"D x 3-1/4"H
CAN-TMD35	DOUBLE 35QT	16-1/8"W x 21-5/8"D x 3-1/4"H
CAN-TMD35SC	DOUBLE 35QT, SOFT CLOSE	16-1/8"W x 21-5/8"D x 3-1/4"H
WOOD TOP MOUNT TRASH CAN PULLOUT - 50QT		
CAN-TM50	SINGLE 50QT	11-7/8"W x 21-5/8"D x 3-1/4"H
CAN-TM50SC	SINGLE 50QT, SOFT CLOSE	11-7/8"W x 21-5/8"D x 3-1/4"H
CAN-TMD50	DOUBLE 50QT	16-1/4"W x 21-5/8"D x 3-1/4"H
CAN-TMD50SC	DOUBLE 50QT, SOFT CLOSE	16-1/4"W x 21-5/8"D x 3-1/4"H



35QT SINGLE PLASTIC TRASH CAN	
CAN-35	BLACK PLASTIC TRASH CAN
CAN-35W	WHITE PLASTIC TRASH CAN



WIRE BOTTOM MOUNT TRASH CAN PULLOUT		
CAN-35-S	SINGLE 35QT OR 50QT BLACK	10-1/4"W x 22"D x 19-1/8"H
CAN-35-SW	SINGLE 35QT OR 50QT WHITE	10-1/4"W x 22"D x 19-1/8"H
CAN-35-D	DOUBLE 35QT ONLY BLACK	14-1/2"W x 22"D x 19-1/8"H
CAN-35-DW	DOUBLE 35QT ONLY WHITE	14-1/2"W x 22"D x 19-1/8"H
DOOR MOUNTING KIT		
CAN-DOORKIT	DOOR MOUNTING KIT - BLACK	2-1/2"W x 5-1/4"D x 6-5/8"H
CAN-DOORKITW	DOOR MOUNTING KIT - WHITE	2-1/2"W x 5-1/4"D x 6-5/8"H

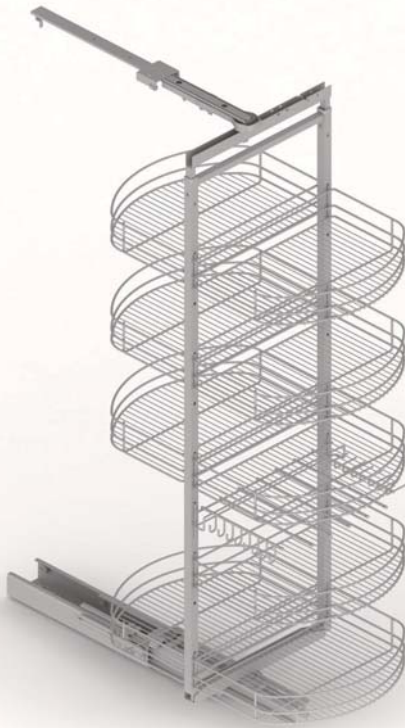
WOOD AND METAL BOTTOM MOUNT TRASH CAN PULLOUT - SINGLE		
CAN-MDBS	SINGLE 35QT - BLACK	12-1/2"W x 21-1/8"D x 19-1/2"H
CAN-MDBSW	SINGLE 35QT - WHITE	12-1/2"W x 21-1/8"D x 19-1/2"H
WOOD AND METAL BOTTOM MOUNT TRASH CAN PULLOUT - DOUBLE		
CAN-MDB	DOUBLE 35QT - BLACK	17"W x 21-1/8"D x 19-1/2"H
CAN-MDBW	DOUBLE 35QT - WHITE	17"W x 21-1/8"D x 19-1/2"H



WOOD BOTTOM MOUNT TRASH CAN PULLOUT - 35QT SINGLE		
CAN-WBMS35	SINGLE 35QT - BLACK	12-5/8"W x 21"D x 21"H
CAN-WBMS35W	SINGLE 35QT - WHITE	12-5/8"W x 21"D x 21"H
WOOD BOTTOM MOUNT TRASH CAN PULLOUT - 35QT DOUBLE		
CAN-WBM35	DOUBLE 35QT - BLACK	17-5/8"W x 21"D x 21"H
CAN-WBM35W	DOUBLE 35QT - WHITE	17-5/8"W x 21"D x 21"H
WOOD BOTTOM MOUNT TRASH CAN PULLOUT - 50QT SINGLE		
CAN-WBMS50	SINGLE 50QT - BLACK	12-5/8"W x 21"D x 25-1/4"H
CAN-WBMS50W	SINGLE 50QT - WHITE	12-5/8"W x 21"D x 25-1/4"H

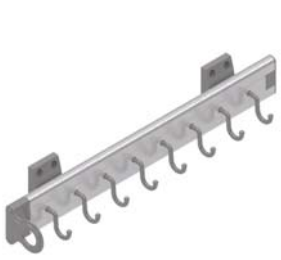


WOOD AND METAL BOTTOM MOUNT TRASH CAN PULLOUT - SINGLE	
14-13/16"W x 19-13/16"D x 22-7/16"H	
MPSC15KV25A	DBL. 35QT- GRAY



SOFTCLOSING	TURNING WARDROBE MECHANISM				
	C (MM)		W	D	H
	900	S-6621	780	500	2000-2150

TILT OUT HAMPER UNIT				
C (MM)		W	D	H
400	S-8113	330	290	500



ALUMINUM BELT RACK	
S-6541	85 x 460 x 90MM



TIE & BELT RACK	
S-6054	350 X 50 350MM



S-6018 (25MM)

TELESCOPIC WARDROBE LIFT				
	W	D	H	CAPACITY
S-6013	850-1150	140	900	10KGS



SHOE HOLDER	
S-6111	420-700 x 200 x 96MM
S-6112	820-1100 x 200 x 96MM



SHIRT & TOWEL BAR	
S-6071	50 X 300 X 60MM
S-6072	50 X 350 X 60MM
S-6073	50 X 400 X 60MM



SHELF GALLERY	
S-8601	300 X 15 X 65MM
S-8602	400 X 15 X 65MM
S-8603	500 X 15 X 65MM



HIDEAWAY IRONING BOARD			
	W	D	H
S-6611	150	340	1480



WIRE HANGING RAIL	
MM00HRCM17A	CHROME RAIL



VALET ROD (11")	
MM0140UL17C2	CHROME VALET ROD
MM0140UL95C2	NICKEL VALET ROD



TIE & BELT RACK (12")	
MM0140UL17D2	CHROME 14 RAILS
MM0140UL95D2	NICKEL 14 RAILS



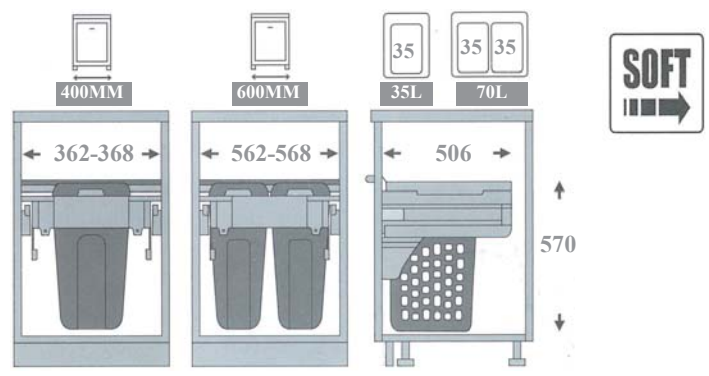
CASCADING TIE ORGANIZER 1-1/2" X 2-7/8" X 10-1/4"	
357T-DBAC	OIL RUB BRONZE
357T-PC	POLISHED CHROME
357T-SN	SATIN NICKEL

CLOSET RODS AND HOLDERS



CLOSET RODS & HOLDERS					
1	MM0880KV25A	8FT OVAL CLOSET ROD	6	MM0883KV25A	OVAL CLOSET ROD CENTER SUPPORT
2	MM0882KV25A	OVAL CLOSET ROD END CAPS WITH PINS	7	MM0884KV25A	OVAL CLOSET ROD END SUPPORT
3	MM0885KV25A	OVAL CLOSET ROD END CAPS W/OUT PINS	8	MM8793PR37A	8FT. GALVANIZED STEEL TRACK
4	MM7009CM17A	25MM DIA. ROUND CLOSET ROD ENDS	9	MP1981AR34A	8FT. PLASTIC WHITE COVER FOR GALV. STEEL TRACK
5	MM1783CM17A	10FT X 1" (25MM) ROUND CLOSET ROD	10	199044*/199043*	WHITE/BROWN CABINET HANGER AVAILABLE L & R

PULL OUT LAUNDRY HAMPERS



MULTI - PAIL WASTE BIN					
CODE	WIDTH	DEPTH	HEIGHT	CABINET	CAPACITY
MBLHB4CM34A	362-368MM 14-1/4" - 14-1/2"	506MM 20"	570MM 22-1/2"	40CM 15-3/4"	35L
MBLHB6CM34A	562-568MM 22-1/8" - 22-3/8"	506MM 20"	570MM 22-1/2"	60CM 23-5/8"	2 - 35L



CHROME BASKET



SATIN NICKEL BASKET



DARK BRONZE BASKET

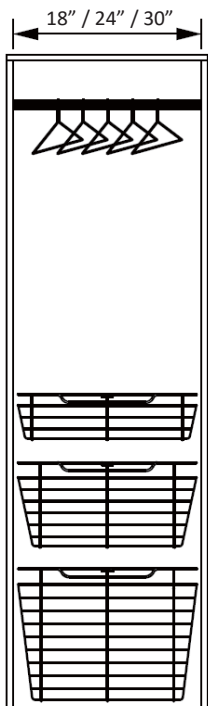


CANVAS LINER
THICK CANVAS MATERIAL WITH
VELCRO CLOSURES

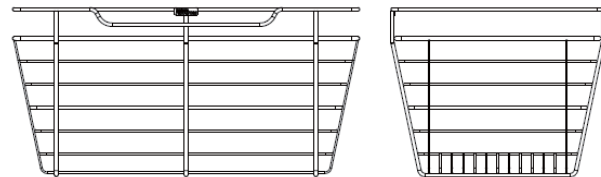


PLASTIC LINER
1MM THICK OPAQUE PLASTIC

100LBS FULL EXTENSION BALL BEARING SLIDES INCLUDED
HEAVY DUTY WIRE CONSTRUCTION
RUBBER COVERS ON SLIDE HOOKS KEEP BASKET SECURELY IN PLACE BUT ALLOW EASY REMOVAL OF BASKET
CLOSED CORNERS ALLOW SMALLER ITEMS TO BE STORED WITHOUT FALLING OUT
AVAILABLE FINISHES: CHROME, DARK BRONZE, SATIN NICKEL FOR 14" AND 16" DEEP CLOSETS



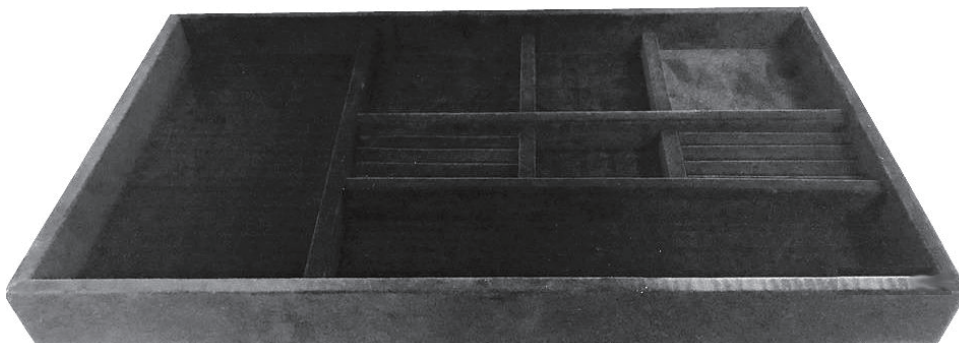
COLOR	CODE
CHROME BASKET	CH
DARK BRONZE BASKET	ORB
SATIN NICKEL BASKET	SN
CANVAS	TAN



PULLOUT BASKETS										
		18"			24"			30"		
DEPTH	TYPE	6"	11"	17"	6"	11"	17"	6"	11"	17"
14"	BASKET	POB1-14176	POB1-141711	POB1-141717	POB1-14236	POB1-142311	POB1-142317	POB1-14296	POB1-142911	POB1-142917
	CANVAS	BCL-14176	BCL-141711	BCL-141717	BCL-14236	BCL-142311	BCL-142317	BCL-14296	BCL-142911	BCL-142911
	PLASTIC	POB1PL-14176	POB1PL-1417611	POB1PL-141717	POB1PL-14236	POB1PL-142311	POB1PL-142317	POB1PL-14296	POB1PL-142911	POB1PL-142917
16"	BASKET	POB1-16176	POB1-161711	POB1-161717	POB1-16236	POB1-162311	POB1-162317	POB1-16296	POB1-162911	POB1-162917
	CANVAS	BCL-16176	BCL-161711	BCL-161717	BCL-16236	BCL-162311	BCL-162317	BCL-16296	BCL-162911	BCL-162911
	PLASTIC	POB1PL-16176	POB1PL-1617611	POB1PL-161717	POB1PL-16236	POB1PL-162311	POB1PL-162317	POB1PL-16296	POB1PL-162911	POB1PL-162917



COMPLETE JEWELRY TRY DRAWER SOLUTION		
	5 COMPARTMENT	10 COMPARTMENT
	23-7/8"W X 14"D X 4"H	23-7/8"W X 14"D X 2"H
BLACK	JD1-24-BL	JD1-24R-BL
GREY	JD1-24-GR	JD1-24R-GR



BLACK VELVET JEWELRY TRAYS DRAWER INSERT	
MBJTRACM02A	540 X 310 X 50MM
MBJTRACM02B	520 X 350 X 50MM
MBJTRACM02C	670 X 350 X 50MM
MBJTRACM02D	375 X 350 X 50MM



ELECTRIC MOTOR OPTIONAL

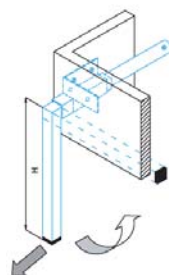
MURPHY BED	
MMSBLMCM02A	SPRING BALANCE LIFT MECHANISM
MMSBFS2CM02A	SINGLE BED FRAME WITH 13" LEGS
MMSBFD2CM02A	DOUBLE BED FRAME WITH 13" LEGS
MMSBFQ2CM02A	QUEEN BED FRAME WITH 13" LEGS

TURNING WALLBED



TURNING WALLBED	
MMFC01CM22A	QUEEN SIZE TURNING WALL BED

ECONOMIC MECHANISM



MECHANISM	
MM1081-34A	SINGLE BED WHITE MECHANISM
MM1082-34A	DOUBLE BED WHITE MECHANISM
MM1084-34A	QUEEN BED WHITE MECHANISM
STOW AWAY LEGS	
MM0400-17A	200MM (7-7/8") LEGS
MM0400-17B	250MM (9-27/32") LEGS
MM0400-17C	340MM (13-3/8") LEGS



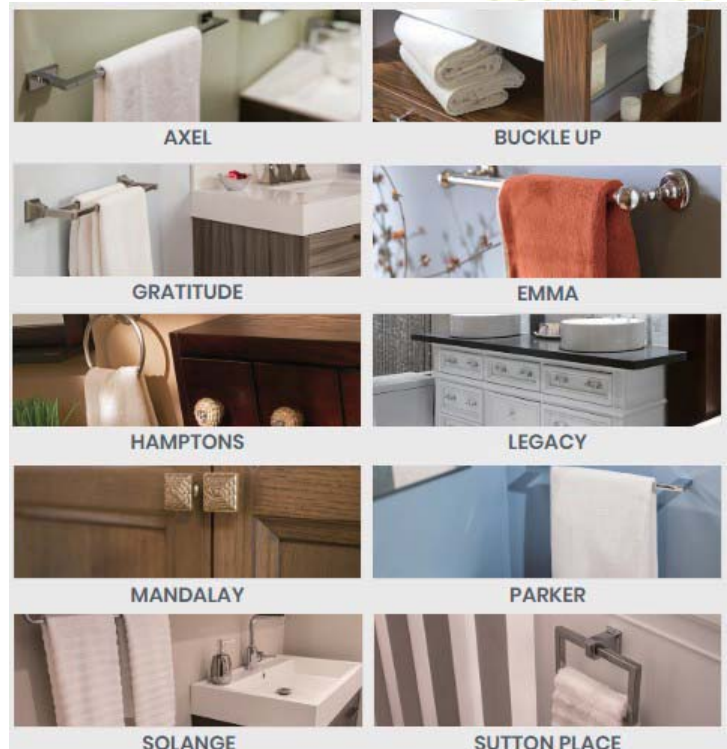
TELESCOPIC BASKETS					
C (MM)		W	D	H	CAPACITY
350	S-8411	250	300	560	10KG/SHELF



HARDWARE FOR REVOLVING PANEL	
S-8421	5 KGS CAPACITY



TELESCOPIC BASKETS					
C (MM)		W	D	H	CAPACITY
300	S-8411	250	300	560	3KG/SHELF

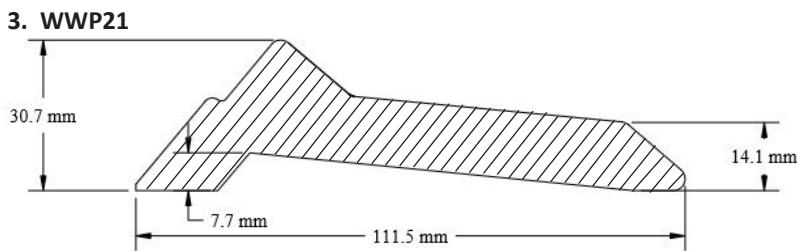
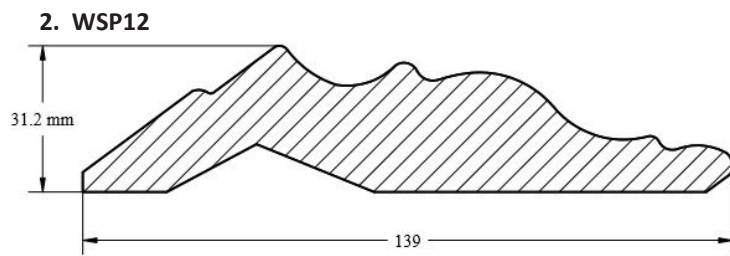
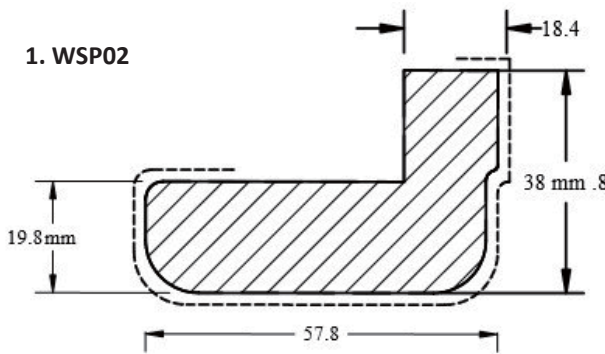




COMPLETE CUSTOMIZABLE PROGRAM ...



VENEER WRAPPED MOLDINGS



MOULDING 9FT LENGTH		
1	MWSP02PP24A	MAPLE
2	MWSP12PP24A	MAPLE
2	MWSP12PP26A	OAK
3	MWWP21PP24A	MAPLE



AVAILABLE SPECIES: ALDER, CHERRY, MAPLE, OAK, RUBBERWOOD & WHITE BIRCH
(some items are not available in all species)

ITEM	SIZE	ITEM	SIZE	ITEM	SIZE	ITEM	SIZE
1	BF90 4 1/4" x 4 1/4" x 4 1/4"	7	BF40 3 1/2" x 4 1/2"	13	WLF60 5" x 5" x 6"	19	WL80 4 1/2" x 4 1/2" x 8"
2	BF30 5" x 3"	8	BF14-3 4" x 4"	14	WLC50 3 1/2" x 3 1/2" x 5"	20	PFCS 6 3/4" x 6 3/4" x 4"
3	BF42 3 1/2" x 4"	9	BF45 4 1/2" x 4 1/2"	15	BF34 2 1/4" x 4"*	21	PFCS2 8 1/4" x 8 1/4" x 4 1/2"
4	BF32 3 1/2" x 4 1/2"	10	BF41 3 1/2" x 4 1/2"	16	PFCS-B 6 3/4" x 6 3/4" x 4 1/2"	22	BF15-2 3" x 3" x 8"
5	BF45 4 1/2" x 4 1/2"	11	FBF45 4 1/2" x 4 1/2"	17	WLC60 4 1/4" x 2 3/4" x 6"	23	PFC 6 3/4" x 6 3/4" x 4"
6	BF16-2 3 1/2" x 4 1/2"	12	BF33 3 1/2" x 4 1/2"	18	WL50 3 1/2" x 3 1/2" x 5"	24	BF35 3 1/2" x 4 1/2"

* OTHER SIZES AVAILABLE



ITEM	SIZE AND DESCRIPTION	ITEM	SIZE AND DESCRIPTION
1	ONL-01 20" x 3/4" x 4" * SHELL TRADITIONAL ONLAY	4	ONL-07 20" x 3/4" x 5 5/8" * GRAPE TRADITIONAL ONLAY
2	ONL-02 20" x 3/4" x 4 1/4" * ACANTHUS TRADITIONAL ONLAY	5	ONL-08 20" x 7/8" x 4 3/16" * FLEUR-DE-LIS TRADITIONAL ONLAY
3	ONL-04 20" x 3/4" x 5 3/4" * NOUVEAU TRADITIONAL ONLAY	6	ONL-09 20" x 3/4" x 3 5/8" * ACANTHUS TRADITIONAL ONLAY

* OTHER SIZES AVAILABLE

AVAILABLE SPECIES: ALDER, CHERRY, MAPLE, OAK, RUBBERWOOD & WHITE BIRCH
 (some items are not available in all species)



CORA			CORB			CORK			CORS			CORE		
W	D	H	W	D	H	W	D	H	W	D	H	W	D	H
4 1/2"	5"	10"	8 1/4"	6 1/4"	14"	2 3/4"	1 3/8"	6"	2 5/8"	9"	13 1/8"	3 3/8"	7 3/4"	13"
5"	7"	14"	9 1/2"	16"	24"	3 5/8"	1 1/2"	8"						
6 3/4"	7 5/8"	22"	3"	1 3/4"	4 1/4"	4 1/2"	1 7/8"	10"						
			2 1/2"	2 5/8"	7"	5 1/2"	3 1/2"	14"						
			4 1/2"	5"	10"	7"	3 3/4"	22"						
			4 7/8"	4 1/2"	12"	8 1/2"	4 3/4"	35"						
			5"	7"	14"	2 7/8"	1 1/2"	4 1/2"						
			6 3/4"	7 3/4"	22"	3 5/8"	1 1/2"	5 1/2"						
						4 1/2"	2"	7"						



CORT-F			CORT-P			CORT-S			COR5			COR6		
W	D	H	W	D	H	W	D	H	W	D	H	W	D	H
3 3/8"	8"	11 3/4"	3 3/8"	8"	11 3/4"	3 3/8"	8"	11 3/4"	2"	4 5/8"	6"	3"	6 3/8"	8"
									2"	6"	8"	3"	8"	10"
									2"	7 5/8"	10"	3"	11 5/16"	14"
									2"	10 11/16"	14"			
									2"	16 7/8"	22"			



CORZ			COR22			CORO			COR14			COR15		
W	D	H	W	D	H	W	D	H	W	D	H	W	D	H
3"	8"	9"	4"	5"	10"	3"	6"	14"	4"	5"	10"	5"	4"	10"
3"	10"	14"	5"	7"	14"	5"	6"	14"	5"	6"	14"	5"	6"	14"
3"	6"	18"	7"	12"	22"	6 3/4"	7 3/4"	22"	6 3/4"	7 3/4"	22"	6 3/4"	7 3/4"	22"



COR17			COR9			CORY			COR2			COR4		
W	D	H	W	D	H	W	D	H	W	D	H	W	D	H
4 1/2"	3"	10"	2 5/8"	8"	7"	3"	9"	14"	3"	6 5/8"	10"	3"	6 1/2"	10"
5 1/2"	5"	14"	3 3/8"	10"	9"				3"	9 3/8"	14"	3"	9"	14"
7"	7"	22"	4 5/8"	14"	12 1/2"									
			6"	18"	16"									

AVAILABLE SPECIES: ALDER, CHERRY, MAPLE, OAK, RUBBERWOOD & WHITE BIRCH
 (some items are not available in all species)



COR3			COR16			CORX			CORV			CORU		
W	D	H	W	D	H	W	D	H	W	D	H	W	D	H
3 3/4"	5"	7 1/4"	2"	6"	8"	4 3/8"	5"	10"	1 7/8"	7 1/2"	10 1/2"	4"	4"	10"
5 1/4"	7"	10"										5"	5"	14"
6 1/2"	11"	15 3/4"										7"	6"	22"



COR24			COR23			COR18			COR21			COR20		
W	D	H	W	D	H	W	D	H	W	D	H	W	D	H
4"	5"	10"	5"	3"	10"	4"	5"	10"	4"	4"	10"	5"	4"	10"
5"	7"	14"	6"	4"	14"	5"	6"	14"	5"	5"	14"	6"	5"	14"
7"	9"	21"	7"	7"	22"	6"	7"	22"	7"	6"	22"	7"	6"	22"



CORJ			CORG			CORM			COR8			COR19		
W	D	H	W	D	H	W	D	H	W	D	H	W	D	H
3"	6 1/2"	12"	3"	6 1/2"	12"	2"	7 1/2"	10 1/2"	2 1/2"	12"	12"	5"	4"	10"
			3"	8 1/2"	14"	3"	7 5/8"	10 1/2"				6"	5"	14"
												7"	6"	22"



CORC			CORN			CORQ			CORF			COR7		
W	D	H	W	D	H	W	D	H	W	D	H	W	D	H
2 5/8"	2 5/8"	7"	2 1/4"	1 1/2"	6"	4 1/2"	5 3/4"	9 3/4"	3 3/8"	7 3/4"	13"	2 1/2"	5 1/4"	8"
4 1/2"	5"	10"	3"	1 7/8"	8"	3 5/8"	2 1/2"	10"				2 1/2"	6 1/2"	10"
5"	6 3/4"	14"	3 3/4"	2 3/8"	10"	5"	6 3/4"	14"				2 1/2"	9"	14"
6 3/4"	7 5/8"	22"	5 1/2"	3 1/2"	14"	5"	3 5/16"	14"						
9 1/2"	16"	24"	8 1/2"	5 5/8"	22"	8 1/8"	6 1/4"	14"						
			7"	3 3/4"	22"	6 3/4"	7 5/8"	22"						
						8 1/4"	5 1/4"	22"						

AVAILABLE SPECIES: ALDER, CHERRY, MAPLE, OAK, RUBBERWOOD & WHITE BIRCH
(some items are not available in all species)



ITEM	SPECIES	SIZE AND DESCRIPTION
1 FCOR4	ALDER, CHERRY, MAPLE, RUBBERWOOD	7 1/2" x 8" x 36" ENGLISH ROMANESQUE WOOD FIREPLACE MANTEL WITH ROSETTE DETAIL
2 FCORB	ALDER, CHERRY, MAPLE, RUBBERWOOD	8" x 8" x 36" ACANTHUS WOOD FIREPLACE MANTEL
3 FCORE	ALDER, MAPLE, RUBBERWOOD	8" x 7" x 36" ACANTHUS FLUTED WOOD FIREPLACE MANTEL WITH SHELL DETAIL
4 FCORQ	ALDER, CHERRY, MAPLE, RUBBERWOOD	8" x 8" x 36" ROUNDED TRADITIONAL WOOD FIREPLACE MANTEL
5 FCOR5	ALDER, CHERRY, MAPLE, RUBBERWOOD	8" x 8" x 36" FLUTED WOOD FIREPLACE MANTEL
6 FCOR6	ALDER, CHERRY, MAPLE, RUBBERWOOD	8" x 7" x 36" BAROQUE WOOD FIREPLACE MANTEL WITH CARVED BASE
7 FCOR21	ALDER, CHERRY, MAPLE, RUBBERWOOD	8" x 6" x 36" SCANDINAVIAN ROMANESQUE WOOD FIREPLACE MANTEL



ITEM	SIZE	ITEM	SIZE	ITEM	SIZE	ITEM	SIZE
1 P36	5" x 5" x 35 1/2"	4 P62	3 1/2" x 3 1/2" x 35 1/2"*	7 P63	3 1/2" x 3 1/2" x 35 1/2"*	10 P68	3 1/2" x 3 1/2" x 35 1/2"*
2 P41	5" x 5" x 35 1/2"	5 P74	3 1/2" x 5" x 35 1/2"*	8 P75	3 1/2" x 3 1/2" x 35 1/2"*	11 P80	3 1/2" x 3 1/2" x 35 1/2"*
3 P60	3 1/2" x 3 1/2" x 35 1/2"*	6 P64	3 1/2" x 3 1/2" x 35 1/2"*	9 P67	3 1/2" x 3 1/2" x 35 1/2"*	12 P77	3 1/2" x 3 1/2" x 35 1/2"*

* OTHER SIZES AVAILABLE



ITEM	SIZE	ITEM	SIZE	ITEM	SIZE	ITEM	SIZE
1 P1	3" x 3" x 35 1/2"*	4 P4	3 3/4" x 3 3/4" x 35 1/2"	7 P9	3 3/4" x 3 3/4" x 35 1/2"	10 P19	4 1/2" x 4 1/2" x 35 1/2"
2 P2	3" x 3" x 42"*	5 P4-2	3 3/4" x 3 3/4" x 35 1/2"	8 P14	3 1/2" x 3 1/2" x 35 1/2"	11 P21	5" x 5" x 35 1/2"
3 P3	3" x 3" x 35 1/2"*	6 P6	3 3/4" x 3 3/4" x 35 1/2"	9 P15	4 1/2" x 4 1/2" x 35 1/2"	12 P23	4" x 4" x 35 1/2"

* OTHER SIZES AVAILABLE



ITEM	SIZE	ITEM	SIZE	ITEM	SIZE	ITEM	SIZE
1 P26	3" x 3" x 35 1/2"*	4 P70	3 1/2" x 3 1/2" x 35 1/2"*	7 P13	3 1/2" x 3 1/2" x 35 1/2"*	10 P29	3 1/2" x 3 1/2" x 35 1/2"*
2 P27	3 1/2" x 3 1/2" x 35 1/2"*	5 P78	3 1/2" x 3 1/2" x 35 1/2"*	8 P37	3 3/4" x 3 3/4" x 35 1/2"*	11 P34	3 3/4" x 3 3/4" x 35 1/2"*
3 P35	3 1/2" x 3 1/2" x 35 1/2"*	6 P81	3 1/2" x 3 1/2" x 35 1/2"*	9 P82	3 1/2" x 3 1/2" x 35 1/2"*	12 P39	3 3/4" x 3 3/4" x 35 1/2"*

* OTHER SIZES AVAILABLE



on trend
TM
cabinet doors



SLAB - PIANOVO
GLOSS 03 WHITE



SLAB - PIANOVO
GLOSS 15 RED



SLAB - PIANOVO
GLOSS 06 MYSTIC 1



SLAB - PIANOVO
GLOSS 12 CASTELLO



3 PIECE
PIANOVO MATT 02
MATT ALPINE WHITE



3 PIECE
FRATI 20
ROVERE ADAMELLO



3 PIECE
FRATI 21
ROVERE ADAMELLO



3 PIECE
FRATI 19
FRASSINO STEP

DOOR DESIGNS - AVAILABLE IN OVER 50 COLOURS AND WOODGRAINS



FRATI 02 - SLAB
ROVERE TASSO



FRATI 10 - SLAB
FRASSINO MOIRE



FRATI 03 - SLAB
ROVERE LOVE



FRATI 09 - SLAB
NOCE CARVAGGIO



FRATI 04 - SLAB
MOLVENO 7



FRATI 18 - SLAB
CARPINO



FRATI 17 - SLAB
OLMO AMBIENCE



FRATI 11 - SLAB
SQUARE 5



FRATI 06 - SLAB
ROVERE TASSO



FRATI 07 - SLAB
ROVERE TASSO



FRATI 04 - SLAB
ROVERE TASSO



FRATI 20 - SLAB
ROVERE TASSO



5 PIECE
FRATI 21
ROVERE ADAMELLO



5 PIECE
FRATI 20
ROVERE ADAMELLO



5 PIECE
FRATI 19
FRASSINO STEP



5 PIECE
RU 04
LARICE STONEY

82

CA

SS



85

CA

SS



AVAILABLE IN BLACK

87

CA

SS



VERRE OPAQUE SEULEMENT
OPAQUE GLASS ONLY

88

CA

SS



89

CA

SS



AVAILABLE IN BLACK

90

CA

SS

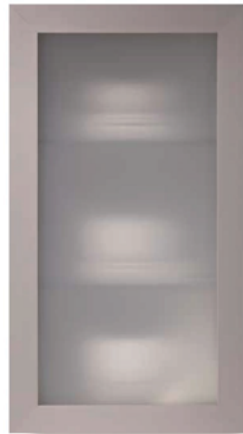


AVAILABLE IN BLACK

91

CA

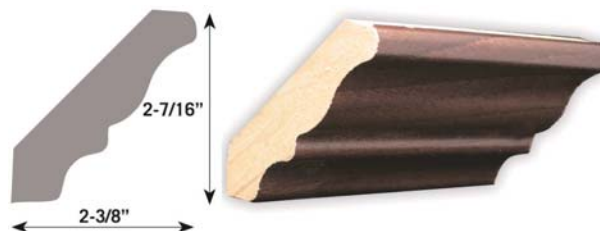
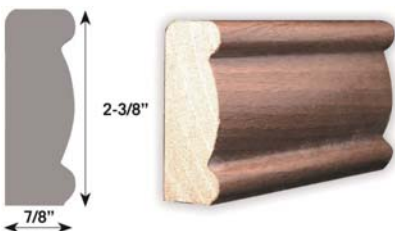
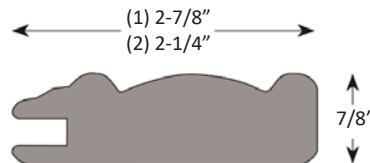
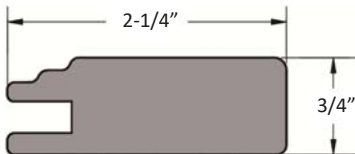
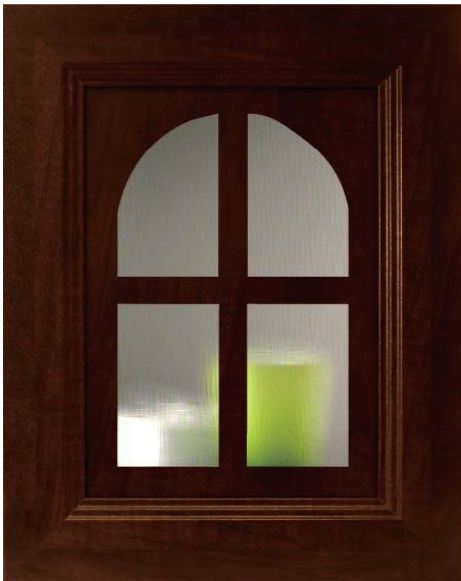
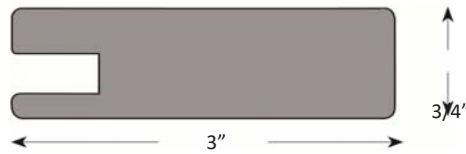
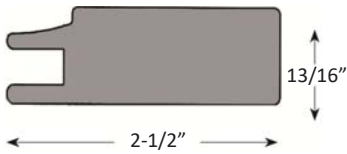
SS



98

CA





WF287/H699	
SF210/T604	
W100	
WF263/K644	
WF228(L444)	
WF294 (authentick)	
WF310 (authentick)	
WF368 (Médina)	
WF375 (Médina)	
WF202 (Médina)	
WF392 (authentick)	
WF393 (authentick)	
WF407 (Sawcut)	
WF408 (Sawcut)	
WF409 (Sawcut)	
WF242/D609	
WF116	



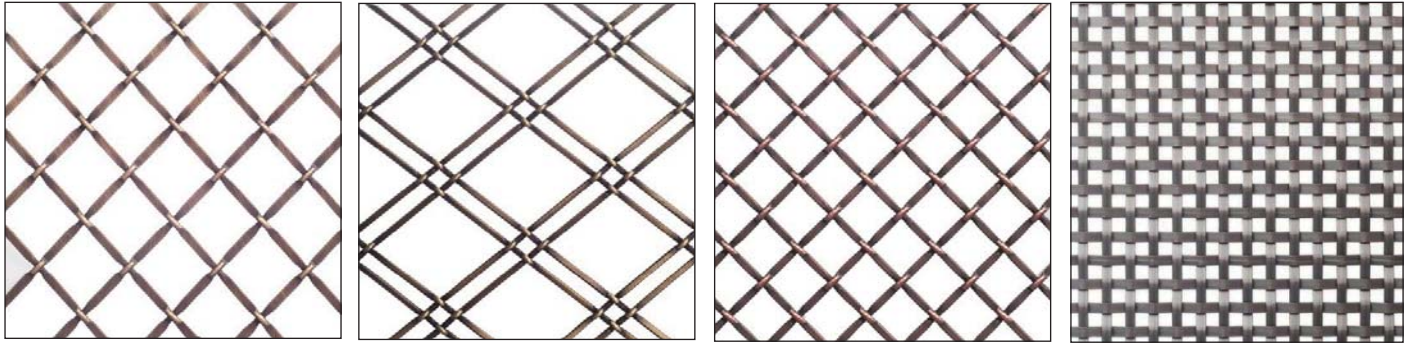
COMPLETELY CUSTOM SOLUTION

HOW IT WORKS:

- SELECT YOUR PROFILE, SPECIES AND FINISH.
- TELL US ALL THE SIZES
- SHOW US WHERE YOU WANT THE DRILLING TO BE
- CONFIRM THE ORDER

THAT'S IT... TALK TO A REPRESENTATIVE FOR MORE DETAILS





3/4" DIAMOND 36"x48"		DOUBLE DIAMOND 36"x48"		1/2" DIAMOND 36"x48"		BASKET WEAVE 36"x48"	
MM8122CM09A	ANTIQUÉ BRASS	MM8811CM09A	ANTIQUÉ BRASS	MM8812CM09A	ANTIQUÉ BRASS	MM7505CM95A	SATIN NICKEL
MM8122CM43A	ANTIQUÉ COOPER	MM8811CM43A	ANTIQUÉ COOPER	MM8812CM43A	ANTIQUÉ COOPER	5"X 5" SAMPLES BOXES ARE AVAILABLE FOR \$25/BOX	
MM8122CM95A	SATIN NICKEL	MM8811CM95A	SATIN NICKEL	MM8812CM95A	SATIN NICKEL		
MM8122CM98A	ANTIQUÉ IRON	MM8811CM98A	ANTIQUÉ IRON	MM8812CM98A	ANTIQUÉ IRON		

CUSTOM FINISHES AVAILABLE WITH 2 WEEKS LEAD TIME. PLEASE CALL FOR DETAILS

ALUMINUM DOOR GLASS OPTIONS



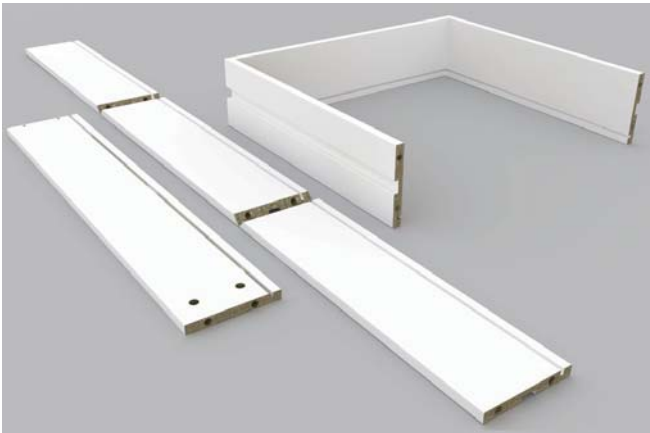
POLYESTER DOOR GLASS OPTIONS



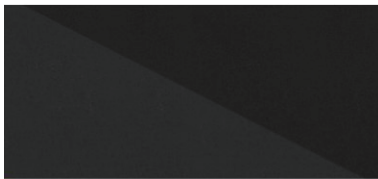
POSTFORM DOORS



DRAWERS PARTS



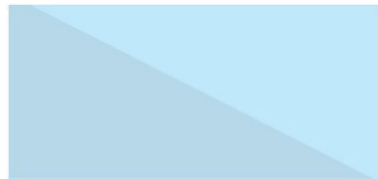
GLASS EFFECT PANELS



1947
Glass Antrasit Glass Anthracite



1948
Glass Beyaz Glass White



1949
Glass Buzul Glass Glacier



1944
Tema Glass Mocha



1950
Glass Mercan Glass Blueatoll



1946
Glass Safari Glass Safari



1945
Glass Titan Glass Titan

ACRYLIC PANELS

1643
Proje Beyaz Project White

1548
Mürdüm Damson

1334
Metalik Gri Metallic Grey

1712
HG Açık Gri HG Light Grey

1713
Mat Açık Gri Light Grey

1532
Krem Cream

1259
Kırmızı Red

1565
Antrasit Anthracite

1537
Kaşmir Cashmere

1531
Kapuçino Cappuccino

1256
HG Siyah HG Black

1549
Bordo Bordeaux

MATT PVC PANELS

105
Siyah Black

1169
Mat Açık Ahşap Mat Light Wood

1134
Lake Kırık Beyaz Lacqvered Cold White

82
Inoks Inox

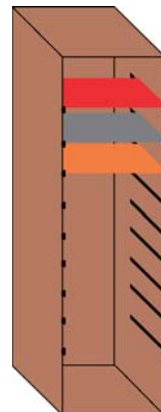
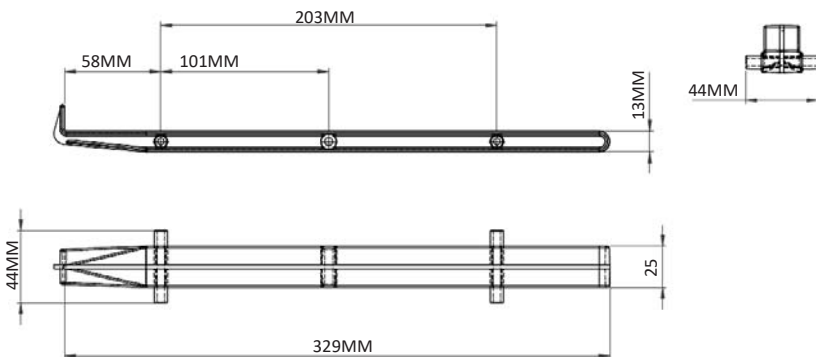
1734
Premium Krom Premium Chrome

1473
Lake Beyaz Lacover White

1444
Lacivert Dark Blue

88
Krem Cream

DOOR / PANEL DISPLAY RAIL



PVC STOCK COLORS

OTHER FINISHES AVAILABLE UPON REQUEST



CL1997	BRUSHED BRASS
--------	---------------



CL1999	DULL ALUMINUM
--------	---------------



CL1998	STAINLESS STEEL
--------	-----------------



CL908-P39	BLACK PVC
-----------	-----------



CL7246	CHOCOLATE PEAR PVC
--------	--------------------



CL199	ANTIQUE WHITE PVC
-------	-------------------



CL7042	HARDROCK MAPLE PVC
CL7010	HARDROCK MAPLE PVC



CL1008	HIGH GLOSS WHITE PVC
CL1003	WHITE PAINTABLE PVC
CL2901C	WHITE PVC



CL38H04	CHERRY PVC
CL7116	WILD CHERRY



CL1019	SUMMERFLAME PVC
--------	-----------------



CL7501	SHAKER CHERRY PVC
--------	-------------------



CL5037G01	NIGHTFALL PVC
-----------	---------------



CL61564	BALTIMORE OAK PVC
---------	-------------------



CL615R02	PALE OAK PVC
----------	--------------



CL7029	FUSION MAPLE PVC
--------	------------------



CL112F002	CANDLELIGHT PVC
-----------	-----------------



CL61563	SHADOW OAK PVC
---------	----------------



CL1045	PINK PVC
--------	----------

MELAMINE



PREGLUED MELAMINE		
EM4001PP34D	13/16 WHITE	OTHER FINISHES AVAILABLE ALSO IN POLYESTER
EM1751CM00D	13/16 SHADOW OAK	
EM1500CM00D	13/16 MAPLE	

VENEERS

VENEER EDGANDING			
PREGLUED	NON-PREGLUED	SPECIES	OTHER SPECIES AVAILABLE UPON REQUEST
EW0522CM26B	EW5115PP00G	7/8 RED OAK	
EW5091PP00G	EW5095PP00G	7/8 MAPLE	



CUSTOMIZATION



TOTALLY CUSTOMIZED

YOU CHOOSE SMOOTH, TEXTURED, HIGH GLOSS AND WOOD GRAIN COLORS.

YOU CAN ORDER IN THICKNESS BETWEEN 0.3MM AND 3MM.

THE WIDTH IS TOTALLY CUSTOMIZED; YOU CAN GET IT ANYWHERE FROM 13MM UP TO 610MM.

WHETHER YOU CHOOSE FROM OUR EXISTING PORTFOLIO OR ORDER A SPECIAL COLOR MATCH, WE ALWAYS TRY TO GIVE THE BEST POSSIBLE COLORMATCH ACCORDING TO THE BOARD.

	BEECH		PEAR		MAPLE		WENGE		MAHOGANY
CODE: PC2100		CODE: PC2155		CODE: PC2110		CODE: PC2180		CODE: PC2185	
	LIGHT CHERRY		CHERRY		OAK		NATURAL OAK		WHITE OAK
CODE: PC210045		CODE: PC2146		CODE: PC2120		CODE: PC2131		CODE: PC2125	
	BIRCH		NATURAL BIRCH		DARK WALNUT		NEW WALNUT		ITALIAN WALNUT
CODE: PC2135		CODE: PC2140		CODE: PC2170		CODE: PC2165		CODE: PC2160	
	TEAK		DARK PINE		OLIVE		ZEBIRANO		DARK ZEBIRANO
CODE: PC2195		CODE: PC2175		CODE: PC2200		CODE: PC2206		CODE: PC2205	
	BANU		WHITE MAPLE		BAMBOO		CHERRY BASE		PEAR BASE
CODE: PC2115		CODE: PC2210		CODE: PC2230		CODE: PC2515		CODE: PC2520	
	BEECH BASE		WHITE		WHITE LAKE		MILK WHITE		CREAM
CODE: PC2525		CODE: PC2500		CODE: PC2501		CODE: PC2502		CODE: PC2507	
	BEIGE		GREY		METALLIC GREY		YELLOW		GREEN
CODE: PC2505		CODE: PC2545		CODE: PC2540		CODE: PC2530		CODE: PC2555	
	LILAK		BLUE		ORANGE		RED		BLACK
CODE: PC2565		CODE: PC2560		CODE: PC2535		CODE: PC2570		CODE: PC2510	
	GLOSSY WHITE		GLOSSY CREAM		GLOSSY RED		GLOSSY BURGUNDY		GLOSSY BLACK
CODE: PC2305		CODE: PC2310		CODE: PC2315		CODE: PC2320		CODE: PC2325	
	GLOSSY EBONY		GLOSSY ELM		GLOSSY WENGE		GLOSSY OLIVE		GLOSSY WALNUT
CODE: PC2330		CODE: PC2335		CODE: PC2340		CODE: PC2345		CODE: PC2350	

	\varnothing 14 mm		50 PIECES / SHEET	50 SHEETS / PACK	40 PACKS / CARTON
--	---------------------	--	-------------------	------------------	-------------------

Peel & Stick Caps

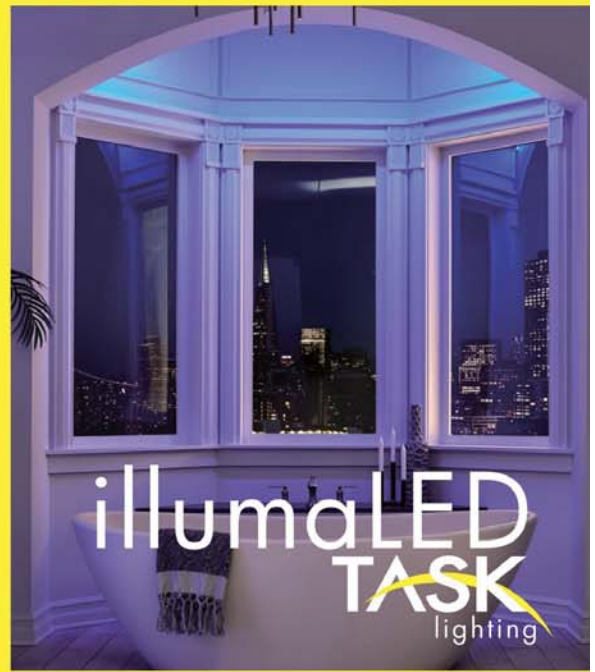


LAYTEX WOOD FILLER	
MS0049LP40A	WALNUT
MS0049LP39A	LIGHT OAK
MS0049LP27A	NATURAL
MS0049LP06A	MAHOGANY

CANFILL CRAYONS



OUR CANFILL CRAYONS MATCH SEVERAL BOARD MANUFACTURERS, INCLUDING BUT NOT LIMITED TO: ARAUCO, PANVAL, UNIBOARD AND MORE. IF YOU HAVE ANY QUESTION OR ARE NOT SURE OF A MATCH PLEASE CALL US AND WE CAN HELP.



POWER AND LIGHTING SOLUTIONS



ANGLE POWER STRIP
TR SERIES



ANGLE POWER STRIP
TR-USB SERIES



ANGLE POWER STRIP
APT SERIES



ANGLE POWER STRIP
SELECTION GUIDE



LIGHTED POWER STIP
DV SERIES
414 LUMENS PER FOOT



LIGHTED POWER STIP
RM SERIES
540 LUMENS PER FOOT



LIGHTED POWER STRIP
SELECTION GUIDE



TAPE LIGHT
VIVID SERIES
225 LUMENS PER FOOT



TAPE LIGHT
RADIANCE SERIES
120 LUMENS PER FOOT



TAPE LIGHT
DRIZZLE SERIES
49 LUMENS PER FOOT



TAPE LIGHT KITS
VIVID & RADIANCE SERIES



TAPE LIGHT
RAGE SERIES
466 LUMENS PER FOOT



TAPE LIGHT
SIDE VIEW SERIES
126 LUMENS PER FOOT



PUCK LIGHT
PEARL SERIES
205 LUMENS



PUCK LIGHT
VIVID ULTRA THIN SERIES
190 LUMENS



PUCK LIGHT
MINI ROUND SERIES
105 LUMENS



PUCK LIGHT
MINI SQUARE SERIES
105 LUMENS



RETRO FIT
CAN LIGHTS
900 LUMENS



ILLUMATED
ACCESSORIES



TASK LIGHTING
ACCESSORIES



TAPE LIGHT
RGB INFERNO SERIES
260 LUMENS PER FOOT



STRIP LIGHT FIXTURE
SG9 SERIES
540 LUMENS PER FOOT



MINI STRIP LIGHT FIXTURE
F SERIES
414 LUMENS PER FOOT



MINI ANGLED STRIP LIGHT
FIXTURE A SERIES
414 LUMENS PER FOOT



ANGLED STRIP LIGHT
FIXTURE S SERIES
540 LUMENS PER FOOT



RECESSED STRIP LIGHT
FIXTURE R SERIES
540 LUMENS PER FOOT



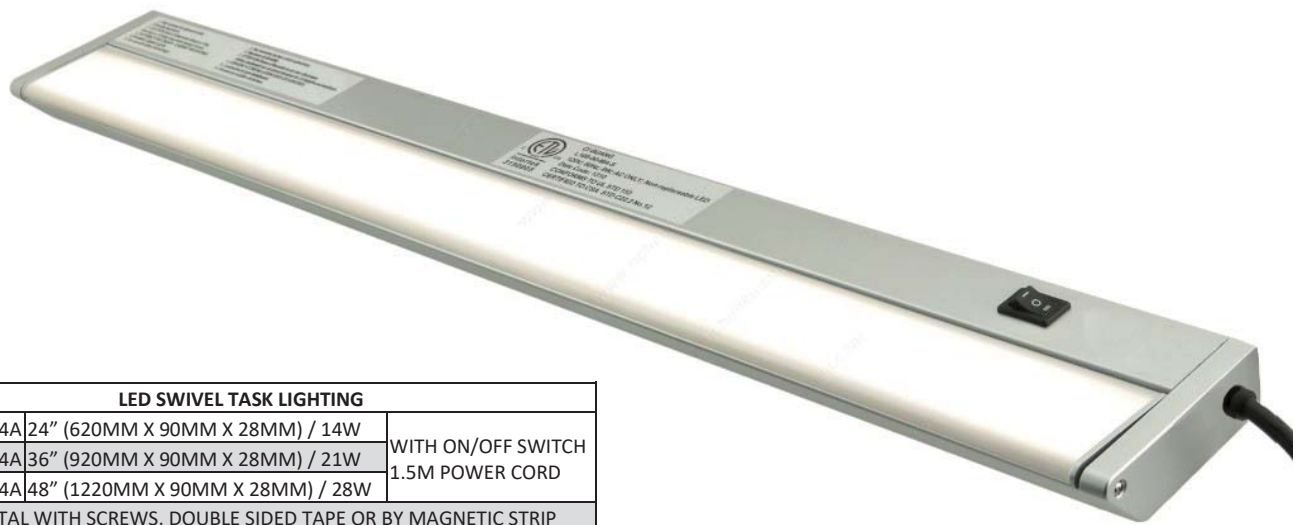
120V BAR LIGHT FIXTURE
432 LUMENS PER FOOT



LIGHTED CLOSET
ROD FIXTURE
414 LUMENS PER FOOT



SEMPRIALED
ACCESSORIES



LED SWIVEL TASK LIGHTING		
LMTL24CM34A	24" (620MM X 90MM X 28MM) / 14W	WITH ON/OFF SWITCH 1.5M POWER CORD
LMTL36CM34A	36" (920MM X 90MM X 28MM) / 21W	
LMTL48CM34A	48" (1220MM X 90MM X 28MM) / 28W	
CAN INSTAL WITH SCREWS, DOUBLE SIDED TAPE OR BY MAGNETIC STRIP		



LED STRIP LIGHTING	
LM12FLX	120° BEAM ANGLE COOL WHITE AND WARM WHITE DC12V

SATIN NICKEL 12 LED RECESSED LIGHTS			
WARM WHITE		COOL WHITE	
LM12LE-25W	SINGLE FIXTURE, NO TRANSFORMER	LM12LE-25C	SINGLE FIXTURE, NO TRANSFORMER
LM12LE-25W1	KIT WITH 1 FIXTURE, WITH TRANSFORMER	LM12LE-25C1	KIT WITH 1 FIXTURE, WITH TRANSFORMER
LM12LE-25W2	KIT WITH 2 FIXTURES, WITH TRANSFORMER	LM12LE-25C2	KIT WITH 2 FIXTURES, WITH TRANSFORMER
LM12LE-25W3	KIT WITH 3 FIXTURES, WITH TRANSFORMER	LM12LE-25C3	KIT WITH 3 FIXTURES, WITH TRANSFORMER
LM12LE-25W4	KIT WITH 4 FIXTURES, WITH TRANSFORMER	LM12LE-25C4	KIT WITH 4 FIXTURES, WITH TRANSFORMER
LM12LE-25W5	KIT WITH 5 FIXTURES, WITH TRANSFORMER	LM12LE-25C5	KIT WITH 5 FIXTURES, WITH TRANSFORMER

LED DOWN LIGHTS
LET US KNOW THE FINISH AND COMBINATION YOU ARE LOOKING FOR



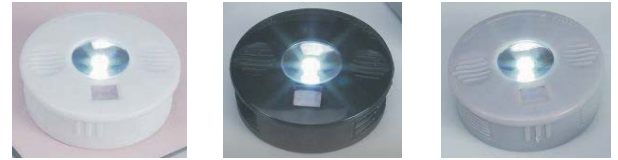
LMTDR	LMT1R	LMT1S	LMT1CR & LMT2CR
-------	-------	-------	-----------------



LMT07	LMTNLED25	LMLED9SQ	LMCC7 & LMCLED7
-------	-----------	----------	-----------------



RAIL LIGHT	
71-8508-708-I	LED WIRELESS WARDROBE RAIL 708MM LONG
71-8508-1008-I	LED WIRELESS WARDROBE RAIL 1008MM LONG



PUCK LIGHT	
LM8514CM34A	30MMD X 10MMH WITH 0.14W BULB (WHITE)
LM8524CM02A	30MMD X 10MMH WITH 0.14W BULB (BLACK)
LM8514CM17B	30MMD X 10MMH WITH 0.14W BULB (SILVER)



RAIL LIGHT	
71-8509-708-I	LED WIRELESS WARDROBE RAIL 708MM LONG
71-8509-1008-I	LED WIRELESS WARDROBE RAIL 1008MM LONG



71-8505-I-BK/CP	BLACK/DULL CHROME WITH SENSOR LED LIGHT
-----------------	---



71-8506A-I-CP	DULL CHROME WIRELESS DRAWER LED LIGHT
---------------	---------------------------------------



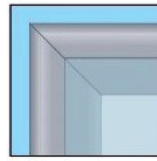
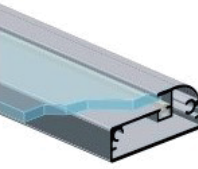
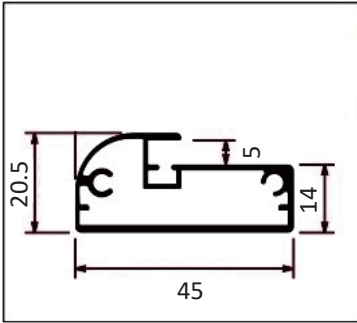
71-8504-I-CP	DULL CHROME WITH SOFT CLOSE FUNCTION LED LIGHT
--------------	--



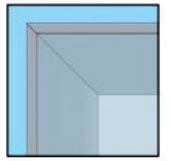
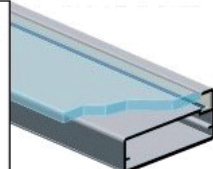
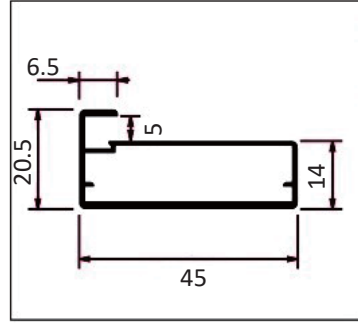
71-8501-I-B-SC	BLACK SATIN CHROME WITH 4 STAGE SWITCH LED LIGHT
----------------	--



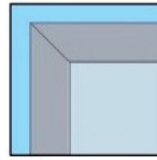
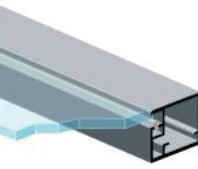
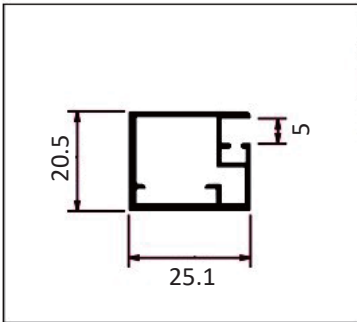
MM7400-02A	POWER BAR WITH 2 USB AND 2 PLUG POINTS (SIDE CORD)
------------	--



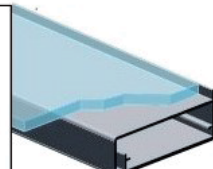
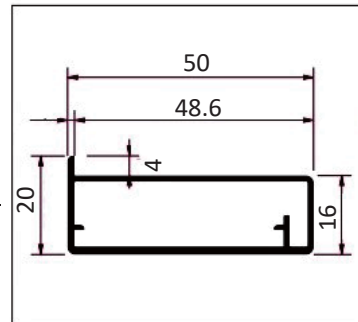
2359 SERIES - 3.9M			
CODE	COLOR	CORNER	SCREWS
2359-AL	ALUMINUM	200SQZ3	VAZB4X08TSP
2359-SS	STAINLESS		



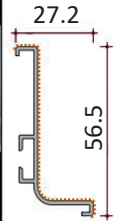
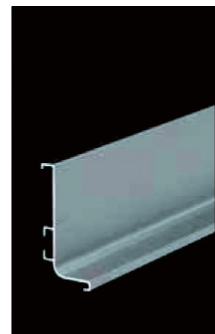
2364 SERIES - 3.9M			
CODE	COLOR	CORNER	SCREWS
2364-AL	ALUMINUM	200SQZ3	VAZB4X08TSP
2364-SS	STAINLESS		



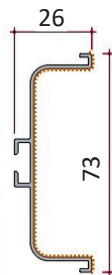
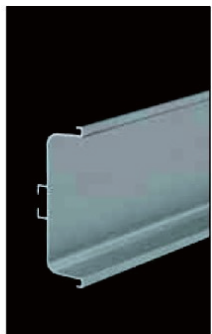
2360 SERIES - 4.1M			
CODE	COLOR	CORNER	SCREWS
2360-AL	ALUMINUM	2001SQZ	VAZB4X08TSP
2360-SS	STAINLESS		



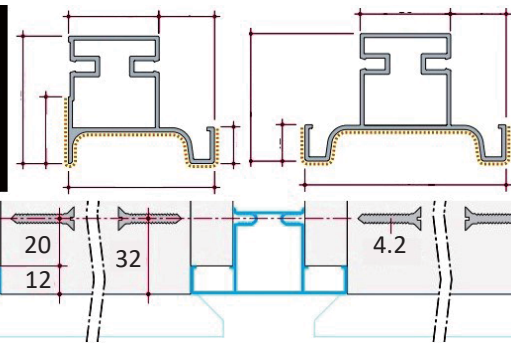
2346 SERIES - 3.9M			
CODE	COLOR	CORNER	SCREWS
2346-AL	ALUMINUM	200SQZ3	VAZB4X08TSP
2346-SS	STAINLESS		



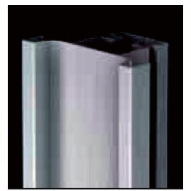
HORIZONTAL - 3.9M	
CODE	COLOR
8006-AL	ALUMINUM
8006-SS	STAINLESS



HORIZONTAL - 3.9M	
CODE	COLOR
8007-AL	ALUMINUM
8007-SS	STAINLESS

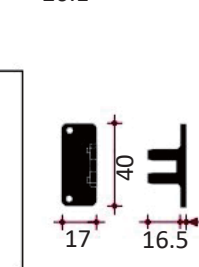
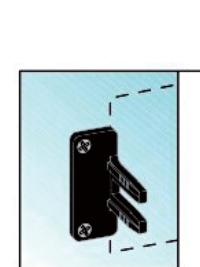
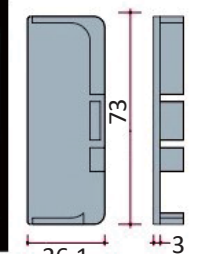
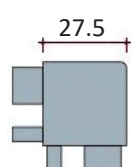
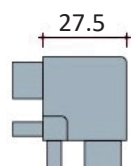
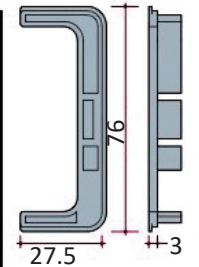
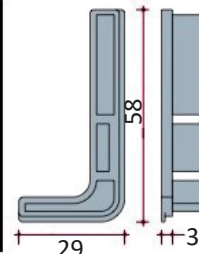
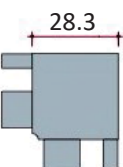
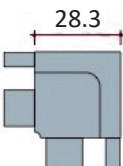


VERTICAL - 4.2M	
CODE	COLOR
8012-AL	ALUMINUM
8012-SS	STAINLESS



VERTICAL - 4.2M	
CODE	COLOR
8018-AL	ALUMINUM
8018-SS	STAINLESS

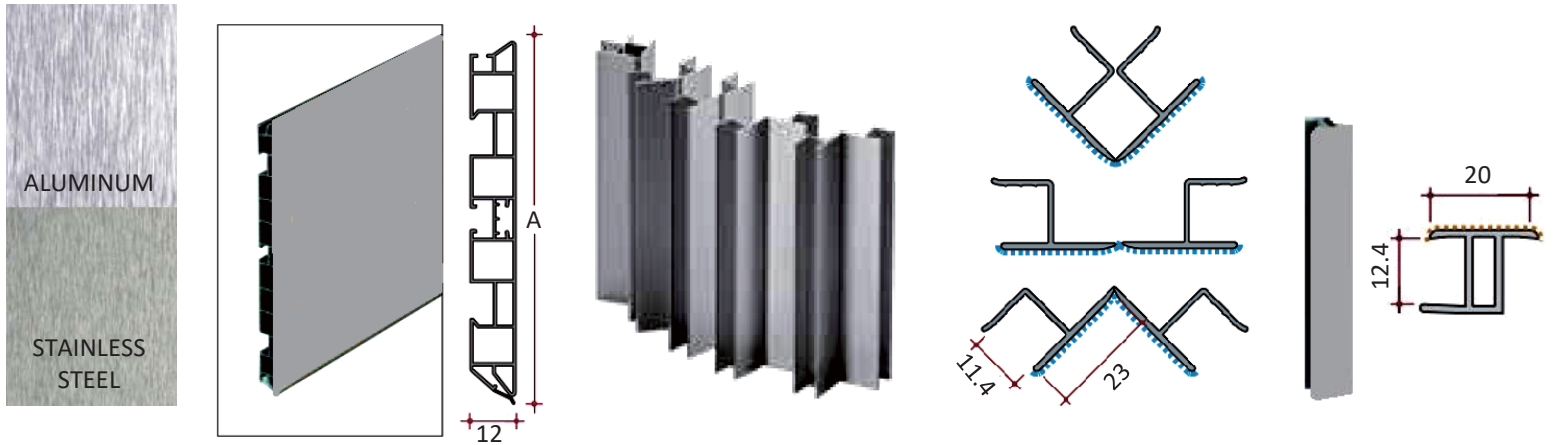
CODE	COLOR	CODE	COLOR	CODE	COLOR	CODE	COLOR	CODE	COLOR	CODE	COLOR	CODE	COLOR	CODE	COLOR
AG8006-AL	ALU.	AG8006-SS	S.S.	CF8006TP-AL	ALU.	CF8006TP-SS	S.S.	SG8006-AL	ALU.	SG8006-SS	S.S.	CF8006TPC-AL	ALU.	CF8006TPC-SS	S.S.



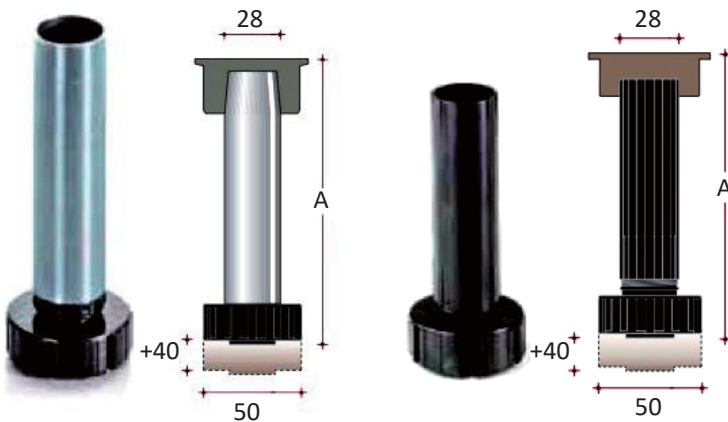
CODE	COLOR	CODE	COLOR	CODE	COLOR	CODE	COLOR	CODE	COLOR	CODE	COLOR	CODE	DESCRIPTION
AG8007-AL	ALU.	AG8007-SS	S.S.	CF8007TP-AL	ALU.	CF8007TP-SS	S.S.	SG8007-AL	ALU.	SG8007-SS	S.S.	SU106	CLIPS FOR 8006,8007,8012, AND 8018



VELA CURVED UPPER DOOR SYSTEM			
CURVED COMPONENT			
CODE RIGHT	CODE LEFT	COLOR	A
1634-AL-01	1634-AL-02	ALUMINUM	597MM (23")
1634-AL-03	1634-AL-04	ALUMINUM	717MM (28-1/4")
1634-AL-05	1634-AL-06	ALUMINUM	477MM (18-3/4")
1634-SS-01	1634-SS-02	STAINLESS	597MM (23")
1634-SS-03	1634-SS-04	STAINLESS	717MM (28-1/4")
1634-SS-05	1634-SS-06	STAINLESS	477MM (18-3/4")
CROSS BARS - 3.9M			
CODE	COLOR	CODE	COLOR
2359-AL	ALUMINUM	2359-AL	STAINLESS

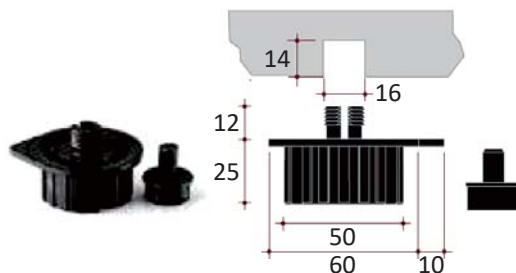


FOIL WRAPPED PVC TOE KICKS									
TOE KICK - 4M LONG			CORNER CONNECTOR			STRAIGHT CONNECTOR			
CODE	COLOR	A	CODE	COLOR	A	CODE	COLOR	A	
4600-100-AL	ALUMINUM	100	1356-100-AL	ALUMINUM	100	431-100-AL	ALUMINUM	100	
4600-100-SS	STAINLESS SEEL	100	1356-100-SS	STAINLESS SEEL	100	431-100-SS	STAINLESS SEEL	100	
4600-150-AL	ALUMINUM	150	1356-150-AL	ALUMINUM	150	431-150-AL	ALUMINUM	150	
4600-150-SS	STAINLESS SEEL	150	1356-150-SS	STAINLESS SEEL	150	431-150-SS	STAINLESS SEEL	150	

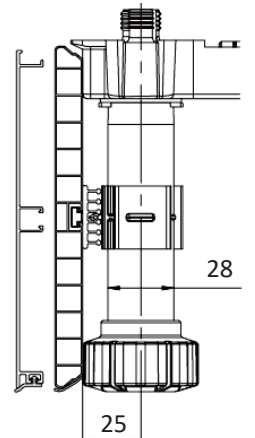


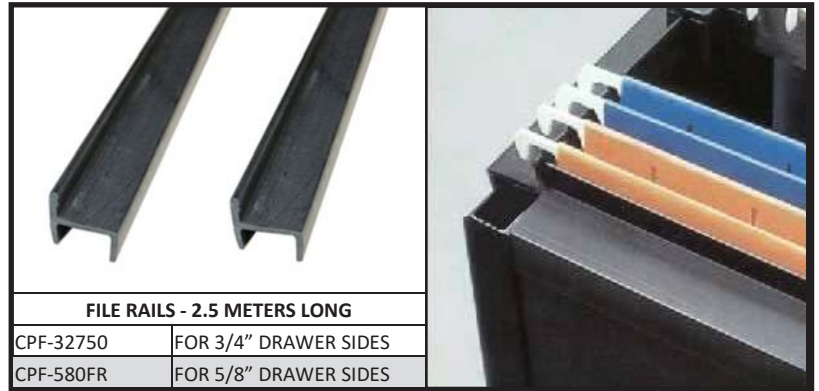
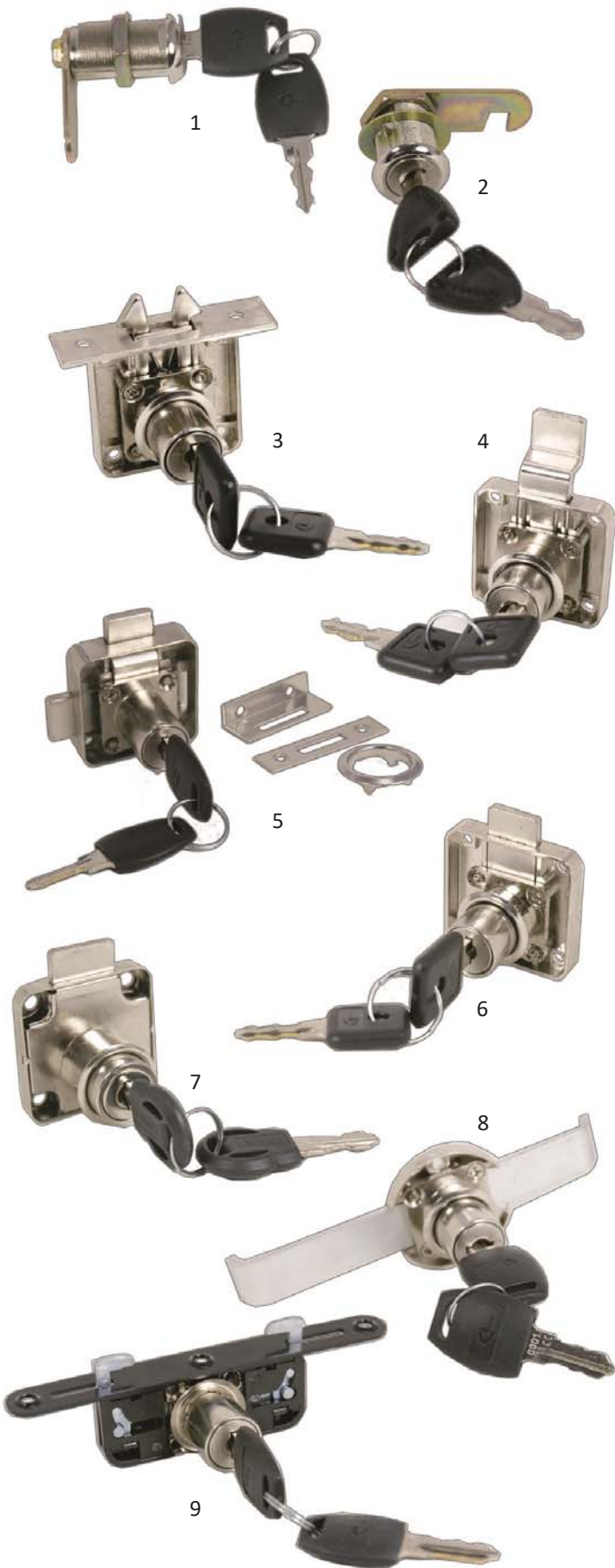
LEGS FOR TOE KICKS		
CODE	MATERIAL	A
162FR5010SF	STEEL	100
250FR5010SF	ABS	100
162FR5015SF	STEEL	150
250FR5015SF	ABS	150

LEGS TOP FOR TOE KICKS	
CODE	MATERIAL
RBA74S	ABS
MANY OTHER TOPS AVAILABLE	



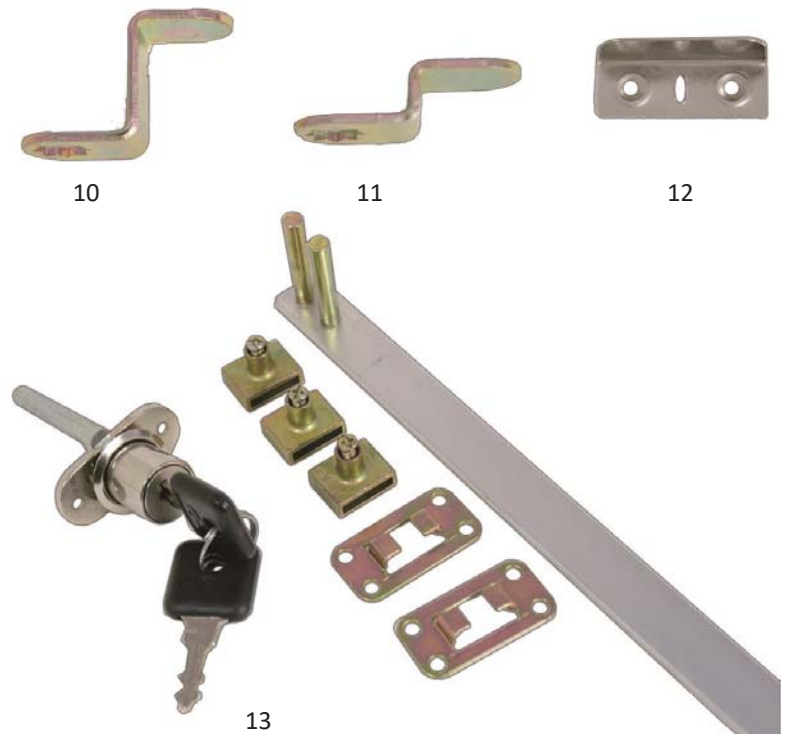
CLICK FOR TOE KICKS	
CODE	MATERIAL
GZR58-02	ABS

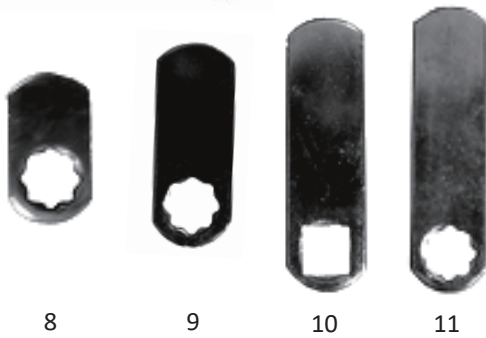
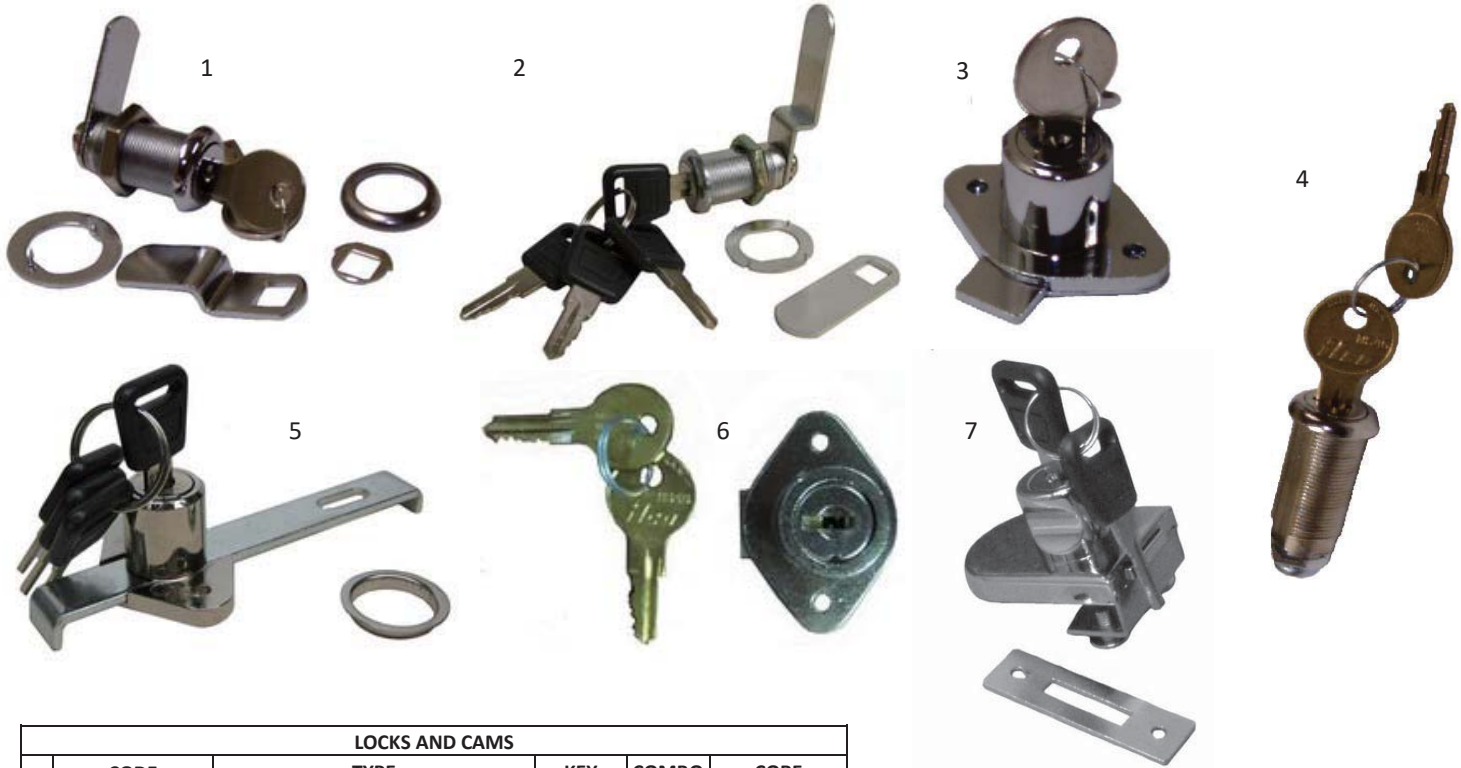




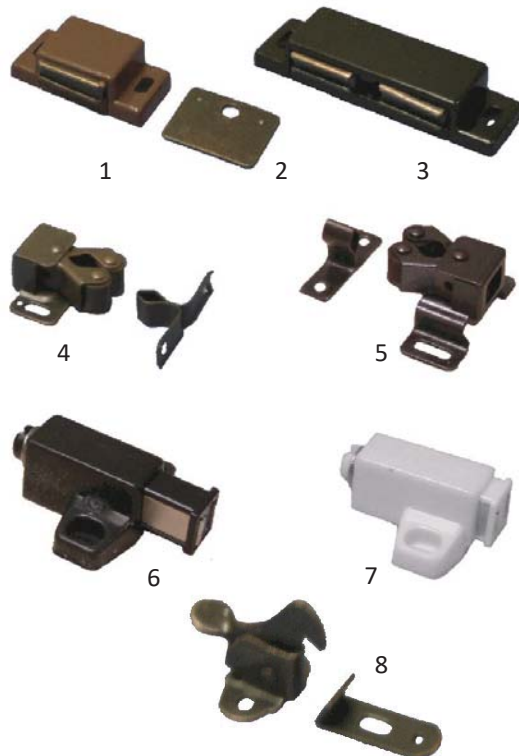
FILE RAILS - 2.5 METERS LONG	
CPF-32750	FOR 3/4" DRAWER SIDES
CPF-580FR	FOR 5/8" DRAWER SIDES

LOCKS AND CAMS						
	CODE	TYPE	DIAM.	KEY	COMBO	CORE
1	MM103CCM25A	1-1/8" CAM LOCK	30MM	DIFF.	1000	REMOVABLE
	MM103CCM25B			ALIKE		
2	MM0880CM25A	1-1/8" CAM LOCK	30MM	DIFF.	240	NOT REMOVABLE
	MM0880CM25B			ALIKE		
3	MM0605CM25A	MORTISE LOCK	18MM	DIFF.	1000	REMOVABLE
4	MM0128CM25A	DRAWER LOCK	22MM	DIFF.	1000	REMOVABLE
5	MM0628CM25A	DOUBLE DRAWER LOCK	18MM	DIFF.	1000	REMOVABLE
	MM0628CM25B			ALIKE		
6	MM0126CM25A	DRAWER LOCK	18MM	DIFF.	1000	REMOVABLE
	MM0126CM25B			ALIKE		
7	MM9001CM25B	DRAWER LOCK	18MM	ALIKE	240	NOT REM.
8	MM0127CM25A	DOUBLE DRAWER LOCK	18MM	DIFF.	1000	REMOVABLE
	MM0127CM25B			ALIKE		
9	MM0637CM25A	SLIDING DOOR LOCK	18MM	DIFF.	1000	REMOVABLE
	MM0637CM25B			ALIKE		
10	MM0C14CM25A	23MM CAM				
11	MM0C06CM25A	10MM CAM				
12	MM0041CM25A	L-BRACKET FOR LOCKS				
13	MM6036CM25A	3 DRAWER LOCK 600MM BAR	18MM	DIFF.	1000	REMOVABLE
	MM6036CM25B			ALIKE		





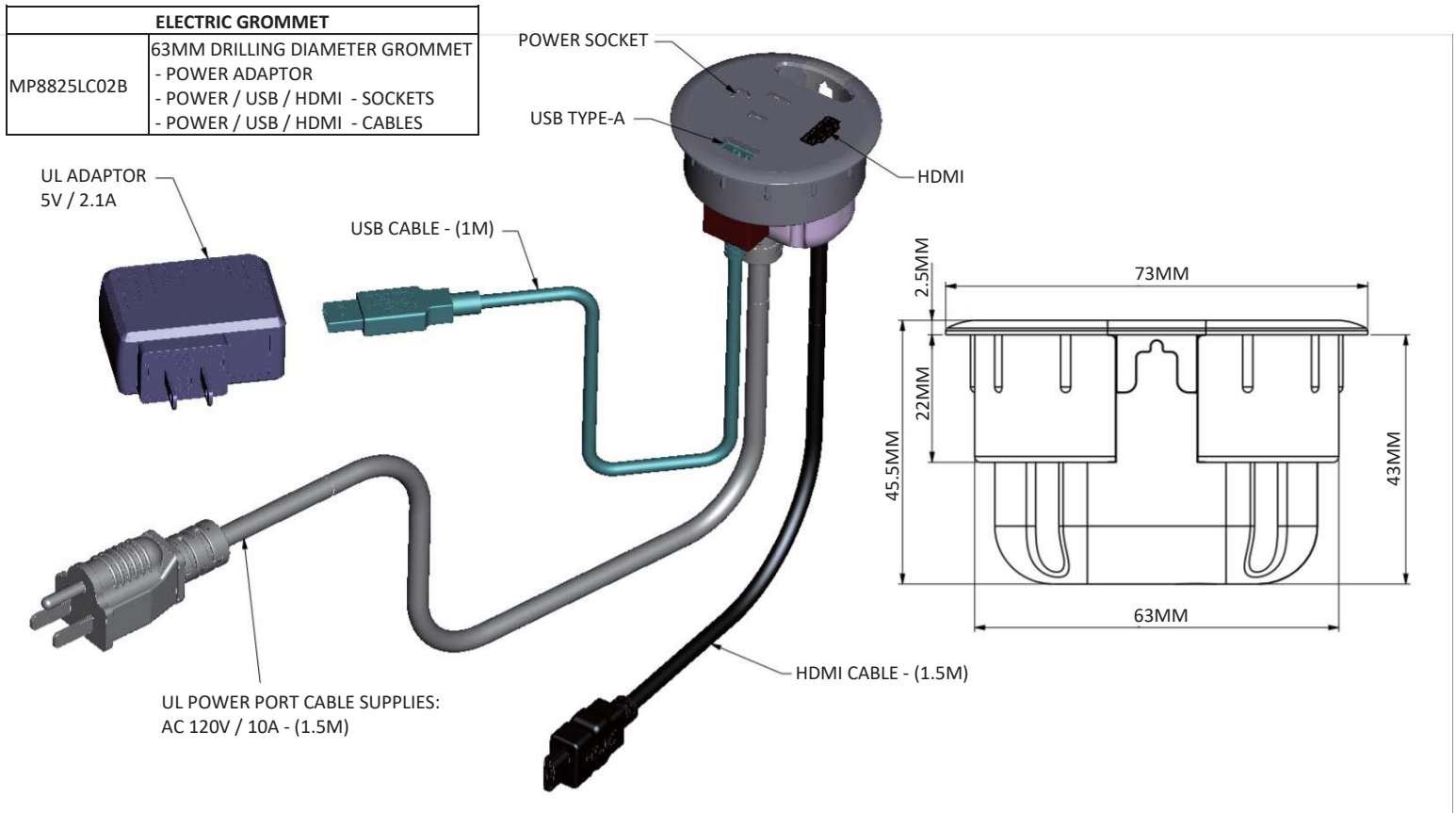
LOCKS AND CAMS					
	CODE	TYPE	KEY	COMBO	CORE
1	MM0701LC25A	1-1/8" CAM LOCK	ALIKE		NOT REM.
2	MM0701LC25D	1-1/8" CAM LOCK WITH 4 KEYS	DIFF.	240	NOT REM.
3	MM0702LC25A	DRAWER LOCK	ALIKE		NOT REM.
4	MM104CUN25A	1 3/8" NICKEL BARREL	ALIKE		NOT REM.
5	MM0823LC25A	22MM GANG LOCK WITH 4 KEYS	ALIKE		NOT REM.
6	MM0126UN25A	NICKEL PLATED DESK LOCK	ALIKE		NOT REM.
7	MM0723LC17A	GLASS DOOR LOCK	ALIKE		NOT REM.
8	MM00SNUN25A	3/4" STRAIGHT CAM			
9	MM00SJUN25A	1 1/4" STRAIGHT CAM			
10	MM00SFUN25A	1 3/4" STRAIGHT CAM			
11	MM00SDUN25A	2" STRAIGHT CAM			



DRAWER ANTI - TILTING LOCKING SYSTEM	
MMC102CM02A	2 DRAWER LOCKING SYSTEM
MMC103CM02A	3 DRAWER LOCKING SYSTEM
MMC104CM02A	4 DRAWER LOCKING SYSTEM
MMC106CM02A	2 DRAWER LOCKING SYSTEM

LOCKS AND CAMS		
1	MB0522SC03A	BROWN MAGNET CATCH
	MB0522SC34A	WHITE MAGNET CATCH
2	MM0008AC31	COPPER PLATE FOR CATCH
	MM0008AC37A	ZINC PLATE FOR CATCH
3	MB0523SC03A	BROWN DOUBLE MAGNETIC CATCH
	MB0523SC34A	WHITE DOUBLE MAGNETIC CATCH
4	MP0813SC34A	SINGLE WHITE MAGNETIC TOUCH LATCH
5	MM0075SC43A	BROWN ROLLER CATCH
6	MM0075SC43B	RAISED BROWN DOUBLE ROLLER CATCH
7	MP0813SC02A	SINGLE BLACK MAGNETIC TOUCH LATCH
8	MM0060SC40A	ANT. COPPER ELBOW CATCH

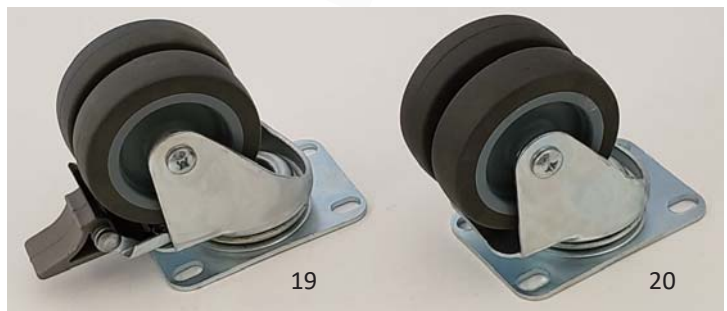




GROMMETS					
1	MP0193LC02A	BLACK PLASTIC RECTANGULAR GROMMET 49MM X 83MM	5	MP0186LC02A	BLACK PLASTIC GROMMET 38MM DIA.
2	MB16327WB02A (22A)	GROMMET SET UNASSEMBLED (ALSO IN SILVER PAINTED)	6	MP2000LC02A	BLACK PLASTIC GROMMET 40MM DIA.
3	MP3000LC02A	BLACK PLASTIC GROMMET 64MM DIA.	7	MPF924DV02A	BLACK PLATIC GROMMET WITH SPRING 60MM DIA.
4	MP0070NP02A	BLACK PLASTIC GROMMET 70MM DIA.	8	MP8865CA02A	BLACK PLASTIC STORAGE GROMMET 79MM DIA.



LEGS & CASTORS					
1	MM1457-02A	110MM DULL BLACK	11	MM9102-25B	102MM SATIN NICKEL
2	MM1457-09A	110MM ANT. BRASS	12	MM4545-17A	115 X 115 X 51MM P.CH
3	MM1457-25B	110MM DULL NICKEL	13	MM4545-25B	115 X 115 X 51MM S.N
4	MM0131-25B	110MM SATIN NICKEL	14	MB0B50-02A	50MM W. PLATE/BRAKE
5	MM1469-02B	120MM DULL BLACK	15	MB0050-02A	50MM W. PLATE
6	MM1462-25B	105MM DULL NICKEL	16	MB0B50-02B	50MM W. STEM/BRAKE
7	MM0137-25B	110MM SATIN NICKEL	17	MB0050-02B	50MM W. STEM
8	MM0301-76A	120-130MM ALUMINUM	18	MM2105-34A	25MM BOX CASTOR
9	MM2010-25T	110MM SATIN NICKEL	19	MB6325-22A	3" GREY WITH BRAKE
10	MM9210-25B	210-225MM S. NICKEL	20	MB6326-22A	3" GREY NO BRAKE





FOLDING TABLE LEGS	
MB01271F02B	CHROME, 60MM X 710MM, WITH 25MM ADJUSTMENT

FOLDING TABLE LEGS	
MB01271F02B	BLACK, 60MM X 710MM, WITH 25MM ADJ.
MB0028CM95A	STAINLESS STEEL ,60MM X 710MM, WITH 25MM ADJ.
MB0028CM25B	DULL NICKEL, 60MM X 845MM, WITH 25MM ADJ.
MB0028MA34B	WHITE, 60MM X 845MM, WITH 25MM ADJ.



CABINET LEGS AND CLIPS	
MP2210HS02A	BLACK ADJUSTABLE CABINET LEG 100MM TO 150MM EXTENSION
GZR58-03	QUICK CLIP FOR TOE KICK (SCREW ON)
MANY OTHER COMBINATION AND SIZES AVAILABLE	



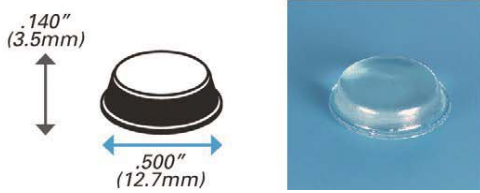
SHELF SUPPORTS AND BRACKETS



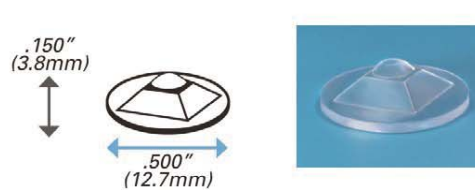
PARROT SHELF SUPPORT	
MM6853ES25A	ADJ. SUPPORT WITH 5MM PIN

OVAL HOLE AVAILABLE

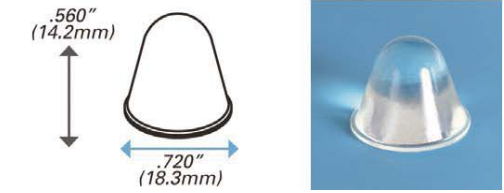
SHELF SUPPORT & BRACKETS					
1	MP607AAN15B	5/8" CLEAR SHELF SUPPORT WITH 5MMD PIN	14	MP1010LC02A	BLACK PLASTIC SHELF BRACKET WITH COVER
2	MP607AAN34B	5/8" WHITE SHELF SUPPORT WITH 5MMD PIN	15	MP1010LC03A	BROWN PLASTIC SHELF BRACKET WITH COVER
3	MB5648SC17A	5.2MM ZINC PLATED W/RUBBER SHELF SUPPORT	16	MP1010LC34A	WHITE PLASTIC SHELF BRACKET WITH COVER
4	MML514LC37D	5MMD ZINC PLATED SHELF SUPPORT	17	MM5004AC37A	1" X 1" X 1-3/4" 8 HOLE BRACKET
5	MML514LC02D	5MMD BLACK OXIDE SHELF SUPPORT	18	MM5002QU31R	5/8" X 5/8" X 1/2" ROUND HOLE BRACKET
6	MB5143LC37A	5MMD SHELF SUPP. WITH CLEAR PVC CUSHION	19	MM5006QU31A	3/4" X 3/4" X 3/4" METAL BRACKET
7	MM5144LC25A	5MMD NICKEL SHELF SUPPORT	20	MM2525AN37A	2 -1/2" X 2-1/2" X 1/2" ANGLE BRACKET
8	MB8001LC15A	5MMD CLEAR SHELF SUPPORT	21	MM9474CM31A	4" X 5/8" MENDING PLATE
9	MP8001SC34A	WHITE SHELF SUPPORT WITH 5MM STUD	22	MM5012LA31A	2" X 1/2" MENDING PLATE
10	MMSBLCH95A	SILVER GREY ZINC ALLOY BRACKET	23	MM0256KV37A	ZINC PLATED PILASTER CLIP
11	MB0452DO34A	5-1/2" X 9-1/4" WHITE COUNTER TOP SUPPORT	24	MM0255KV37B	8FT. ZINC PLATED PILASTER STRIP
12	MM5651CM17A	GLASS/WOOD SHELF SUPPORT 75MM, MAX 40MM ADJUSTABLE THICKNESS, CHROME			
13	MM5650SC25B	GLASS/WOOD SHELF SUPPORT 75MM, MAX 24MM ADJUSTABLE THICKNESS, BRUSHED NICKEL			



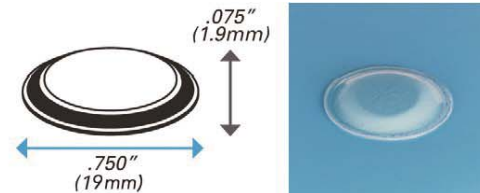
MR0005BS15A	CLEAR	200PCS / SHEET
MR0005BS34A	WHITE	5,000PCS / BOX



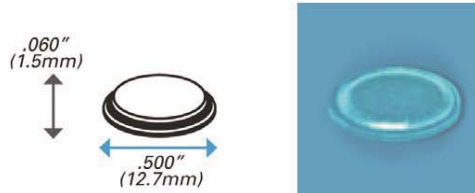
MPBS33BS15A	CLEAR	200PCS / SHEET
		5,000PCS / BOX



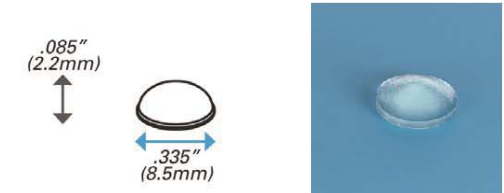
MR3700BS15A	CLEAR	1PC / SHEET
		1.500PCS / BOX



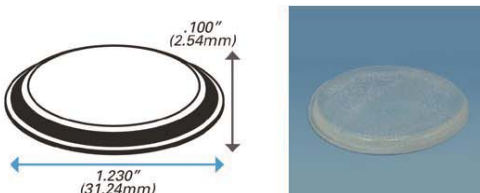
MR3900BS15A	CLEAR	84PCS / SHEET
		5,040PCS / BOX



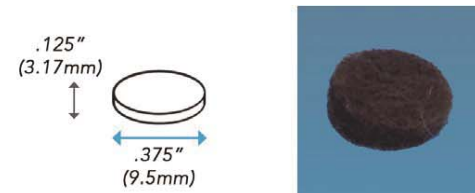
MR5000BS15A	CLEAR	200PCS / SHEET
		5,000PCS / BOX



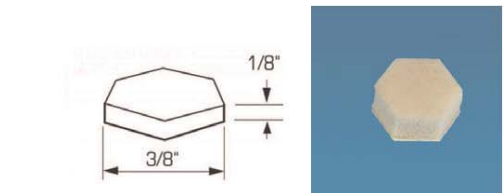
MR7000BS15A	CLEAR	450PCS / SHEET
		5,400PCS / BOX



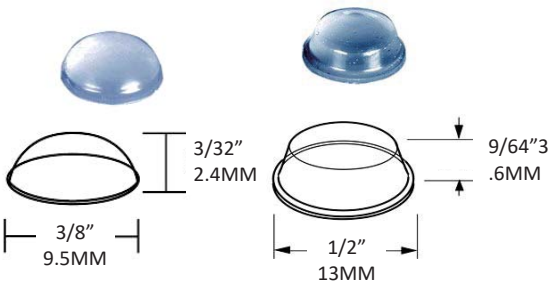
MRBS72BS15A	CLEAR	32PCS / SHEET
		2,400PCS / BOX



MF0001EF03A	BROWN	6,000PCS / ROLL
-------------	-------	-----------------



MZ0729CF34A	WHITE	203PCS / SHEET
-------------	-------	----------------



GLASS RETAINER	
MP1352YP05A	BROWN NOTCHED GLASS RETAINER
MP1352YP15A	CLEAR NOTCHED GLASS RETAINER
MP1352YP34A	WHITE NOTCHED GLASS RETAINER

LAMELLO BISCUITS	
MW0310ES24A	1" X 2 3/8" GR20

BUMPERS		
MR0005NP15B	CLEAR	288PCS / SHEET 7200PCS / BOX
MR0005EF15C	CLEAR	200PCS / SHEET 5000PCS / BOX



PLASTIC WEDGES AND GLIDES	
MP0048SC03A	BROWN STRIP GLIDE
MP0019AT03A	BROWN WEDGE

"T" AND INSERT NUTS FOR GLIDES	
1	MM6856AF31T "T" NUT, 5/16-18 THREAD, WITH PRONGS
2	MM0737LC37A INSERT NUT, 5/16-18 THREAD



WOODEN DOWELS	
MW5013SS57A	8X30
MW830GSB57A1	8X30 PREGLUED
MW5013SS57C	8X35
MW835GSB57A	8X35 PREGLUED
MW5013SS57C	8X40

OTHER SIZES AVAILABLE UPON REQUEST



GLIDES		
1	MP0049SC34B	WHITE NAIL GLIDE WITH 5/8 NAIL
2	MP0101LC34C	DIA. 15MM. WHITE SPIRAL NAIL GLIDE

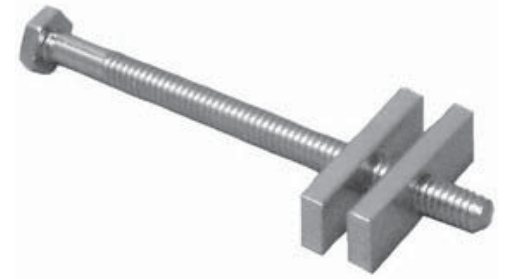
THREADED GLIDES	
1	MB2159LC34B M6, WHITE LEVELER, 19MM(D) X 3/4"
2	MB2159LC02B 1/4-20, BLACK LEVELER, 3/4"(D) X 3/4"
3	MB9250SC02A 5/16, BLACK LEVELER, 25MM(D) X 42MM
4	MMU038CM37A BRACKET FOR 3/8 LEVELER
5	MBG154LC02A 3/8, METAL LEVELER, 1-3/8"(D) X 2-1/2"
6	MB0153LC25B 5/16-18, METAL LEVELER, 28MM(D) X 1-1/2"
7	MB9242SC02A 1/4-20, BLACK LEVELER, 25MM(D) X 25MM



GLIDE AND NUT COMBO	
MB0400BA02A	5/16"-18 PROPEL NUT AND GLIDE



FURNITURE TIPPING RESTRAINT KIT	
MBATIPCM00A	CONTENT: <ul style="list-style-type: none"> • 1 ZIP TIE • 1 ANCHOR • 2 BRACKETS • 2 SCREWS <ul style="list-style-type: none"> • 1 FOR WALL ANCHOR • 1 FOR FURNITURE
	PACKAGING INCLUDES: <ul style="list-style-type: none"> • INSTRUCTIONS • WARNING DETAILS IN: <ul style="list-style-type: none"> • ENGLISH • FRENCH • SPANISH

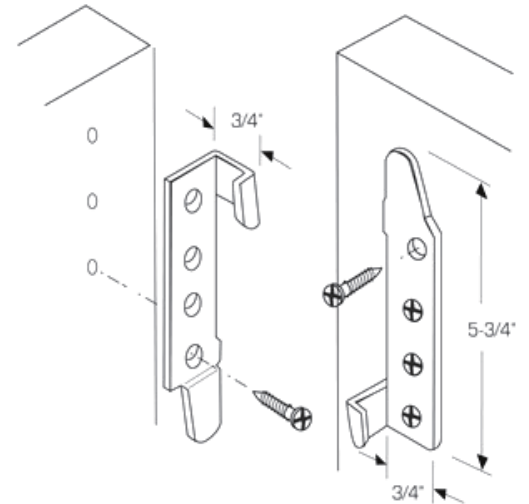


COUNTERTOP BOLT	
MM0003WT37A	3" COUNTERTOP BOLT
MM0003WT37B	3-1/2" COUNTERTOP BOLT



TABLE ACCESSORIES		
1	MP8007LC03A	PLASTIC TABLE-TOP LEVELLER
2	MM8463SC08A	BRASS PLATED SASH LOCK
3	MM6855LS37A	2-1/2" CORNER LEG BRACE

CAM AND DOWEL	
MM0201ES37A1	12MMH X 15MMD CAM
MM1802ES37A2	34MM DOWEL



BED ACCESSORY	
MM3750EL31B	5" NESTING BED BRACKET



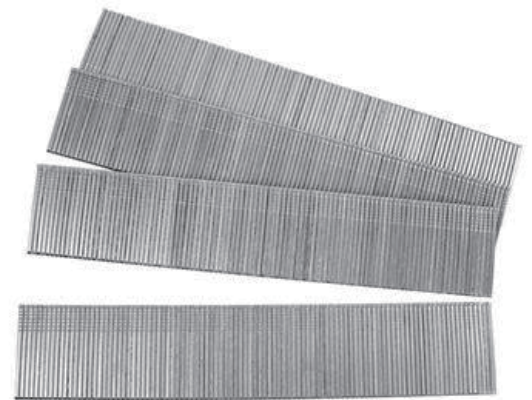
GALVANIZED LONG STAPLES	
9028	1 1/8" STAPLE 1/4" CR.
9032	18 GAUGE 1 1/4" CR.



YELLOW COATED STAPLES	
1002	16 GAUGE 7/16" CROWN X 2" LONG



SHORT STAPLES	
8-12	21 GAUGE 7/16" CROWN X 1/2" LONG
8-14	21 GAUGE 7/16" CROWN X 9/16" LONG
9012	18 GAUGE 1/4" CROWN X 1/2" LONG



BRAD NAILS	
181	18 GAUGE 1" BRAD NAIL
18112	18 GAUGE 1-1/2" BRAD NAIL
18114	18 GAUGE 1-1/4" BRAD NAIL

ROBERTSON - COLOR CODED BITS



ROBERTSON BITS							
CODE	SIZE	FINISH	CASE	CODE	SIZE	FINISH	CASE
MM5212RO14C	1 X 2"	GREEN	100	MM5223RO32C	2 X 3"	RED	50
MM5212MY31B	1 X 2"	PLAIN	100	MM5223MY31C	2 X 3"	PLAIN	50
MM5213RO14C	1 X 3"	GREEN	100	MM5224RO32B	2 X 4"	RED	50
MM5213MY31C	1 X 3"	PLAIN	100	MM5224MY31B	2 X 4"	PLAIN	50
MM5214MY31B	1 X 4"	PLAIN	100	MM5226RO32C	2 X 6"	RED	50
MM5222RO32C	2 X 2"	RED	100	MM5226MY31F	2 X 6"	PLAIN	50
MM5222MY31B	2 X 2"	PLAIN	100				



ROBERTSON 2 PIECE MAGNETIC BITS			
CODE	SIZE	FINISH	CASE
MM13MGRO31A	1 X 3"	ZINC	50
MM23MGRO31A	2 X 3"	ZINC	50

ROBERTSON IMPACT BITS			
CODE	SIZE	FINISH	CASE
MM12IMRO37A	1 X 2"	ZINC	100
MM14IMRO37A	1 X 4"	ZINC	100
MM22IMRO37A	2 X 2"	ZINC	100
MM24IMRO37A	2 X 4"	ZINC	100



FLAT HEAD (LUGS)



FLAT HEAD (NO LUGS)



FLAT RECEX



FLAT RECEX TYPE 17



PAN / TAPPING HEAD



ROUND WASHER



MACHINE SCREWS				
CODE	SIZE	DRIVE	FINISH	CASE
32BREAK	8:32 X 1-3/4"	#2 PHILLIPS SLOT COMBO	ZINC	4,000
NON BREAKABLE AVAILABLE IN SIZES FROM 1/2" TO 2" IN LENGTH				



EURO SCREWS				
CODE	SIZE	DRIVE	FINISH	CASE
MM1004RO37A	1/4 X 0.392	#1 RECEX	ZINC	12,000
MM1004FG37A	6.3 X 10MM	#2 POZI	ZINC	15,000
MM1004SC37B	6.3 X 13MM	#2 POZI	ZINC	15,000



FLAT TOP PAN RECEX, FRAMELOK, PILOT SCREW				
CODE	SIZE	DRIVE	FINISH	CASE
MM51P7RO31I	7 X 1-1/4"	#2 SQUARE	BARE	7,500
MM51P7RO31K	7 X 1-1/2"	#2 SQUARE	BARE	6,000



MODIFIED TRUSS RECEX, EXTRA LARGE WASHER, TYPE 17, LO-ROOT				
CODE	SIZE	DRIVE	FINISH	CASE
MM8118RO37A1	8-10 X 1-1/8"	#2 RECEX	ZINC	10,000



TAPPING SCREWS				
CODE	SIZE	DRIVE	FINISH	CASE
TAPS06000308B	6 X 3/8"	#1 SQUARE	BARE	20,000
TAPS06000716	6 X 7/16"	#1 SQUARE	ZINC	20,000
TAPS06000508	6 X 5/8"	#1 SQUARE	ZINC	15,000
TAPS08000916	8 X 9/16"	#2 SQUARE	ZINC	12,000
TAPS08000508	8 X 5/8"	#2 RECEX	ZINC	12,000
TAPS08000304	8 X 3/4"	#2 SQUARE	ZINCE	10,000
TAPS08010000	8 X 1"	#2 SQUARE	ZINCE	8,000
TAPS08010102	8 X 1-1/2"	#2 SQUARE	ZINCE	5,000
TAPS08010304	8 X 1-3/4"	#2 SQUARE	ZINCE	4,500
TAPS08030000	8 X 3"	#2 SQUARE	ZINCE	1,500



ROUND WASHER, LO-ROOT				
CODE	SIZE	DRIVE	FINISH	CASE
PBRWS08000508	8 X 5/8" TYPE 17	#2 SQUARE	ZINC	12,000
MMW817RO37G	8 X 1" TYPE 17	#2 SQUARE	ZINC	8,000
MMW817RO37G1	8 X 1"	#2 SQUARE	ZINC	8,000
PBRWS06010108	6 X 1-1/8"	#1 SQUARE	ZINC	
PBRWS08010108	8 X 1-1/8" TYPE 17	#2 SQUARE	ZINC	6,000
PBRWS08010104	8 X 1-1/4" TYPE 17	#2 SQUARE	ZINC	6,000
PBRWQ08010104	8 X 1-1/4" TYPE 17	#2 RECEX	ZINC	6,000
PBRWS08010102	8 X 1-1/2" TYPE 17	#2 SQUARE	ZINC	5,000
MM51W8RO37M	8 X 1-3/4"	#2 SQUARE	ZINC	4,000
MM51W8RO37N	8 X 2"	#2 SQUARE	ZINC	3,000
PBRWS08020102	8 X 2-1/2" TYPE 17	#2 SQUARE	ZINC	2,500
PBRWQ08030000	8 X 3" TYPE 17	#2 SQUARE	ZINC	1,500

#6 FLAT HEAD WITH #2 SQUARE SOCKET, LO-ROOT, TYPE 17 WITH NIBS				
CODE	SIZE	DRIVE	FINISH	CASE
MM51F6RO37I2	6 X 1-1/4"	#2 SQUARE	ZINC	8,000
MM51F6RO37K2	6 X 1-1/2"	#2 SQUARE	ZINC	7,000
MM51F6RO37M2	6 X 1-3/4"	#2 SQUARE	ZINC	5,000
MM51F6RO37N2	6 X 2"	#2 SQUARE	ZINC	4,000



FLAT RECEX, LO-ROOT, TYPE 17 MAXX SCREW				
CODE	SIZE	DRIVE	FINISH	CASE
MM8100RO31B	8 X 1"	RECEX	BARE	10,000
MM8100RO37B	8 X 1"	RECEX	ZINC	10,000
MM8114RO31B	8 X 1-1/4"	RECEX	BARE	7,500
MM8114RO37B	8 X 1-1/4"	RECEX	ZINC	7,500
MM8112RO31A	8 X 1-1/2"	RECEX	BARE	5,000
MM51FHRO37K	8 X 1-1/2"	RECEX	ZINC	5,000
MM8134RO31A	8 X 1-3/4"	RECEX	BARE	4,000
MM8134RO37A	8 X 1-3/4"	RECEX	ZINC	4,000
MM8200RO31A	8 X 2"	RECEX	BARE	3,500
MM8200RO37A	8 X 2"	RECEX	ZINC	3,500
MM8214RO31A	8 X 2-1/4"	RECEX	BARE	3,000
MM8214RO37A	8 X 2-1/4"	RECEX	ZINC	3,000
MM8212RO31A	8 X 2-1/2"	RECEX	BARE	2,500
MM8212RO37A	8 X 2-1/2"	RECEX	ZINC	2,500
MM8234RO31A	8 X 2-3/4"	RECEX	BARE	2,000
MM8300RO31A	8 X 3"	RECEX	BARE	1,500



#6 FLAT, LO-ROOT NO NIBS				
CODE	SIZE	DRIVE	FINISH	CASE
MM0612RO37A2	6 X 1/2"	#2 SQUARE	ZINC	15,000
MM51F6RO37C	6 X 5/8"	#1 RECEX	ZINC	15,000
MM0658RO37A2	6 X 5/8"	#2 SQUARE	ZINC	15,000
MM0658RO37A5	6 X 5/8" (#5 HEAD)	#1 SQUARE	ZINC	15,000
MM0634RO37A2	6 X 3/4"	#2 SQUARE	ZINC	15,000
PBFS0006010000	6 X 1"	#2 SQUARE	ZINC	10,000
MM0758RO37AQ	7 X 5/8" TYPE 17	#2 RECEX	ZINC	15,000



FLAT, LO-ROOT WITH NIBS				
CODE	SIZE	DRIVE	FINISH	CASE
PBFS05000508	5 X 5/8"	#1 SQUARE	ZINC	30,000
PBFS06000508	6 X 5/8"	#1 SQUARE	ZINC	15,000
PBFS06010000	6 X 1"	#1 SQUARE	ZINC	10,000
PBFS06010104	6 X 1-1/4"	#1 SQUARE	ZINC	8,000
PBFS06010102	6 X 1-1/2"	#1 SQUARE	ZINC	7,000
PBFS06010304	6 X 1-3/4"	#1 SQUARE	ZINC	5,000
MM51F6CM37M	6 X 1-3/4" (#7 HEAD)	#2 SQUARE	ZINC	5,000
PBFS08000304	8 X 3/4"	#2 SQUARE	ZINC	15,000
PBFS08000708	8 X 7/8"	#2 SQUARE	ZINC	10,000
PBFS08010000	8 X 1"	#2 SQUARE	ZINC	10,000
PBFS08010108	8 X 1-1/8"	#2 SQUARE	ZINC	8,000
PBFS08010104	8 X 1-1/4"	#2 SQUARE	ZINC	7,500
PBFS08010102	8 X 1-1/2"	#2 SQUARE	ZINC	5,500
PBFS08010304	8 X 1-3/4"	#2 SQUARE	ZINC	4,000
PBFS08020000	8 X 2"	#2 SQUARE	ZINC	3,500
PBFS08020102	8 X 2-1/2"	#2 SQUARE	ZINC	2,500
PBFS08030000	8 X 3"	#2 SQUARE	ZINC	1,500
PBFS08030102	8 X 3-1/2"	#2 SQUARE	ZINC	1,000





Each kit contains:
 M140 Hose (12')
 M120 Gun
 Tensor Wrench
 Carabiner



GLUE EXTRA'S	
M120	SPRAY GUN
M125	WAND GUN
M130-12	12FT FLEXIBLE HOSE
M130-25	25FT FLEXIBLE HOSE
M140-25	25FT TEFLON HOSE
M150-12	12FT STAINLESS STEEL HOSE

AEROSOL CITRUS CLEANER	
S101AA	AEROSOL CITRUS CLEANER SOLVENT

CONTACT ADHESIVE																		
CODE	PACKING	HI-TEMP RES.	SPRAY TYPE	LONG BOND TIME	PSA	COLD APP.	WOOD	HPL	HIGH GLOSS	POST FORM	METAL	POLY FOAM	FLEX FOAM, FABRIC	VINYL	RUBBER	PLASTIC	HAPS COMP	CA VOC
P300	22L, 108L, 216L	MILD	WEB	SUG.		YES	HR	HR			R		R					
P302	22L, 108L, 216L	YES	WEB	SUG.		YES	HR	HR			R		R					
P307	22L, 108L, 216L	MILD	WEB	SUG.		YES	HR	HR			R		HR		R	R	YES	YES
P308	22L, 108L, 216L	YES	WEB	SUG.		YES	HR	R			HR	R	HR	R	R	R	YES	YES
P313	22L, 108L, 216L	MILD	PEB.				HR	HR	R	R	R						NO	YES
P323	22L, 108L, 216L	YES	WEB		YES							HR		R	R	R	YES	
P331	22L, 108L, 216L	MILD	WEB									HR		R			YES	
P809	22L, 108L, 216L	YES	WEB				HR	R	HR			R	R	HR	HR	HR		YES
		HR	HIGHLY RECOMMENDED					R	RECOMMENDED				SUG.	SUGGESTED USE				



NUFLEX CAULKING			
MS0540LP34A	300ML WHITE PAINTABLE	MS0531LP15A	300ML CLEAR SILICONE
MS0531LP02A	300ML BLACK SILICONE	MS0531LP34A	300ML WHITE SILICONE

AKFIX CAULKING	
MG100S	310ML CLEAR SILICONE
MG610	310ML POLY URITHANE ADHESIVE



HOT MELT PELLETS AND CARTRIDGES			
EGP210PP38A	NATURAL CARTRIDGE 16KG (180-200°)	EGP600PP38A	NATURAL PELLETS 20KG (180-200°)
EGP280PP15A	CLEAR PELLETS 20KG (180-200°)	EGPHM2200NT25	NATURAL PELLETS 25KG (180-200°)
EGP600PP15A	CLEAR PELLETS 20KG (130-140°)	EGPDR2004WHT	WHITE PELLETS 25KG (180-200°)



PROFESSIONAL FAST ADHESIVE KIT	
MG705-200	200MML AEROSOL & ACTIVATOR
MG705-400	400MML AEROSOL & ACTIVATOR

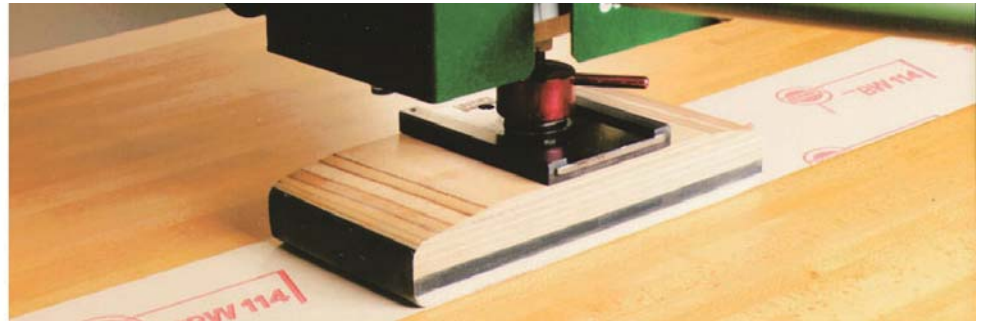


16KG CONTACT CEMENT	
MGS2000-Y	YELLOW CONTACT CEMENT
MGS2000-R	RED CONTACT CEMENT

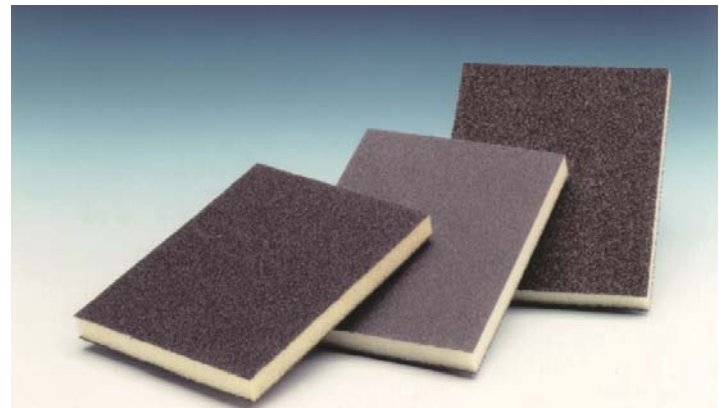
20KG PAIL WOOD GLUE	
MGW9399	WHITE FAST SETTING WOOD GLUE
MGW5023	WHITE GENERAL PURPOSE GLUE



DOUBLE SIDE TAPE	
MGDST1825	18MM X 25MM
MGDST2425	24MM X 25MM



PORTABLE BELTS								
CODE	SIZE	GRIT	CODE	SIZE	GRIT	CODE	SIZE	GRIT
MA0321HR22A	3" X 21"	60	MA0648HR22A	6" X 48"	60	MA6158HR22C	6" X 158"	100
MA0321HR22B	3" X 21"	80	MA0648HR22B	6" X 48"	80	MA6240HR22B	6" X 168"	80
MA0321HR22C	3" X 21"	100	MA0648HR22C	6" X 48"	100	MA6264HR22A	6" X 240"	100
MA0321HR22D	3" X 21"	120	MA0648HR22D	6" X 48"	120	MA6290HR22B	6" X 264"	80
MA0324HR22A	3" X 24"	60	MA0680HR22B	6" X 80"	80	MA6290HR22D	6" X 290"	120
MA0324HR22B	3" X 24"	80	MA0680HR22C	6" X 80"	100	MA6290HR22E	6" X 290"	150
MA0324HR22C	3" X 24"	100	MA0690HR22B	6" X 90"	100	MA6306HR22A	6" X 290"	80
MA0324HR22D	3" X 24"	120	MA6108HR22B	6" X 108"	80	MA6306HR22B	6" X 306"	100
MA0424HR22A	4" X 24"	60	MA6108HR22D	6" X 108"	120	MA6306HR22C	6" X 306"	120
MA0424HR22B	4" X 24"	80	MA6108HR22E	6" X 108"	150	MA6306HR22D	6" X 306"	150
MA0424HR22C	4" X 24"	100	MA6128HR22C	6" X 128"	100	MA6315HR22B	6" X 315"	100
MA0424HR22D	4" X 24"	120	MA6158HR22A	6" X 158"	60	MA6315HR22C	6" X 315"	120
MA0424HR22E	4" X 24"	150	MA6158HR22B	6" X 158"	80			



SANDING SHEETS		
CODE	SIZE	GRIT
MA9060HR22A	9" X 11"	60
MA9080HR22A	9" X 11"	80
MA9100HR22A	9" X 11"	100
MA9120HR22A	9" X 11"	120
MA9150HR22A	9" X 11"	150
MA9180HR22A	9" X 11"	180
MA9220HR22A	9" X 11"	220
MA9280HR22A	9" X 11"	280
MA9320HR22A	9" X 11"	320
MA9400HR22A	9" X 11"	400

SANDING SPONGES			
CODE	SIZE	SIDE	GRIT
MF4555HR22A	4-1/2" X 5-1/2" X 3/16"	1	100
MF4555HR22B	4-1/2" X 5-1/2" X 3/16"	1	180
MF4555HR22C	4-1/2" X 5-1/2" X 3/16"	1	220
MF4556HR22C	3-7/8" X 4-7/8" X 1/2"	2	220
MF4557HR22B	2-3/4" X 4" X 1"	4	100
MF4557HR22C	2-3/4" X 4" X 1"	4	180
MF4557HR22D	2-3/4" X 4" X 1"	4	220

SANDING DISCS				
CODE	DIA.	# OF HOLES	BACKING	GRIT
MA0VC5HR22A	5"	NONE	VELCRO	60
MA0VC5HR22B	5"	NONE	VELCRO	80
MA0VC5HR22C	5"	NONE	VELCRO	100
MA0VC5HR22D	5"	NONE	VELCRO	120
MA0VC5HR22E	5"	NONE	VELCRO	150
MA0VC5HR22F	5"	NONE	VELCRO	180
MA0VC5HR22H	5"	NONE	VELCRO	220
MA0VC5HR22K	5"	NONE	VELCRO	320
MA0VC5HR22L	5"	NONE	VELCRO	400
MA0VC5HR22M	5"	NONE	VELCRO	500
MA5VC5HR22A	5"	5 HOLES	VELCRO	60
MA5VC5HR22B	5"	5 HOLES	VELCRO	80
MA5VC5HR22C	5"	5 HOLES	VELCRO	100
MA5VC5HR22D	5"	5 HOLES	VELCRO	120
MA5VC5HR22E	5"	5 HOLES	VELCRO	150
MA5VC5HR22F	5"	5 HOLES	VELCRO	180
MA5VC5HR22G	5"	5 HOLES	VELCRO	220
MA5VC5HR22K	5"	5 HOLES	VELCRO	320
MA8VC5HR22A	5"	8 HOLES	VELCRO	60
MA8VC5HR22B	5"	8 HOLES	VELCRO	80
MA8VC5HR22C	5"	8 HOLES	VELCRO	100
MA8VC5HR22D	5"	8 HOLES	VELCRO	120
MA8VC5HR22E	5"	8 HOLES	VELCRO	150
MA8VC5HR22F	5"	8 HOLES	VELCRO	180
MA8VC5HR22G	5"	8 HOLES	VELCRO	220
MA8VC5HR22K	5"	8 HOLES	VELCRO	320
MA8VC5HR22L	5"	8 HOLES	VELCRO	400



SANDING DISCS				
CODE	DIA.	# OF HOLES	BACKING	GRIT
MA0VC6HR22A	6"	NONE	VELCRO	60
MA0VC6HR22B	6"	NONE	VELCRO	80
MA0VC6HR22C	6"	NONE	VELCRO	100
MA0VC6HR22D	6"	NONE	VELCRO	120
MA0VC6HR22E	6"	NONE	VELCRO	150
MA0VC6HR22F	6"	NONE	VELCRO	180
MA0VC6HR22G	6"	NONE	VELCRO	220
MA0VC6HR22I	6"	NONE	VELCRO	240
MA0VC6HR22K	6"	NONE	VELCRO	320
MA0VC6HR22L	6"	NONE	VELCRO	400
MA6VC6HR22A	6"	6 HOLES	VELCRO	60
MA6VC6HR22B	6"	6 HOLES	VELCRO	80
MA6VC6HR22C	6"	6 HOLES	VELCRO	100
MA6VC6HR22D	6"	6 HOLES	VELCRO	120
MA6VC6HR22E	6"	6 HOLES	VELCRO	150
MA6VC6HR22F	6"	6 HOLES	VELCRO	180
MA6VC6HR22G	6"	6 HOLES	VELCRO	220



BACKUP PADS FOR SANDERS			
CODE	DIA.	# OF HOLES	BACKING
MA0VP5HR22A	5"	NONE	VELCRO
MA0VP6HR22A	6"	NONE	VELCRO

BACKUP PADS FOR SANDERS			
CODE	SIZE	SIDES	GRIT
MFC135HR22A	4-1/2" X 5-1/2"	1	180
MFC135HR22B	4-1/2" X 5-1/2"	1	240
MFC135HR22D	4-1/2" X 5-1/2"	1	320

ORDERING

- ⇒ Website: www.canmade.com
- ⇒ Phone: T - (800) 668-7636 | L - (905) 738-8886
- ⇒ Fax: (905) 738-0864
- ⇒ Email: cnmdtor@canmade.com
- ⇒ Customer Service is available from 7:30am until 4:30pm Eastern Time
- ⇒ \$25.00 Minimum Order unless purchasing item on back order or Online purchase
- ⇒ Will Call Orders available for pick up from 8:00am until 4:00pm, local warehouse time

The Canmade website allows you to place orders, view item pictures and view catalog's of our Brand Suppliers for additional options.

RETURNS

All requests for returns must be made within 20 days of invoice date. Returns are subject to a 20% restocking fee unless the return is due to Canmade's error or a quality issue.

To request a Return Goods Authorization contact Customer Service.

- ⇒ Phone: T - (800) 668-7636 | L - (905) 738-8886
- ⇒ Fax: (905) 738-0864
- ⇒ Email: cnmdtor@canmade.com
- ⇒ Include the Item Number, Quantity and reason for return when requesting an RGA

Items should be in original packaging and shipped with care to avoid damage. Items received damaged may not be credited.

In the event that the return is due to an error by Canmade, return shipping instructions and cost will be covered by Canmade. Otherwise, shipments are the Customer's responsibility and should be via a method which allows shipment tracking and proof of delivery.

SOURCING

At Canmade we specialize in sourcing new products or products you want to develop. In many cases, we may even have it.

Some special orders require an upfront payment or deposit. Every order request is different.

If you did not see it in our catalog, please ask, as we are confident we can help.

Don't see it?...

Ask us!!!

A Brief Snippet

Canmade is a North American leader in the supply of specialty hardware. We hold our relationships with our suppliers and customers in high esteem which is why we have more than 40 years of experience under our belt.

We started out small, but over the years we have been importing and distributing functional and decorative hardware for the kitchen, bath, office and ready-to-assemble furniture industries. Our inventory currently boasts over 35,000 products including: adhesives, handles and knobs, lighting, slides and hinges, decorative surfaces, and organisation solutions. We are also conveniently located in Toronto, Montréal and will be growing across Canada and the United States.

Essentially, we strive to be the wholesaler you can rely on for all your furniture hardware needs with ease across North America.

What We Value

Relationships
Community
Integrity
Loyalty
Knowledge
Quality
Style

Mission

Our mission is to build lasting relationships with our customers by offering sound and helpful advice, reliable service, great prices, alternatives and easy order processing.

Vision

We strive to be the heart and soul of the woodworking, renovation, interior design, and furniture design industries by helping small and mid-sized businesses grow and flourish through our mode of services and pricing. Our vision is to become the leading North American organization in our industry for customer service, advice, reliability, affordability and options.

